

## 2002 Mainship PILOT 30 EXPRESS \$79,000



If you are in the market for a PILOT 30, look no further. Her condition is very good and the boat runs smoother and quieter than any other PILOT 30 we have marketed—and we know these boats. *Sequel* comes with the sport package, including bow thruster, internal sea strainers, dripless shaft log, oil x-changer. It also has a swim platform, interior teak package, microwave, two burner propane stove, radar arch, bimini and enclosure, helm cover, color radar/chartplotter, GPS 120 WAAS, Ray 53VHF with DSC, ST60, battery monitor, St. Croix Davits, dome lights and cockpit lights. Recent bottom paint, new zincs, two new starting batteries and Speedseal installed on the raw water pump to make impeller changes fast. This beautiful boat also comes with an inverter with 2 golf cart batteries, lounge seat backrests and has pilot seat arm rests. She is well equipped and truly in exceptional condition from the new cockpit carpets to the nicely maintained canvas and eisenglass. Call for an appointment today. Recent price reduction.

### BASIC INFORMATION

<b>Manufacturer:</b>	Mainship	<b>Model:</b>	PILOT 30 EXPRESS
<b>Year:</b>	2002	<b>Category:</b>	Power
<b>Condition:</b>	Used	<b>Location:</b>	South Portland, US
<b>Vessel Name:</b>	Sequel	<b>Hull Material:</b>	Fiberglass

### DIMENSIONS & WEIGHT

<b>Length:</b>	30 ft	<b>Beam:</b>	10.25 ft
<b>Draft - max:</b>	2.92 ft		

### ENGINE

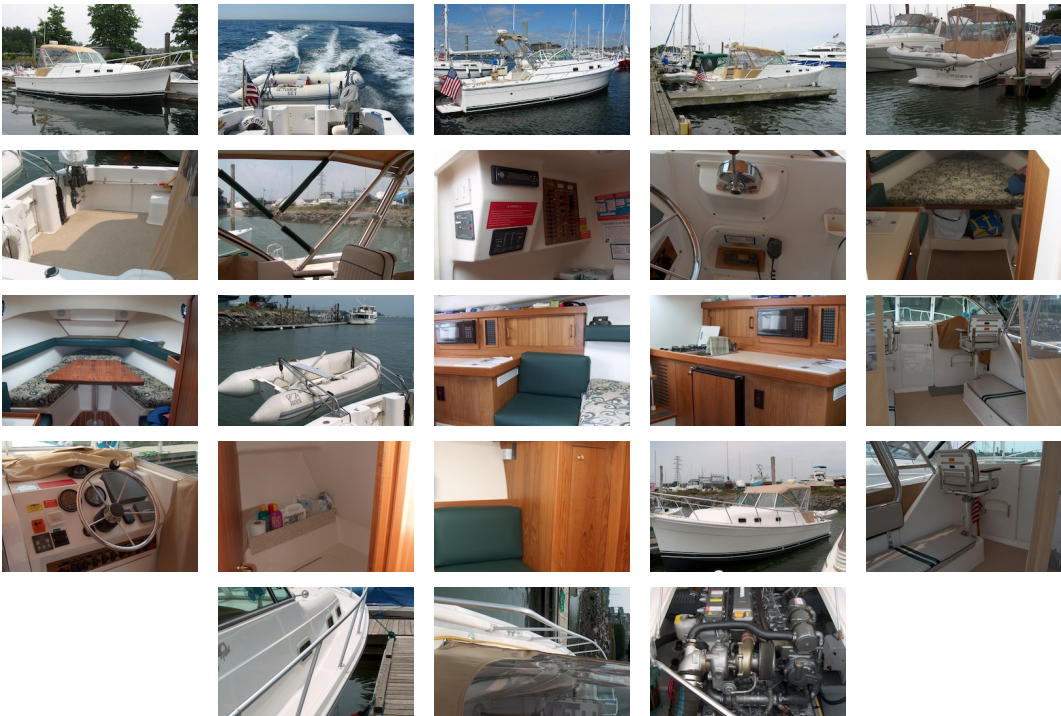
<b>Make:</b>	Yanmar	<b>Model:</b>	4LHA-STP
--------------	--------	---------------	----------

**Engine(s):** 1 **Hours:** 400  
**Fuel Type:** diesel

### TANK CAPACITIES

**Fuel Tank:** 175 gallon - 1 tank(s) **Fresh Water Tank:** 40 gallon - 1 tank(s)  
**Holding Tank:** 30 gallon - 1 tank(s)

### ACCOMODATIONS



**Dimensions** Displacement: 10,000

**Engines** Total Power: 240

#### Accommodations

- Full galley
- Enclosed head
- V-berth with storage
- Convertible dinette
- Double seat helm chairs -captain & mate
- Open cockpit with bench seating
- Full electronics

#### Galley/Head

- Head
- Enclosed head with shower
- Holding tank
- Shower sump pump
- Single bowl sink with vanity storage
- Galley

- AC/DC refrigerator/freezer
- Microwave
- Stainless steel sink
- Ample galley storage

#### **Electronics**

- Raymarine RL70C 7" color chartplotter/radar
- ST60 depth
- Bronze thru-hull transducer
- Ray 53 VHF radio w/ 8ft. antenna
- Raystar 120 WAAS/GPS receiver
- Heading sensor for radar/chart overlay

#### **Additional Equipment**

- St. Croix davits
- Inverter
- Custom radar arch
- Bimini top w/ 3-sided enclosure
- Internal sea strainers
- Dripless shaft log

**Comments** Owners change of plans makes this clean, well equipped Pilot 30 available for immediate delivery.

**Disclaimer** This company offers the details of this vessel in good faith but cannot guarantee or warrant the accuracy of this information nor warrant the condition of the vessel. A buyer should instruct his agents, or his surveyors, to investigate such details as the buyer desires validated. This vessel is offered subject to prior sale, price change, or withdrawal without notice.

PRESENTED BY

**CHRISTOPHER DIMILLO**

CELL 207-671-3292

OFFICE 207-773-7632 x249

chris@dimillos.com

