

How to open a saved document



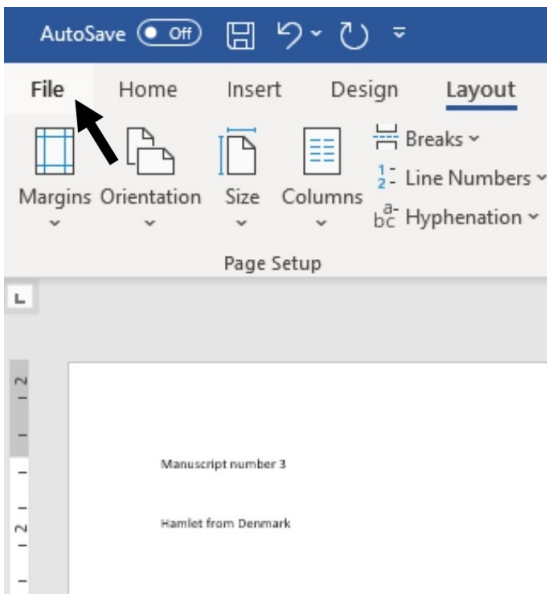
Once you've saved a document, you may want to access it again to make changes or print it out. This guide explains how to open a saved document in Microsoft Word Office 365. Some steps may be different in earlier versions of Word, but similar in concept.

You'll need:

- A computer with Microsoft Word installed

Follow this step-by-step instructions to open a saved document

Step 1: If you already have Microsoft Word opened, click **File** in the upper left-hand corner of the screen.



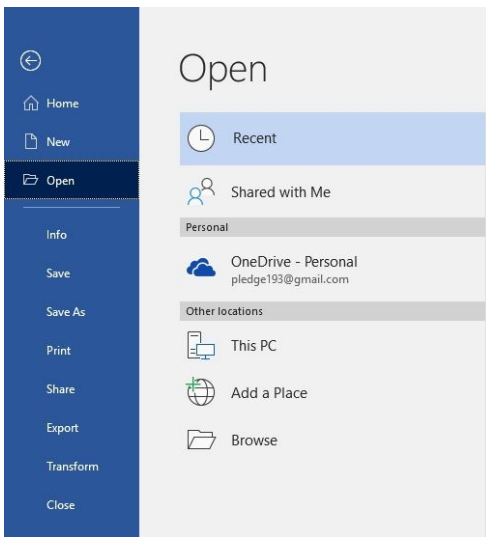
Step 2: Click **Open**.

We use cookies on this site to enhance your user experience

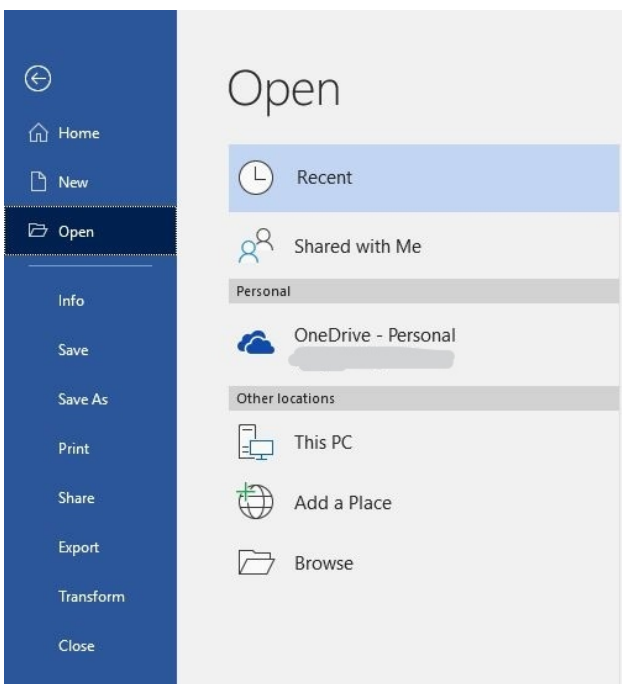
By clicking any link on this page you are giving your consent for us to set cookies. [More info](#)

OK, I agree

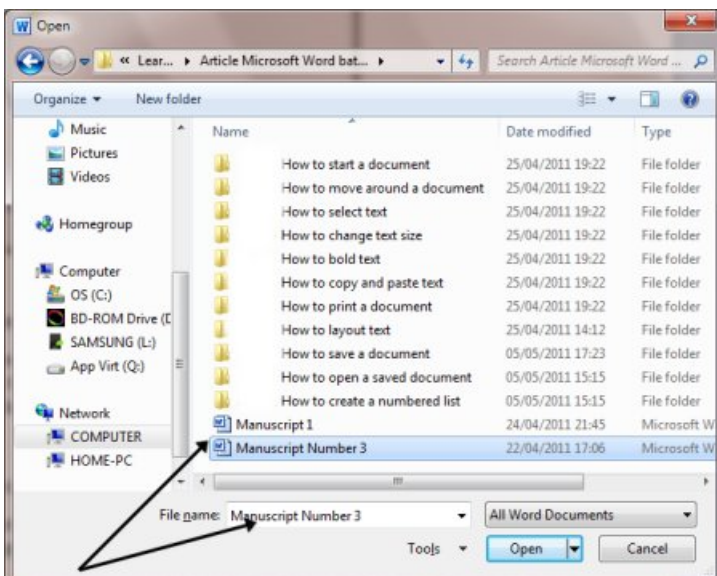
No, thanks



Step 3: An 'Open' dialogue box will pop up. From this, find your way to the folder in which your document is saved. Folders that are on your computer can be located by clicking **Browse**.



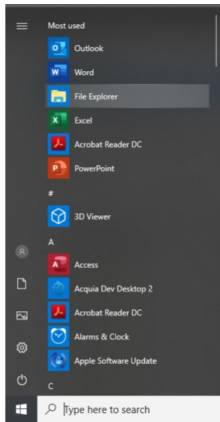
Step 4: Once you've located your document and clicked on it to select it, its name will be shown in the 'File name' box at the bottom of the dialogue box.



Step 5: Click Open.

The document will then be opened.

Step 6: You can also open a document by navigating through the 'Start' menu. Click **Start**. From the menu that now appears, choose **File Explorer**. Navigate to find the document you're looking for through your folders and files. Double-click on the name of the document you want to open.



Last updated 3rd July 2019.

Next steps

[How to create a new Word document](#)

[How to save a document](#)

[How to email a document](#)

[Email safety tips](#)
