

2003 Eastbay Hardtop Express Cruiser **\$337,000**



New listing and nice example of the popular Eastbay 38. She offers a full complement of equipment and navigation gear, fully cleaned, detailed and ready to cruise. Highlights include upgraded CAT 3126B electronic engines, low hours, under extended warranties, new Awlgrip flag blue paint, recent upholstery and aft enclosure, bowthruster and the island queen forward. Recent survey available, and ready for new owners. Late model, quality trades considered. 750 hrs on Cat 3126Bs with extended warranties.

BASIC INFORMATION

Manufacturer:	Eastbay	Model:	Hardtop Express Cruiser
Year:	2003	Category:	Power
Condition:	Used	Location:	en route to Northeast, US
Hull Material:	Fiberglass	Designer:	American Marine/Grand Banks

DIMENSIONS & WEIGHT

Length:	38 ft
----------------	-------

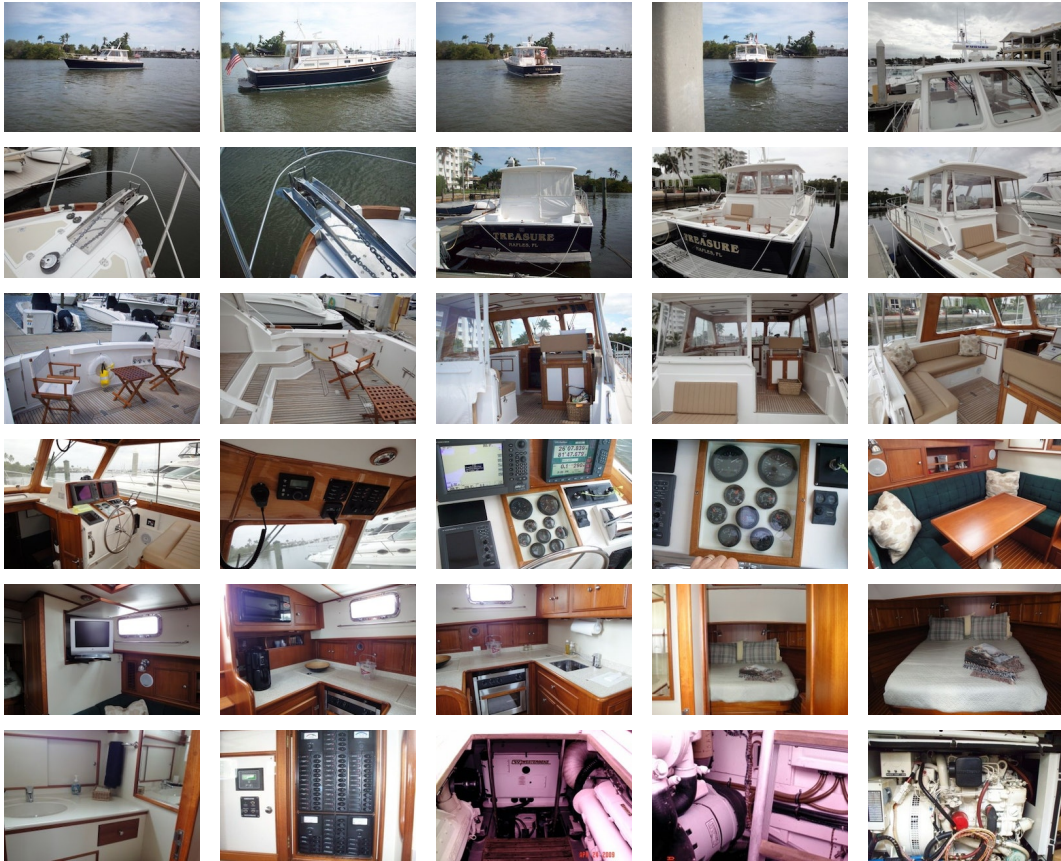
ENGINE

Make:	Caterpillar	Model:	3126
Engine(s):	2	Hours:	792
Fuel Type:	diesel		

TANK CAPACITIES

Fuel Tank: - tank(s) **Fresh Water Tank:** - tank(s)
Holding Tank: - tank(s)

ACCOMODATIONS



Dimensions Length at Waterline: 34' 7.8" Beam: 13' 2" Max Draft: 2' 7"

Engines Total Power: 450 Cruising Speed: 24 Max Speed: 29

Tanks Fuel: 344 Fresh Water: 95 Holding: 40

Accommodations

- Main Salon
- Settee, U-shaped, upholstered in Ultra Suede
- Table, Hi-Lo, teak
- Recessed bookshelves
- Hanging locker with cedar lined paneling
- Reading lamps, chrome plated
- Master Stateroom
- Island berth
- Drawers and overhead lockers
- Hanging locker with cedar lined paneling
- Beveled mirror, with teak frame

Galley/Head

- Galley
- Countertop, Corian
- Norcold Refrigerator/freezer, 12V DC/120V AC
- Sink, polished double stainless
- Force 10 3-burner propane stove/oven
- Sharp Micro-Convection oven in overhead cabinet
- Seagull water filter
- Corner reach-in adjustable refrigerator or freezer
- Head
- Sealand Vacuflush toilet
- Corian counter
- Sink
- Abundant cabinet storage
- Combined shower

Hull and Deck

- Helm Deck
- Chart locker, teak
- Compass
- Decking, teak, epoxy bonded, helm deck, cockpit and side and fore decks
- Electronic console, FRP with teak
- Electronic overhead locker, teak
- Engine room access hatch, hinged with gas strut and gaskets
- Double Helmseat
- L-Settee
- Helm deck air conditioned
- Canvas covers: Bridgedeck window covers, bridgedeck aft enclosure
- Forward Deck
- Fresh & salt water wash downs in anchor locker
- Maxwell bi-directional with remotes
- 22 kg polished stainless steel plow type anchor with 30 feet of 5/16 inch chain and 150 feet of inch nylon rode
- Aft Deck
- Transom Door
- Two cockpit coaming flush mounted rod holders
- Teak swim platform with folding stainless steel swim ladder
- Teak cockpit sole
- Hatches, teak, hinged w/gas cylinder lift-ups
- Scuppers, stainless steel
- Seat/storage box
- Glendinning Cablemaster shore cable manager
- Smart Rail spray rail system

Electronics/Entertainment

- Icom IC-M422
- Simrad AP26
- Furuno Navnet Radar and Plotter
- Furuno FCV-582L color video fishfinder/knotlog/sea temperature instrument
- ACR 406 Satellite 2 EPIRB
- Northstar 6000i combination GPS/color electronic chart plotter
- Simrad Autopilot
- Clarion XMD1 AM/FM/CD stereo
- Zenith LCD television in Salon

Mechanical Systems

- Twin Caterpillar 3126 B 450 HP diesel engines
- Caterpillar engine synchronizer
- Westerbeke 7.6KW Generator
- Marine Air reverse cycle A/C unit 16k BTU w/remote air handler
- Marine Air reverse cycle A/C unit 16kBTU w/remote air handler for helm deck
- Crossover fuel filter system for twin engines (Racor)
- Oil change System for engine/generator
- Glendinning Cablemaster (auto retractable 50 amp power cord)
- Vetus bow thruster
- Spurs line cutters on propeller shafts
- Engine Alarm Systems

Additional Equipment

- Reverse Cycle Heat and AC at the helm deck and below
- Glendinning Synchronizer

- Glendenning Cablemaster
- Raw Water Washdown
- Cockpit Hot and Cold Shower
- Maxwell Windlass
- Two fireboy/Xintrex CMD3 carbon monoxide detector
- Three 12-volt DC windshield wipers with washers
- Computank fuel and water monitoring system with alarms
- Tank Watch MSD waste tank monitor

Disclaimer The Company offers the details of this vessel in good faith but cannot guarantee or warrant the accuracy of this information nor warrant the condition of the vessel. A buyer should instruct his agents, or his surveyors, to investigate such details as the buyer desires validated. This vessel is offered subject to prior sale, price change, or withdrawal without notice.

PRESENTED BY

CHRISTOPHER DIMILLO

CELL 207-671-3292

OFFICE 207-773-7632 x249

chris@dimillos.com

