

1999 Formula 41 PC **\$199,900**



New listing, this 1999 41' Formula 41 PC is powered by the upgraded twin Cummins 450hp diesels (only 326 hours). Her equipment list was recently improved with the addition of new electronics and new canvas. Other features include air conditioning with reverse cycle heat, generator, full galley, head with separate shower stall and more. Her owner has many years on the ocean and understands the importance of proper annual maintenance. She is currently stored (heated) indoors for the winter with access to be seen at your convenience. Please call ahead for showing instructions.

BASIC INFORMATION

Manufacturer:	Formula	Model:	41 PC
Year:	1999	Category:	Power
Condition:	Used	Location:	Rockland, US
Vessel Name:	1999 Formula 41 PC	Hull Material:	Fiberglass

DIMENSIONS & WEIGHT

Length:	41 ft	Beam:	13.5 ft
Draft - max:	2.75 ft		

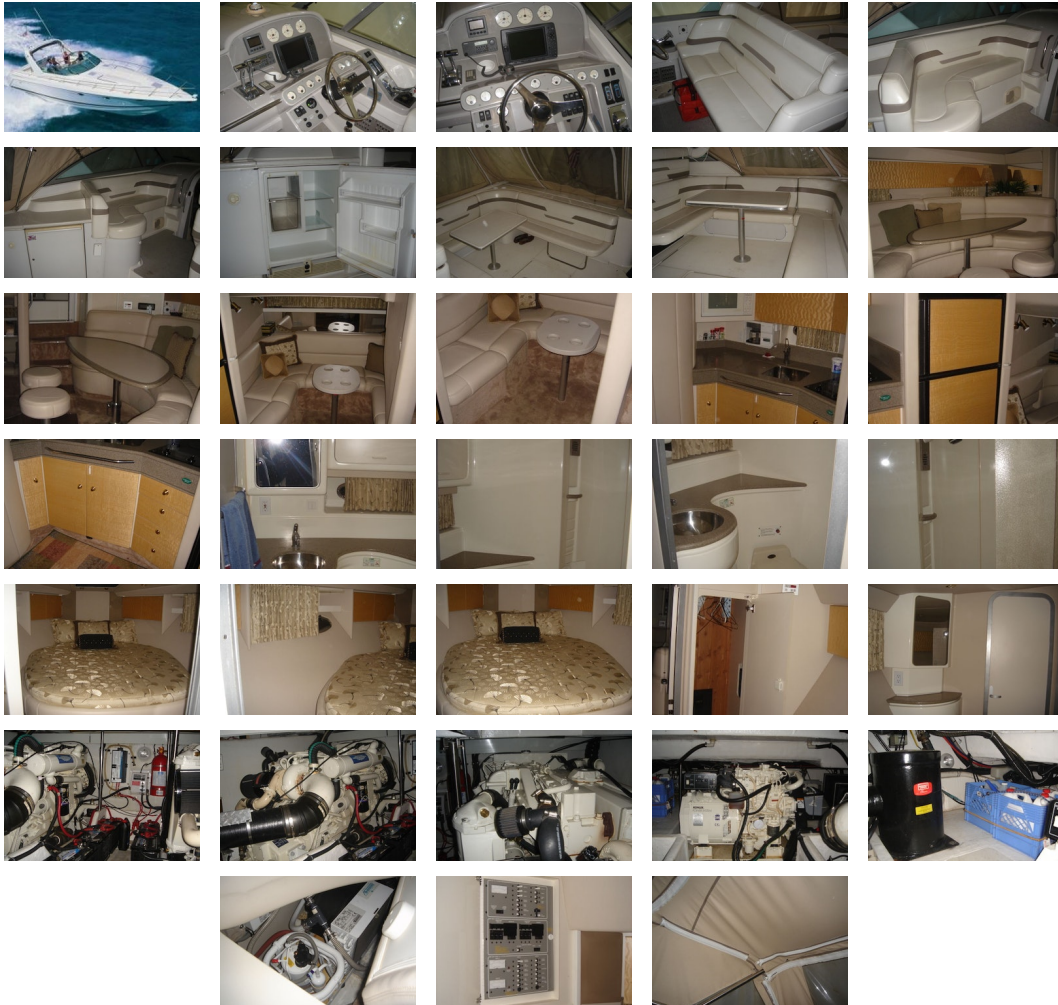
ENGINE

Make:	Cummins	Model:	6CTA8.3-M-3
Engine(s):	2	Hours:	326
Cruise Speed:	25 kn	Fuel Type:	diesel
Max Speed:	31 kn		

TANK CAPACITIES

Fuel Tank:	350 gallon - 1 tank(s)	Fresh Water Tank:	81 gallon - 1 tank(s)
Holding Tank:	40 gallon - 1 tank(s)		

ACCOMODATIONS



Engines Total Power: 450hp

Accommodations The 41 is a big boat inside & out, and a long foredeck and shapely profile make her a stand-out in any marina. Her mid-cabin accommodations are impressive indeed with staterooms fore and aft and a long salon with room for a crowd. There is a separate stall shower in the double-entry head, a big galley with plenty of counter space, excellent storage, and a walk-around island berth in the forward stateroom. Outside, the cockpit is arranged with a double-wide seat at the helm and a U-shaped settee aft that converts into a huge sun pad. The lounge seat opposite the helm can be raised hydraulically to expose a big storage compartment below. A walk-thru in the windshield provides access to the foredeck, and hydraulic rams lift the entire cockpit sole for engine access. Running on a deep-V hull with prop pockets, the upgraded twin Cummins 450hp diesels will cruise her at 25 knots and 31 knots at wide open throttle

Galley/Head

- Galley
- NORCOLD refrigerator/freezer
- SHARP convection oven
- KENYON electric 2-burner stove top
- BLACK & DECKER Space-Maker coffee maker
- Stainless steel dual sink
- Above & below counter storage cabinets

- Hot/cold pressure water with sink
- Opening port outboard and hatch above for great ventilation
- Head
- Double-entry head access
- Separate shower stall
- Vacuflush head system
- Holding tank
- Macerator
- Deck pump-out

Electronics

- GARMIN 3010C GPSMAP chartplotter/radar 10.4" color screen
- GARMIN GMR 41 radar scanner
- RAYTHEON Ray 210 VHF radio
- 8ft. VHF antenna
- RAYTHEON Raydata depth finder

Electrical

- KOHLER 9.0kW generator (51.1 hours)
- 50A shore power service
- AC battery charger
- AC/DC electrical panel
- 12V bilge pumps (3) with auto/manual switches
- (5) DEKA DC31DT Group 31 12V batteries - house/start
- (1) DEKA DC24 Group 24 12V battery - genset

Additional Equipment

- MARINE AIR 2-zone air conditioning with reverse cycle heat
- Windlass
- U-LINE refrigerator with ice-maker (cockpit)
- Bimini-top with 3-sided enclosure and camper back (new 2005)
- Hot water heater (new 2005)
- QUASAR 19" Color TV/VCR
- KENWOOD 10 disc CD with amplifier
- Swim platform with swim ladder
- Transom hot/cold shower
- Formula radar arch
- BENNETT Trim tabs
- WALKER Airseps
- Dripless shaft logs
- Oil changing system
- VDO engine synchronizer
- ACR searchlight with remote at helm

Comments Currently stored inside heated storage with access for boarding. Please call ahead for showing instructions.

More photos available on a CD, please call for details.

Disclaimer The Company offers the details of this vessel in good faith but cannot guarantee or warrant the accuracy of this information nor warrant the condition of the vessel. A buyer should instruct his agents, or his surveyors, to investigate such details as the buyer desires validated. This vessel is offered subject to prior sale, price change, or withdrawal without notice.

PRESENTED BY

PETER OUELLETTE

CELL 207-318-0626

OFFICE 207-773-7632 x285

peter@dimillos.com

