

2001 Ocean 43 Super Sport **\$299,000**



Only 230 hours and it shows! Freshly serviced this spring, this immaculate two head, two stateroom sedan offers the best in equipment and condition. With the Yanmar 465 package, she has the right power, with a conservative 26 knot cruise, a cockpit big enough for the most serious fisherman and the interior accommodations for extensive cruising. I have know the boat since new, and it has always had the best of care, including heated indoor storage this past season, new light blue bottom paint, conversion of the head system to offer a fresh and salt water option, all caulking pulled out and recaulked, all systems serviced and a fresh detail and wax. Call today for an appointment, she won't disappoint you.

BASIC INFORMATION

Manufacturer:	Ocean	Model:	43 Super Sport
Year:	2001	Category:	Power
Condition:	Used	Location:	Sea Bright, US
Vessel Name:	No Name	Hull Material:	Fiberglass

DIMENSIONS & WEIGHT

Length:	43 ft	Beam:	15.17 ft
Draft - max:	3.58 ft	Bridge Clearance:	15.42 ft

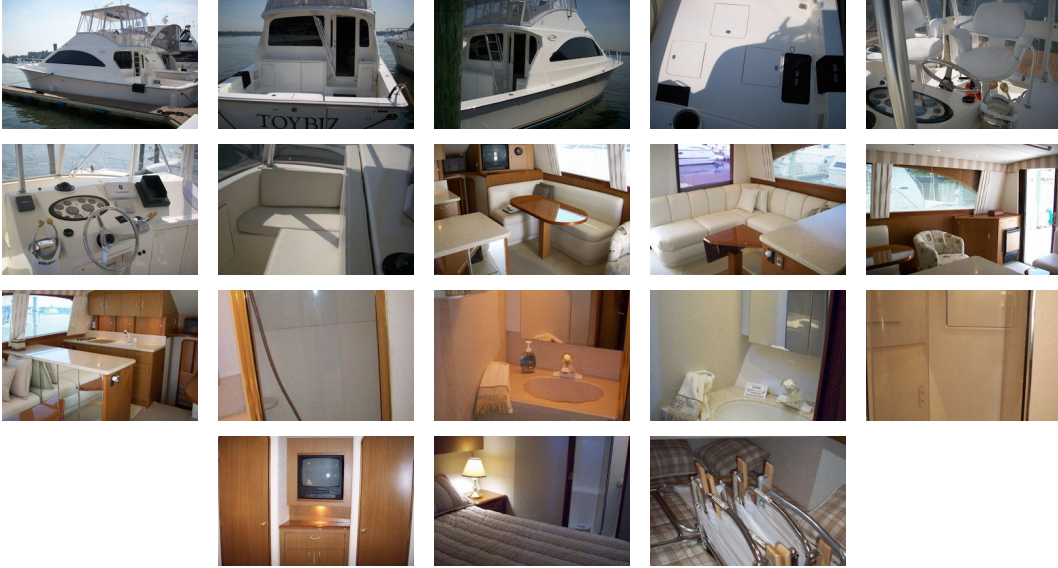
ENGINE

Make:	Yanmar	Model:	6CXH-GTE
Engine(s):	2	Hours:	180
Fuel Type:	diesel		

TANK CAPACITIES

Fuel Tank:	- tank(s)	Fresh Water Tank:	- tank(s)
Holding Tank:	- tank(s)		

ACCOMODATIONS



Dimensions Displacement: 37000

Engines Total Power: 465 hp Cruising Speed: 26+ knots Max Speed: 30+ knots

Tanks Fuel: 450 Fresh Water: 94 Holding: 55

Accommodations Entering the cabin through a starboard offset door, you find a credenza with ice maker and main distribution panel. Forward is a barrel chair then ultraleather upholstered dinette with a high gloss teak table. To port is a well equipped, u shaped galley and aft is a large ultraleather L shaped sofa. There is easy access storage below all the cushions. Down three steps is a guest room to port, guest head to starboard and a master suite forward with a private head in the forepeak. The flybridge offers twin helm seats and a forward bench seat.

- Storage under sofa and dinette
- Convertible bed under sofa
- Pump room under salon sole with equipment and storage
- Entertainment Center with TV, VCR, Multi Disk CD Player and Speakers
- Tinted Windows
- Blinds
- Hi gloss coffee table with folding leaf

Galley/Head

- Head
- (2) Heads with Electric Toilets
- Private Master Head
- Private Guest Head
- Corian Counters with Molded Sinks
- Combination washer/dryer in guest
- Galley
- Corian Counters
- High Gloss Teak Finish
- 2 Burner Electric Cooktop
- Under Counter Refrigerator

- Under Counter Freezer
- Instant Hot Water
- Trash Receptacle
- Exceptional Storage in 4 under counter cabinets and 7 over counter

Electronics

- Simrad AP11 Autopilot
- Furuno Chartplotter
- Raytheon ST60 Depth
- Standard Horizon VHF
- Furuno 48 Mile Radar
- 4' Open Array Scanner

Electrical

- 8.0 kW Westerbeke Generator
- 50A/250V Shorepower with Glendenning Cablemaster Cord Reel
- 60AMP Battery Charger Converter
- Grounding System
- 12V DC Ships Power
- 4 Deep Cycle Batteries
- 12V/110V Panels with Breakers

Hull/Deck

- Bow Pulpit with Anchor Roller
- One Piece Bow Rails with Integrated Burgee mast
- Three overhead hatches
- Six Opening Ports
- Fiberglass Covering boards
- Grab Rails
- Cockpit Access to Engine Room
- Transom Door
- Baitwell
- Live Well
- Cockpit Steps

Additional Equipment

- Factory Hardtop with EZ2CY Enclosure forward
- Strataglass aft and side enclosure
- Ice Maker
- Oil X Change System
- Racor Water/Fuel Separators
- Tackle and Bati Prep Center
- Top Load Freezer
- Live & Bait Well
- Transom Door with Gate
- Fish Box
- Danforth S1600 Anchor with chain and rode
- Lewmar 12V Windlass
- Dual Trumpet Electric Horn
- Fresh Water Washdown
- Raw Water Washdown
- Tackle Center
- Fresh Water Fawcett in Engine Space
- 110V Outlet in Engine Space
- 4 Rod Holders
- Windlass
- 2 Zone Heat and Air Conditioning
- Glendenning Engine Synchronizers
- TV/VCRS in Main Salon and Master Stateroom
- CD Player in Main Salon
- Washer/Dryer
- Water Tank Monitor
- Holding Tank Level
- Danforth Compass
- Prop Shaft Rope Cutters
- Trim Tabs

Comments This exceptionally clean and well maintained 43' Super Sport is a must see. Low hours and diligent maintenance, along with a two stateroom, two head layout offer the best of both worlds for cruising and fishing.

Disclaimer DiMillo's Old Port Yacht Sales offers the details of this vessel in good faith but cannot guarantee or warrant the accuracy of this information nor warrant the condition of the vessel. A buyer should instruct his agents, or his surveyors, to investigate such details as the buyer desires validated. This vessel is offered subject to prior sale, price change, or withdrawal without notice.

PRESENTED BY

CHRISTOPHER DIMILLO

CELL 207-671-3292

OFFICE 207-773-7632 x249

chris@dimillos.com

