

## 2007 Sabre 42 Hardtop Express **\$449,000**



NEW TO THE MARKET, May 29.

A fantastic opportunity to own an outstanding Sabre 42 Hardtop Express. This yacht is distinguished from the crowd by its premium equipment and exceptional maintenance.

October Sky offers the finest engine package available in the 42, twin Cummins 500 hp engines. They are electronically controlled, employing common rail technology to provide smooth, quiet, reliable and smoke-free power, and are monitored by Smart Craft digital displays. A transferable Cummins extended warranty through April 2014 is also in place.

The extensive equipment list includes bow and stern thrusters, blue underwater LED lights, triple Kahlenberg air horns, KVH satellite TV, SiriusXM Radio and Weather, a dinghy lift, custom bedding and fabric package, an alarm system and covers for almost everything!

Exceptional maintenance is documented by meticulous owner records. The brightwork gleams with coats of AwlSpar varnish and AlwBrite clear urethane, and the engine room is detailed.

A visit to October Sky is worth your time if you are in the market for an exceptional downeast yacht in impeccable condition. In fact, you will be delighted.

This office sold the boat originally and is very familiar with its history and its care. Call to get full details.

### BASIC INFORMATION

<b>Manufacturer:</b>	Sabre	<b>Model:</b>	42 Hardtop Express
<b>Year:</b>	2007	<b>Category:</b>	Power
<b>Condition:</b>	Used	<b>Location:</b>	Portsmouth, US
<b>Vessel Name:</b>	October Sky	<b>Hull Material:</b>	Fiberglass

### DIMENSIONS & WEIGHT

---

<b>Length:</b>	42 ft	<b>Beam:</b>	14.33 ft
<b>Draft - max:</b>	3.75 ft	<b>Bridge Clearance:</b>	13.25 ft

---

### ENGINE

---

<b>Make:</b>	Cummins	<b>Model:</b>	QSC8.3
<b>Engine(s):</b>	2	<b>Hours:</b>	640
<b>Cruise Speed:</b>	28 kn	<b>Engine Type:</b>	Inboard
<b>Drive Type:</b>	Direct	<b>Fuel Type:</b>	diesel
<b>Horsepower:</b>	500 horsepower	<b>Max Speed:</b>	31 kn

---

### TANK CAPACITIES

---

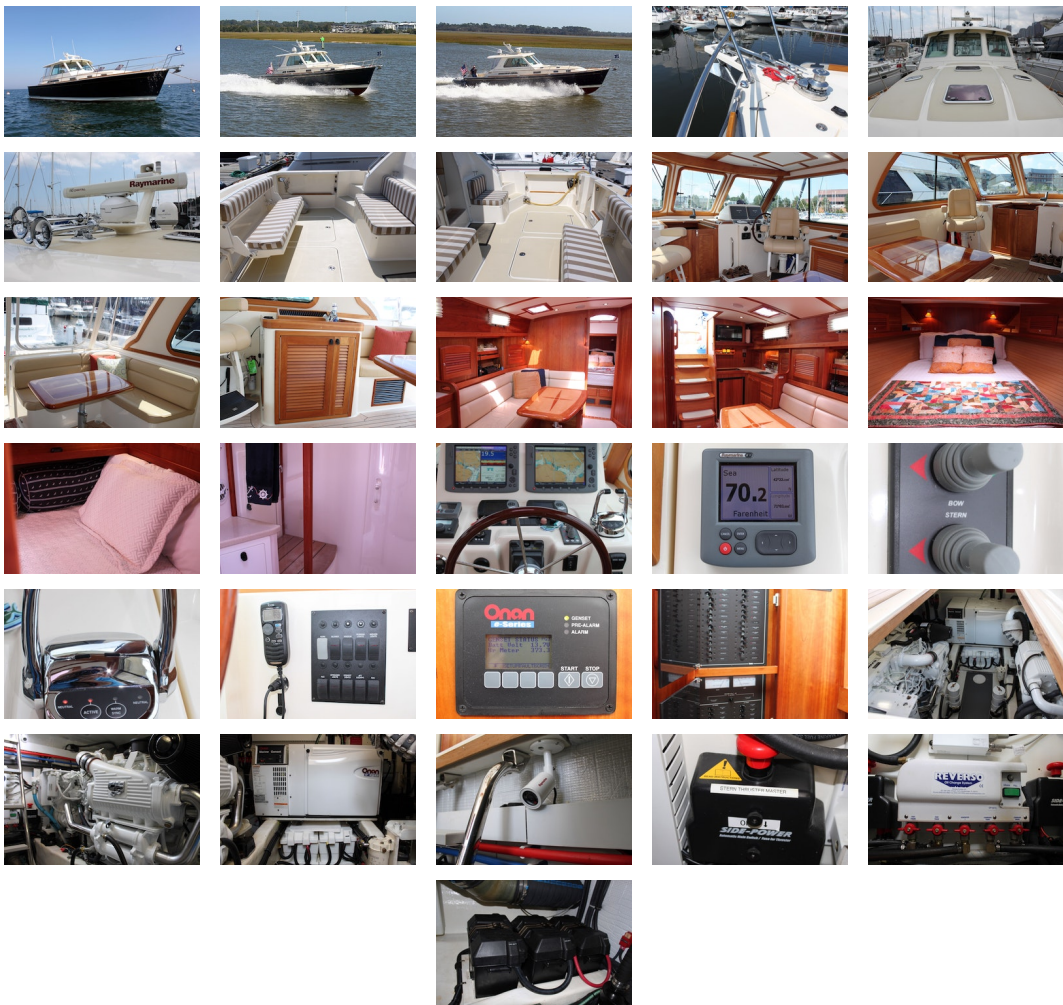
<b>Fuel Tank:</b>	450 gallon - 1 tank(s)	<b>Fresh Water Tank:</b>	160 gallon - 1 tank(s)
<b>Holding Tank:</b>	60 gallon - 1 tank(s)		

---

### ACCOMODATIONS

---

<b>Total Cabins:</b>	2	<b>Total Heads:</b>	1
----------------------	---	---------------------	---



## **Accommodations**

### **Salon**

L-shaped dinette with ultra suede settee  
Hi-Lo cherry table with maple in-lay  
Sharp 20" flat screen TV in custom cherry enclosure  
Sabre tool drawer

### **Master Stateroom**

Centerline island queen berth  
Under berth storage  
Private door to head  
Cedar lined hanging locker  
Teak & holly sole

### **Guest Stateroom**

Double slide-out berth  
Ample storage  
Teak & holly sole

### **Galley**

Corian counter tops  
AC/DC refrigerator/freezer  
Two burner electric stovetop  
Combination microwave/convection oven  
Seagull IV water purification system  
Spice rack

### **Helm Deck**

Two Stidd series 500 helm seats  
Corian wet bar with U-Line ice maker  
Seagull IV water purification system  
L-Shaped settee  
Cherry in-laid table  
Teak decks

### **Head**

Separate circular shower stall with teak seat  
Jabsco Quiet Flush electric fresh water toilet  
Corian vanity top  
Holding tank gauge

Teak towel racks

### **Cockpit**

Sunbrella cushion fabric

Spare vinyl cushions

Transom mounted folding seat

Hot and cold transom shower

### **Machinery, Propulsion and Control**

Twin Cummins QSC8.3 500HP diesel engines with common rail technology

Cummins extended warranty through April 2014

Cummins electronic throttle controls

Walker Airseps

Sidepower bow and stern thrusters with dual joystick control

Hydraulic steering

Twin bronze rudders

Twin Bennett trim tabs with dual actuators

2"Aquamet stainless steel shafts

PSS drip-less shaft seals

4-blade NiBrAl propellers to ISO Class S standards

Groco engine intake strainers

Sea water cooled exhaust system with in-line mufflers and side exhaust outlets

Racor fuel/water separators with water in fuel alarms

Twin Smart Craft displays

### **Electrical**

#### **12VDC System**

Maintenance free group 31, dedicated, lead acid, engine start batteries (3)

Maintenance free 8D, Lifeline AGM, deep cycle ships batteries (2)

Maintenance free dedicated lead acid generator start battery (1)

Battery disconnect and emergency crossover switches in engine room

Bass Illuminated main circuit breaker distribution panel

12-V lighting system with Cantalupi Jeny overhead lights and Danish Cabin reading lights

Cockpit courtesy lights

Navigation lights: side, streaming, stern and 360 degree anchor light

Marinco Sealink 12-VDC outlet at helm

Tinned wire throughout

#### **110VAC Service**

Glendinning 50 Amp shorepower inlet and 50 ft. cord

120-VAC outlets in each cabin and engine room. Galley, head, and engine room are all GFI protected.

Dimmer switches on helm deck, salon, and master stateroom

50 Amp, 3-bank battery charger

Onan 11.5 KW Generator with digital remote control, water lift muffler, intake strainer, and sound shield

### **Navigation and Instrumentation**

Two Raymarine E120 multi-function displays

Raymarine ST70 display

Raymarine HD digital open array radar

Raymarine DSM 300 digital sounder

Simrad AP26 autopilot

Two Cummins Smartcraft digital displays

ICOM M504 VHF with remote control microphone and external hailing speaker

ACR remote control searchlight

Raymarine SR100 marine weather receiver

Raymarine AIS transceiver

Raymarine CAM100 camera mounted in engine room (display on E120)

### **Entertainment**

TracVision M3 satellite

Satellite wiring to salon mounted 20" TV with extra wiring to master stateroom and helm deck

Extra TV for portable use in master stateroom or helm deck

Clarion M455A Sirius radio receiver and antenna

DVD player

### **Additional Equipment**

Glendinning Cablemaster shore power cable system

Ocean LED blue underwater transom lights

Lewmar windless for Suncor stainless steel anchor and all chain rode

Spurs shaft cutters

Fresh and salt water washdowns fore and aft

Climate control in helm deck, salon, and master stateroom (3 systems)

Power operated center window

Reverso oil change system

DinghyRamp removable swim platform mounted dinghy lift and launch system

9' Zodiac with 4 hp Yamaha included

Revere 4-Person life Raft in Valise

Revere Coastal Compact Life Raft

Custom carpet runners in salon, staterooms, and on companionway stairs

Custom covers for cockpit seating, flag pole, burgee, Stidd seats, helm instruments, and helm deck table

Custom cover for entire cockpit area

Custom maintenance over-covers to protect carpet runners and teak helm deck

Custom window covers

Custom bedspreads and linens

Accord port shades

**Safety Equipment**

Paradox alarm system with helm motion detector and instrumentation tamper alarm

Telular modem for automatic security alerts to your phone

Two remote alarm on/off remote controls

Xintex Fireboy automatic fire extinguishing system

**Disclaimer** The Company offers the details of this vessel in good faith but cannot guarantee or warrant the accuracy of this information nor warrant the condition of the vessel. A buyer should instruct his agents, or his surveyors, to investigate such details as the buyer desires validated. This vessel is offered subject to prior sale, price change, or withdrawal without notice.

PRESENTED BY

**CHRISTOPHER DIMILLO**

CELL 207-671-3292

OFFICE 207-773-7632 x249

chris@dimillos.com

