

2006 Back Cove 26 \$99,000



2006 Back cove 26!

This one owner boat has just hit the market for the first time, stored indoor heated storage since new

- Claret red Awlgrip hull
- Bow thruster
- Raymarine electronics, C80 Gps/ Radar/ depth
- Yanmar 240 with 225hrs

BASIC INFORMATION

Manufacturer:	Back Cove	Model:	26
Year:	2006	Category:	Power
Condition:	Used	Location:	Freeport, US
Vessel Name:	Back Cove 26	Hull Material:	Fiberglass

DIMENSIONS & WEIGHT

Length:	26 ft	Beam:	9.33 ft
Draft - max:	2.5 ft	Bridge Clearance:	9.92 ft
Dry Weight:	8,500 lb		

ENGINE

Make:	Yanmar	Model:	LH
Engine(s):	1	Hours:	225

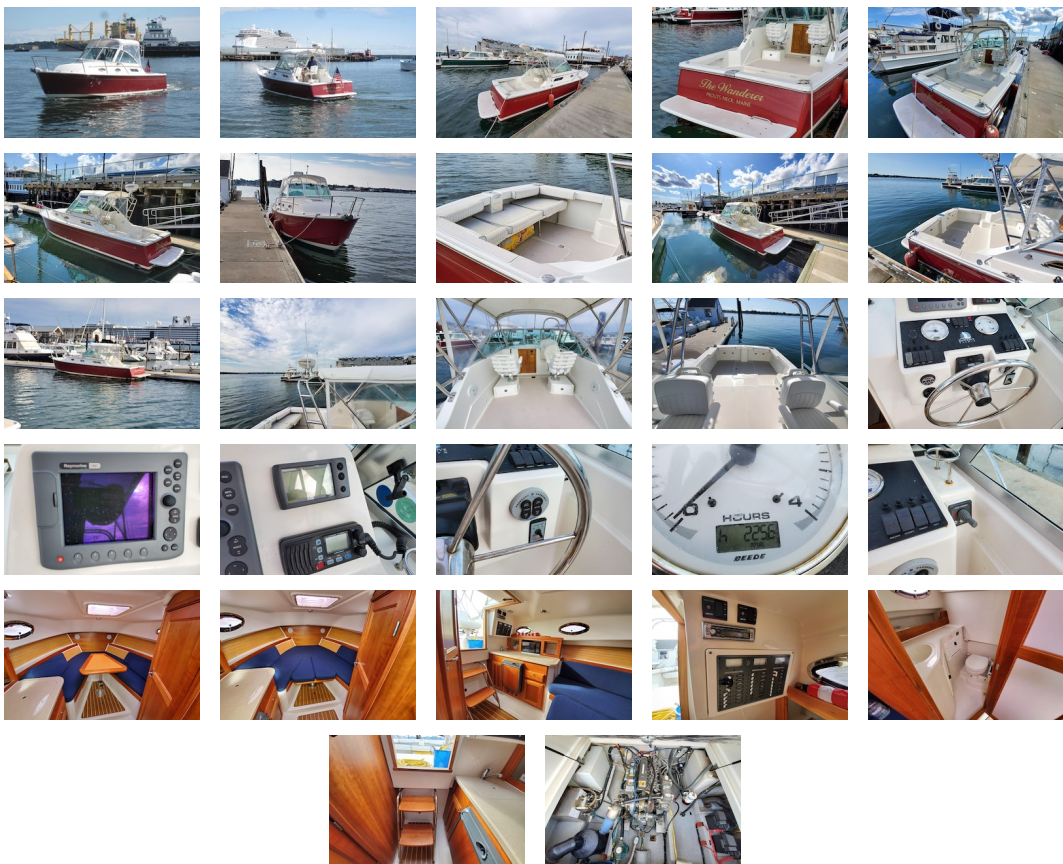
Cruise Speed:	22 kn	Engine Type:	Inboard
Drive Type:	Direct	Fuel Type:	diesel
Horsepower:	240 horsepower	Max Speed:	26 kn

TANK CAPACITIES

Fuel Tank:	100 gallon - 1 tank(s)	Fresh Water Tank:	30 gallon - 1 tank(s)
Holding Tank:	30 gallon - 1 tank(s)		

ACCOMODATIONS

Total Cabins:	1	Total Heads:	1
----------------------	---	---------------------	---



Cabin

- Cherry interior
- Dinette with backrest cushions
- Table
- V berth with filler cushion
- Shelves above berth
- Reading lights in dinette/ berth area
- Ash hull ceiling
- "Teak and Holly" high pressure laminate for cabin sole
- Overhead lighting
- Stainless steel opening ports with screens
- Storage under Dinette and forward berth
- Stereo system with CD and interior/cockpit speakers and wired remote

Electrical

- AC and DC control panel with polarity indicator
- DC breakers for electronics
- 110VAC 30 amp shorepower with 50 foot cord set
- Galvanic isolator
- Battery charger
- (2) 31 DCM batteries
- 12VDC bilge pump
- 12V outlet at helm
- Bonding system w/ zinc anode
- Cockpit courtesy lights
- GFI protected 110V circuits

Galley

- Origo single burner stove
- Front opening DC fridge
- Microwave oven
- Galley sink with single lever faucet
- Hot and cold pressure water
- Solid surface countertop
- Countertop cabinet
- Door below counter

Additional Description

- Yanmar 240 hp engine with ZF Marine gear 225hours
- Single lever engine control
- Engine control panel with alarms and hour meter
- Internal sea strainer
- Fuel Filter
- Engine room light
- 1.5" Aquamet or equal shaft
- 4 Blade bronze propeller
- Dripless shaft seal
- Electric Trim tabs
- Hydraulic steering
- Hot and Cold pressurized water (engine heated)
- SidePower bow thruster with joy stick control
- Marelon sea valves on underwater thru hulls
- Fuel tank
- Fireboy extinguisher system
- Macerator with overboard discharge

Helm

- Molded in contrasting anti-skid on walk surface
- Port and starboard molded steps leading to side and fore deck
- Accent stripe
- Hatch in main salon with screen
- Opening Port lights with screens
- Clear anodized aluminum windshield with side vent panels and integral handrails
- Windshield wipers
- Horn
- Compass, illuminated
- Running lights
- Anchor locker
- Mooring cleats
- Custom 1" 316L stainless steel bow rail
- Swim platform and swim ladder
- Self bailing cockpit
- Pompanette Helm Seats (2)
- Hot & Cold cockpit shower

Disclaimer The Company offers the details of this vessel in good faith but cannot guarantee or warrant the accuracy of this information nor warrant the condition of the vessel. A buyer should instruct his agents, or his surveyors, to investigate such details as the buyer desires validated. This vessel is offered subject to prior sale, price change, or withdrawal without notice.

PRESENTED BY

JIM MCAULIFFE

CELL 207-252-2737

OFFICE 207-865-0432 x300

jim@dimillos.com

