

1997 Sea Ray 400 Sedan Bridge **\$119,900**



Owner very serious in selling this season. Boat is priced to sell!

A great opportunity to own a very clean, well equipped 400 DB at a great value!

This 1997 Sea Ray 400 Sedan Bridge came off a fresh water lake a few years back and the current owners care for her greatly. Stored inside a heated building during the winter months and lightly cruised for only 4/5 months a year. With under 500 hours on her twin Mercruiser 7.4L MPI engines, your cruise speeds are 20 mph with WOT in the low 30 mph range. This 400 Sedan Bridge offers the perfect platform for family, kids, guests and great friends. Other features include 2-zone air/heat system, Simrad chartplotter, Simrad radar, full flybridge bimini & enclosure, Westerbeke 9.0kW generator, windlass, cockpit carpeting and more. More importantly, this boat has been extremely well maintained and it shows! All canvas, cushions, bilges, interior and exterior always shows well. That's what you get when you pay to have the boat stored inside a heated building each winter.

BASIC INFORMATION

Manufacturer:	Sea Ray	Model:	400 Sedan Bridge
Year:	1997	Category:	Power
Condition:	Used	Location:	Rockland, US
Vessel Name:	1997 Sea Ray 400 Sedan Bridge	Hull Material:	Fiberglass

DIMENSIONS & WEIGHT

Length:	40 ft	Beam:	14.25 ft
Draft - max:	3.33 ft		

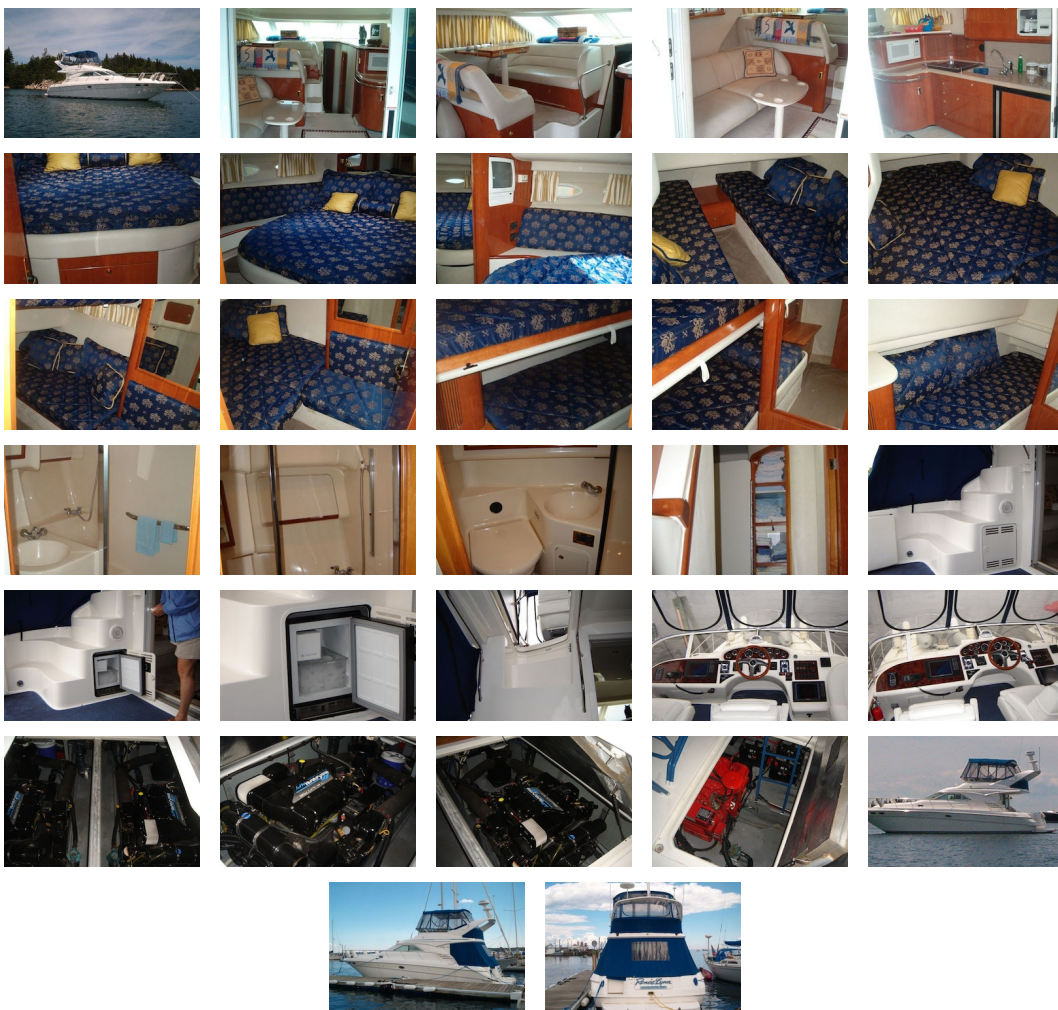
ENGINE

Make:	Twin Mercruiser	Model:	7.4L MPI
Engine(s):	2	Hours:	470
Cruise Speed:	19.99 kn	Fuel Type:	unleaded
Max Speed:	26.07 kn		

TANK CAPACITIES

Fuel Tank:	350 gallon - 1 tank(s)	Fresh Water Tank:	120 gallon - 1 tank(s)
Holding Tank:	28 gallon - 1 tank(s)		

ACCOMODATIONS



Dimensions Displacement: 22,000 lbs. (dry)

Engines Total Power: 340hp

Accommodations

- Three-stateroom layout
- Two private heads
- Salon galley & dinette up

- Spacious cockpit with transom door access to swimplatform
- Mold staircase to spacious flybridge
- Sunpad lounge on flybridge with large L-shaped settee and two Captain's chairs
- Engine room access through cockpit sole and salon sole

Galley/Head

- Galley
- Galley Salon
- Norcold AC/DC refrigerator & freezer
- Panasonic microwave
- Kenyon 3-burner cooktop
- Black&Decker coffee maker
- Single bowl sink
- Hot/cold pressure water
- Galley exhaust fan, 12V
- Galley outlet, 120V
- Cherry wood cabinetry
- Ample storage, above & below
- Head
- Two private heads
- Separate shower stalls
- Vacuflush heads
- Vanity tops with sink
- Hot/cold pressure water
- Head exhaust fans, 12V
- Head outlets, 120V
- Vanity storage
- Shower sump pumps
- Macerator pump for overboard discharge
- Deck pump-out

Electronics

- Simrad RA41C radar, 10" color
- Simrad CP40 chartplotter, 10" color
- Simrad IS15 depth
- Standard Horizon VHF radio (new 2009)
- Simrad RB715A 48NM scanner
- Simrad GPS receiver
- Dual 8ft. VHF antennas
- Shakespear TV antenna

Electrical

- Dual 30A shore power service
- (2) 50' shore cords
- 9.0kW Westerbeke generator
- Pro Mariner 40A battery charger
- (3) G31 house/start batteries
- (1) G27 generator battery
- AC/DC main distribution panel

Hull/Deck

- Stainless steel bow & safety rails, excellent condition
- Internal sea strainers
- Swim platform with ladder
- Anchor pulpit & roller with Delta 35lbs. anchor
- Fiberglass radar arch with radar mast

Additional Equipment

- 2-zone air conditioning with reverse cycle heat
- U-Line ice maker, in cockpit locker
- Sharp flatscreen TV in main salon/dinette (new 2009)
- Central vac system
- Windlass
- Dripless shaft logs
- Clarion stereo CD/AM/FM with 6 speakers
- Clarion remote control at flybridge helm

- Bimini top with 4-sided enclosure
- Cockpit 3-sided enclosure
- ACR searchlight with remote at helm
- Bennett trim tabs
- Carpet protectors, interior
- Hot/cold transom shower
- Shore water inlet
- Cable TV hookup

Comments Originally a Lake Champlain fresh water boat. Stored each winter inside a heated building. Overall condition is fantastic.

Disclaimer The Company offers the details of this vessel in good faith but cannot guarantee or warrant the accuracy of this information nor warrant the condition of the vessel. A buyer should instruct his agents, or his surveyors, to investigate such details as the buyer desires validated. This vessel is offered subject to prior sale, price change, or withdrawal without notice.

PRESENTED BY

PETER OUELLETTE

CELL 207-318-0626

OFFICE 207-773-7632 x285

peter@dimillos.com

