

2000 Mainship Pilot 30 Sedan **\$69,000**



The Mainship Pilot 30 is at home on the Chesapeake as well as in the Bahamas or the San Juan Islands. The full protection of the sand shoe design allows for beaching and running in shallow water. The full keel provides excellent stability in a beam sea while allowing the boat to track like it was on rails. Whether the purpose is to fish, dive or cruise, this Pilot 30 can fit the bill. The elongated cockpit allows for plenty of anglers, and the wide covering boards will accept a battalion of rod holders. A freshwater washdown and swim platform with a ladder will please the divers. The bridgedeck settees will double as extra bunks for the overflow of family and friends or as just a great place to tune up a tan. In the cabin, large V-berths double as a dinette and the mid-seats provide a great place to relax with a good book. The teak trimmed galley comes complete with range, a refrigerator, microwave, a sink, and icebox. Storage is plentiful, while light and ventilation is provided by six screened portlights and an overhead hatch. The large head boasts a Corian counter, an electric toilet and an integral shower, plus dry storage and a mirror. The single diesel will propel the Pilot 30 at a pleasant turn of speed while providing a truly economical rate of consumption. The wood-free exterior needs only soap and water and some waxing to maintain the sheen of the Flag Green gelcoat. The Pilot 30 is ergonomically designed to give the captain an excellent vantage point to observe surroundings and to pilot in safety. Sliding helm and companion seats make the cruising even more comfortable.

BASIC INFORMATION

Manufacturer:	Mainship	Model:	Pilot 30 Sedan
Year:	2000	Category:	Power
Condition:	Used	Location:	Portland, US
Hull Material:	Fiberglass		

DIMENSIONS & WEIGHT

Length:	30 ft	Beam:	10.25 ft
Draft - max:	2.92 ft	Bridge Clearance:	8 ft
Dry Weight:	10,000 lb		

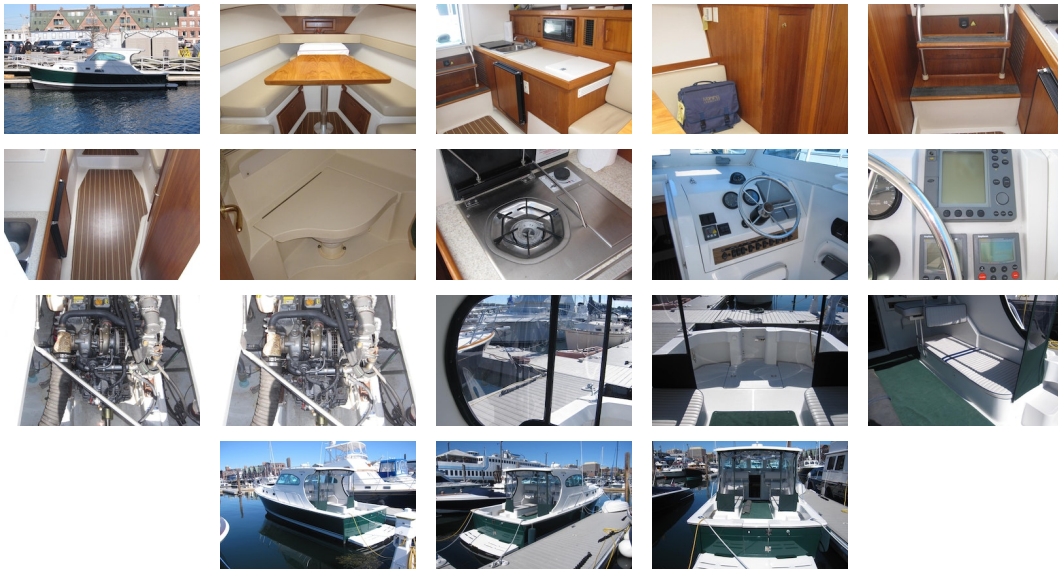
ENGINE

Make:	Yanmar	Model:	4LHA
Engine(s):	1	Hours:	270
Engine Type:	Inboard	Drive Type:	Direct
Fuel Type:	diesel	Horsepower:	230 horsepower

TANK CAPACITIES

Fuel Tank:	175 gallon - 1 tank(s)	Fresh Water Tank:	38 gallon - 1 tank(s)
Holding Tank:	14 gallon - 1 tank(s)		

ACCOMODATIONS



Factory Options

- Bow Thruster
- Awlgrip Dark Green Hull
- Cable TV/Telephone Hookup
- Propane Cooktop
- Dripless Shaft Log
- Raw Water Washdown
- Internal Sea-Strainer
- Lounge Seat Backrests
- Oil Exchange System
- Swim Platform
- Teak and Holly - Salon Floor
- Snap-In Cockpit Carpeting
- Aft Enclosure

Navigation Equipment

- Ray RL70C MFD - Chartplotter & Radar
- Ray 4kW Radar
- Raytheon Auto-Pilot
- Raytheon ST 60 Depth
- Ray VHF

Disclaimer

The Company offers the details of this vessel in good faith but cannot guarantee or warrant the accuracy of this information nor warrant the condition of the vessel. A buyer should instruct his agents, or his surveyors, to investigate such details as the buyer desires validated. This vessel is offered subject to prior sale, price change, or withdrawal without notice.

PRESENTED BY

SCOTT MACLEAN

CELL 207-318-0627

OFFICE 207-773-7632 x289

scott@dimillos.com

