

2004 Mainship Pilot 34 Express **\$117,900**



Recently listed, "La Herradura" the 2004 Mainship Pilot 34 is built with everything in mind. Short weekend overnights or enjoy two weeks at a time, she'll offer everything you need to cruise in comfort. Her option list includes the ever popular Yanmar 370hp, generator, custom radar arch, custom bimini w/ enclosure, complete Raymarine electronics, and many smaller custom features which are sure to please her next owner. "La Herradura" is located just north of Boston and is easily accessible.

BASIC INFORMATION

| | | | |
|----------------------|------------------------|-----------------------|------------------|
| Manufacturer: | Mainship | Model: | Pilot 34 Express |
| Year: | 2004 | Category: | Power |
| Condition: | Used | Location: | Gloucester, US |
| Vessel Name: | 2004 Mainship 34 Pilot | Hull Material: | Fiberglass |
| Designer: | Mainship Corp. | | |

DIMENSIONS & WEIGHT

| | | | |
|---------------------|---------|--------------|----------|
| Length: | 34 ft | Beam: | 12.25 ft |
| Draft - max: | 3.25 ft | | |

ENGINE

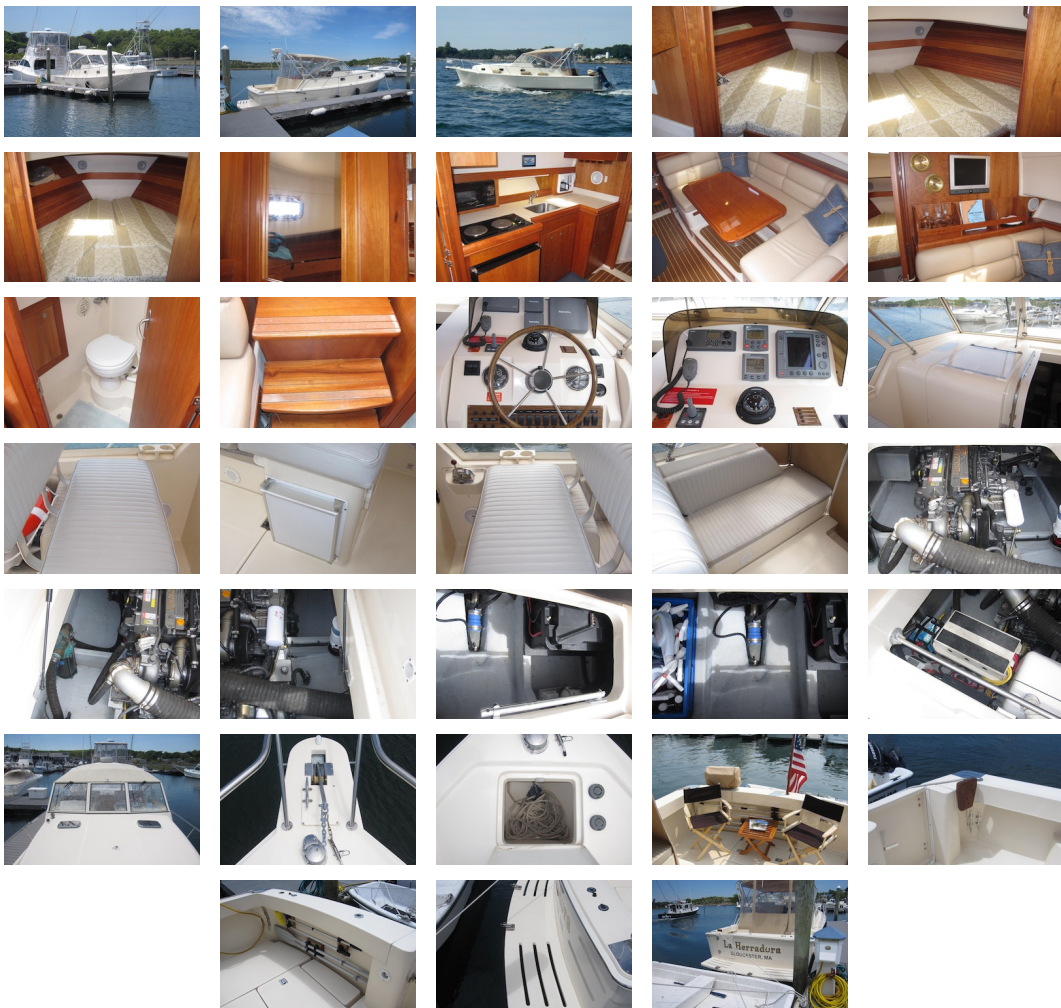
| | | | |
|---------------------|-------------------|----------------------|----------|
| Make: | Single 370 Yanmar | Model: | 6LYA-STP |
| Engine(s): | 1 | Cruise Speed: | 17 kn |
| Engine Type: | Inboard | Drive Type: | Direct |

Fuel Type: diesel **Horsepower:** 370 horsepower
Max Speed: 21 kn

TANK CAPACITIES

Fuel Tank: 250 gallon - 1 tank(s) **Fresh Water Tank:** 70 gallon - 1 tank(s)
Holding Tank: 20 gallon - 1 tank(s)

ACCOMODATIONS



Accommodations

- Cherry Interior
- Convertible Dinette to Double Berth
- Everwear Laminated Teak and Holly Flooring
- Interior Lighting
- Opening Stainless Steel Hatches w/Screens (2)
- Opening, Screened Stainless Steel Portlights (6)
- 15" Flat Panel TV with Stereo, CD & DVD Player
- Forward Cabin
- Cedar-Lined Hanging Lockers (2)
- High-Intensity Reading Lights (2)
- Opening Stainless Steel Hatch w/Screen
- Storage Under Berths
- V-Berth w/Filler

Galley/Head

- Galley
- Above and Below Counter Storage
- Corian Counters
- Countertop Storage Bins
- Designer Faucet
- Microwave Oven
- Oversized Galley Sink
- Refrigerator/Freezer (AC/DC)
- Two Burner Electric Range
- Water Tank Monitor
- Wine & Liquor Bottle Storage
- Head
- Built-In Vanity w/Corian Counter
- Electric Toilet w/Holding Tank
- Mirror
- Molded Fiberglass Head – Durable, Easy to Clean
- Power Ventilator
- Shower – Hot & Cold
- Shower Sump Pump
- Waste Tank Monitor

Electronics

- Raymarine RL70 Color Plus Display for Radar/Chartplotter
- Ramarine 4 kW Radar
- Ray215 VHF
- ST6001 Autopilot
- ST60 Tri-data

Electrical

- AC/DC Converter – 30 Amp
- Battery Safety Switch
- Bonding System w/Zinc Anode
- Circuit Breakers (AC/DC)
- Color-Coded Wiring Harnesses
- Electric Bilge Pumps w/Auto Switch(3)
- Electrical Distribution Panel
- GFCI Protection Throughout
- High Water Alarm w/4000 gph Emergency Bilge Pump
- Interior Lights – 12 V
- Macerator w/Overboard Discharge
- Reverse Polarity Indicator
- TV Antenna
- TV/Telephone Dockside Connection
- Water Heater
- Water Tank Monitor
- 50 Foot, 30 Amp Shore Power Cord

Hull and Deck

- Anchor Locker
- Bow Rail – Custom 316L Stainless Steel
- Bridge Seating for Six w/Storage Underneath
- Cleats – Bow, Stern and Spring
- Cockpit Storage
- Courtesy Lights – Cockpit and Bridge Deck
- Dockside Water Connection
- Engine Instrumentation – Tachometer, Voltmeter, Oil Pressure and Temperature Gauges
- Fiberglass Anchor Pulpit with Roller
- High Density Rub Rail w/Stainless Steel Insert
- Insulated Ready Box/Cooler
- Safety Rails – Stainless Steel
- Sliding Companionway Door
- Venting Windshield w/Wipers

Mechanical

- Bronze Strut and Rudder
- Engine Alarm System
- Fire Extinguisher System

- Freshwater Cooling on Engine
- Fuel Filter
- Full Keel and Sand Shoe w/Full Prop Protection
- Hot and Cold Pressurized Water
- Hydraulic Steering
- Sea Strainer
- Seacocks on Underwater Thru-Hull Fittings
- Stainless Steel Shaft – Aquamet
- Trim Tabs
- Welded Aluminum Fuel Tank

Optional Equipment

- Air Conditioning w/Reverse Cycle Heat
- Bow Thruster – 4 hp
- Canvas Package
- Cherry Hull Side Slats in Forward Stateroom
- Dripless Shaft Log
- Electric Stove
- Raymarine Electronics Packages
- Generator – 3.5 kw Diesel w/Sound Shield - 45 hours
- Internal Sea Strainer
- Salt-Water Washdown
- Fresh-Water Washdown
- Radar Arch
- Swim Platform w/Ladder
- Windlass
- X-Change-R Oil Change System
- 9' Dinghy with Weaver Snap Davits

Disclaimer The Company offers the details of this vessel in good faith but cannot guarantee or warrant the accuracy of this information nor warrant the condition of the vessel. A buyer should instruct his agents, or his surveyors, to investigate such details as the buyer desires validated. This vessel is offered subject to prior sale, price change, or withdrawal without notice.

PRESENTED BY

SCOTT MACLEAN

CELL 207-318-0627

OFFICE 207-773-7632 x289

scott@dimillos.com

