

## 2001 Mainship 390 Trawler **\$130,000**



!!New Price, Owner wants it Sold!!!! This very well kept Mainship 390 Trawler just became available and is very well equipped for cruising. The equipment list includes a single Caterpillar 3126 diesel, the motor just had a 300 hr service and adjustment with new anodes. Bow thruster, generator, a nice davit system, propane stove and oven, reverse cycle air and heat, Brand new full canvas package (includes bimini, enclosure). Windshield covers, weathercloths around bridge rails. Plus it has a new Garmin 4210 Chartplotter/GPS. It also has a Raymarine 2kw raydome with a RL70c monitor, depth sounder, VHF. Please call us today for complete details.

### BASIC INFORMATION

<b>Manufacturer:</b>	Mainship	<b>Model:</b>	390 Trawler
<b>Year:</b>	2001	<b>Category:</b>	Power
<b>Condition:</b>	Used	<b>Location:</b>	Portland, US
<b>Vessel Name:</b>	Wanda	<b>Hull Material:</b>	Fiberglass

### DIMENSIONS & WEIGHT

<b>Length:</b>	39 ft	<b>Beam:</b>	14.33 ft
<b>Draft - max:</b>	0.25 ft		

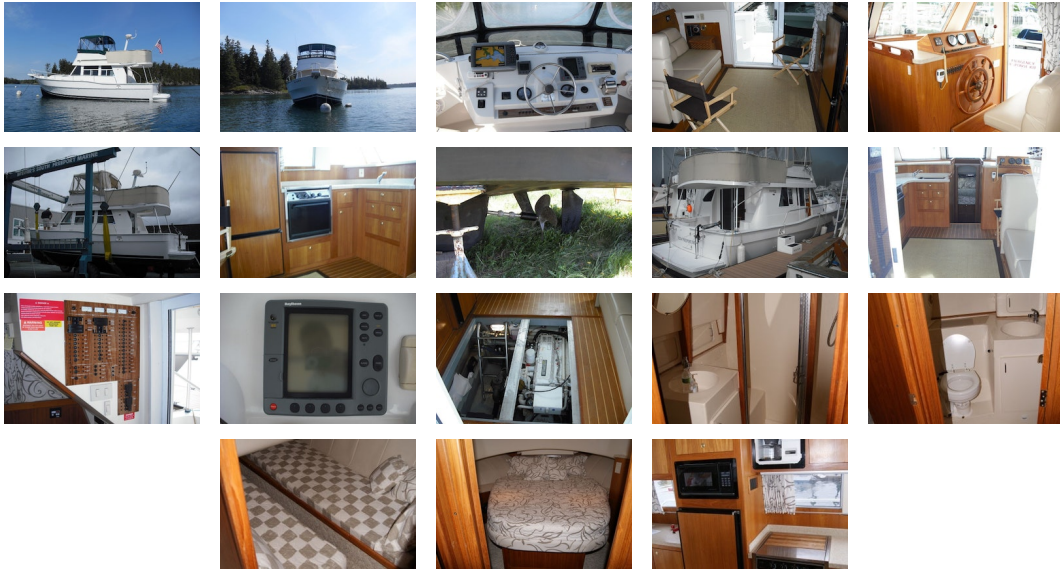
### ENGINE

<b>Make:</b>	Caterpillar	<b>Model:</b>	3126
<b>Engine(s):</b>	1	<b>Hours:</b>	380
<b>Fuel Type:</b>	diesel		

## TANK CAPACITIES

**Fuel Tank:** - tank(s)    **Fresh Water Tank:** - tank(s)  
**Holding Tank:** - tank(s)

## ACCOMODATIONS



**Dimensions** Displacement: 22,000

**Engines** Total Power: 300 Cruising Speed: 11k

**Tanks** Fuel: 300 Fresh Water: 130 Holding: 30

**2010 Upgrades** The Holding tank was replaced with a new one as well as all hose and pumps, and a charcoal filter was added to the tank vent. A Garmin 4210 Gps/Chartplotter was added in addition to the Raymarine Gps which is now a backup. A new Dark Green Sunbrella Bimini and enclosure was installed this spring at a cost of almost \$5,000. The Owner also is including a ton of spare parts, impellers, belts, filters, hoses.

- Molded Swim Platform
- Transom Door
- Spacious Cockpit
- Molded Steps to Bridge
- Wide Walkarounds
- Galley Up Salon
- Lower Helm Station
- Sofa w/fold out double bed
- Teak and Holly Soles
- Corian Counters
- Master Stateroom Forward
- Island Berth w/storage Underneath
- Two Hanging Lockers
- Two Storage Drawers
- Guest Stateroom w/twin bunks
- Hanging Locker
- Spacious Flybridge
- Built in Table on Bridge
- TV/VCR

**Galley/Head**

- Galley Up to Port
- Three burner Princess Propane Stove/Oven
- Coffee Maker
- Refrigerator/Freezer
- Cabinet and Drawer Storage
- Corian Counters
- Molded fiberglass head with teak cabinetry.
- Separate Shower
- New Holding Tank/ and all hoses
- Electric Head w/ Holding Tank
- New Macerator Pump

#### **Electronics**

- Upper Station
- New Garmin 4210 GPS Chartplotter
- Raytheon RL70 Chartplotter, Radar (w/4 kW dome)
- Raytheon ST60 Depth
- Lower Station
- Ray 210 VHF
- Raytheon ST60 Depth
- Bow thruster

#### **Electrical**

- 8.0 kW Kohler Generator
- One trojan saring Battery
- Two 8D 12V DC Batteries
- Two 30A 110V Shore Power Circuits
- Forward and Aft Power Hookups
- Forward and Aft Cable TV/Tel hook-up

#### **Hull/Deck**

- Bow Rails
- Bow Pulpit
- Molded Steps to Bridge
- Cleats with Backing Plates
- Flybridge Overhang
- Built in folding table on Bridge
- Swim Ladder
- Molded Swimplatform
- Fresh water washdown
- Saltwater washdown

#### **Additional Equipment**

- Life Jackets
- Flare kit
- Lines
- Fenders
- Throwable life ring
- Boat hook
- New engine manual
- New generator manual
- Parts Manual

**Disclaimer** The Company offers the details of this vessel in good faith but cannot guarantee or warrant the accuracy of this information nor warrant the condition of the vessel. A buyer should instruct his agents, or his surveyors, to investigate such details as the buyer desires validated. This vessel is offered subject to prior sale, price change, or withdrawal without notice.

