

2012 Back Cove 30 **\$255,000**



Just Launched!

She is in the water and at our dock. This one owner boat is in great condition and loaded with options. Our service team just finished up the bottom paint, gold cove stripe, zincs and commissioning, she was just painted last month and is ready for a new owner.

- Fresh Flag Blue Awlgrip paint job 2/18
- Volvo 370 D6 with 215 hours
- Bow & Stern thrusters
- Helm deck trim package
- LCD tv with dvd player
- Stidd helm seat
- Garmin electronics
- Varnish 3/18

BASIC INFORMATION

Manufacturer:	Back Cove	Model:	30
Year:	2012	Category:	Power
Condition:	Used	Location:	Portland, US
Vessel Name:	Back Cove 30	Hull Material:	Fiberglass
Designer:	Back Cover Design Team		

DIMENSIONS & WEIGHT

Length:	30 ft	Beam:	11.17 ft
Draft - max:	2.5 ft		

ENGINE

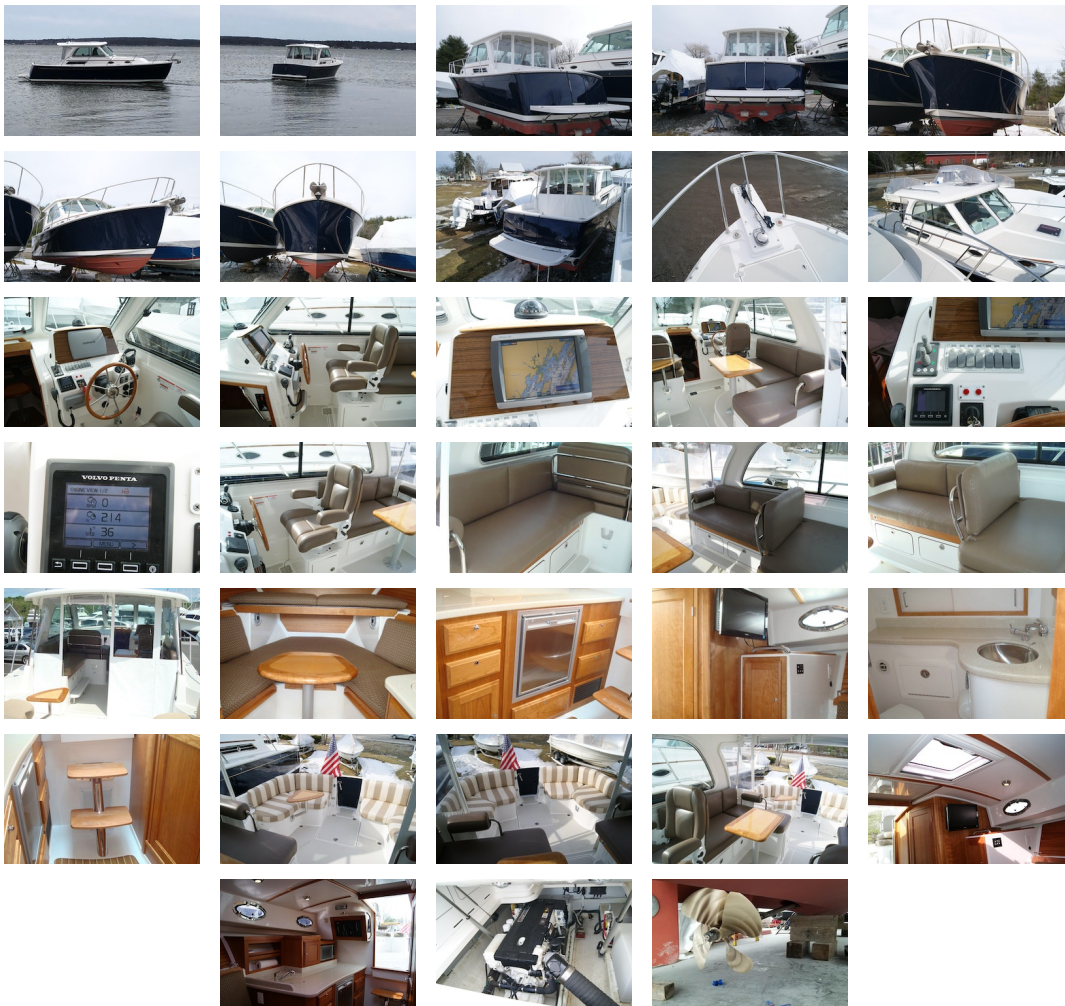
Make:	Volvo	Model:	D6
Engine(s):	1	Hours:	215
Cruise Speed:	24 kn	Engine Type:	Inboard
Drive Type:	Direct	Fuel Type:	diesel
Horsepower:	370 horsepower	Max Speed:	27 kn

TANK CAPACITIES

Fuel Tank:	160 gallon - 1 tank(s)	Fresh Water Tank:	60 gallon - 1 tank(s)
Holding Tank:	30 gallon - 1 tank(s)		

ACCOMODATIONS

Total Cabins:	1	Total Berths:	2
Total Heads:	1		



Accommodations

- Varnished Cherry interior
- Dinette with backrest cushions
- Round table with inlay
- V-berth with filler cushion
- Shelves above berth
- Cedar lined hanging locker
- Reading light in dinette / berth area
- Cherry hull ceilings
- "Teak and Holly" laminate cabin sole
- Overhead lighting
- XM Satellite Radio Ready stereo system with CD and MP3Jack
- Interior / cockpit speakers with wired remote
- LCD TV with built in DVD player
- Air conditioning /Heat
- Storage under dinette and forward berth

Galley

- Origo Alcohol / 110V single burner stove
- Front opening AC/DC fridge
- Galley sink with single lever faucet & drop in cover
- Solid surface countertop
- Countertop cabinet
- Microwave built into cabinet
- Drawer and doors below counter

Head

- Built-in vanity with sink
- Solid surface countertop
- Mirror
- Pull out single lever faucet / shower
- Shower drain / pump system
- Fresh water electric MSD with holding tank
- Waste tank monitor
- Macerator for overboard discharge
- Pump out fitting on deck
- Stainless steel opening port with screen
- Vent Fan

Deck

- Port & starboard molded steps leading to side & fore deck
- Molding in seating in cockpit port and starboard
- Transom door on centerline
- Teak accent stripe
- Back Cove white iso-npg gelcoat with graystone anti-skid on walking surfaces
- Resin infused balsa core sandwich structure
- Lewmar hatch in main salon with screen
- (4) opening Port lights with screens
- FRP hard top with anodized aluminum windows and opening windows port, starboard and center
- Pilot hatch overhead
- Hand rails on hard top port and starboard
- (3) windshield wipers with washer system
- Horn
- Compass, illuminated
- Running lights
- Anchor locker
- Anchor platform with roller
- Mooring cleats with skene chocks forward, aft and spring line cleats. Aft cleats are pop-up style
- Custom 1 1/4" 316L stainless steel bow rail
- Stidd helm seat
- Mates bench seat to port

Hull

- Advanced prop pocket hull design
- Back Cove iso-npg gelcoat
- Vinylester backup resin
- Resin infused hull with PVC foam core sandwich
- Awlgrip boot top

- Encapsulated foam stringers

Electrical System

- AC and DC control panels with polarity indicator
- DC system battery management switching
- DC breakers for electronics
- 110V AC 30 amp shorepower with 50 foot cord set
- Galvanic isolator
- Battery Charger
- (3) 31 DCM house battery
- (1) 31 engine start battery
- (2) 12VDC bilge pumps
- 2V outlet at helm
- Bonding system with zinc anode
- Cockpit courtesy lights
- GFI protected 110V circuits

Mechanical Systems

- Volvo 370hp Engine 215 hours
- Electronic single lever engine control
- Engine control panel with alarms and hour meter
- Emergency cross over switch
- Internal sea strainer
- Fuel Filter
- Engine room lighting
- 1.5" Aquamet shaft
- 4 Blade NiBrAl propeller
- PSS Dripless shaft log
- Electric trim tabs
- Tilting helm pump driven hydraulic steering
- Hot and Cold pressurized water (110V and engine heated)
- SidePower bow & Stern thruster thruster with joy stick control, 88 lbs thrust
- Marelon sea valves on underwater thru hulls
- 140 gallon fuel tank with 2" fill
- Fireboy extinguisher system
- Macerator with overboard discharge

Additional Equipment

- Dark Blue Paint 2/18
- Boot Top Color - White
- Interior Cushions - Hoopla Dark Sunbrella
- Helm Deck Cushion - Woodpecker Ultraleather
- Aft Seat Cushion - Windham Dune Sunbrella
- Stidd Helm Chair Upgrade from standard helm seat - Woodpecker Ultraleather
- Refrigerator Below Mates Bench Seat
- Insulated Aft Cockpit Seat Box (one side) for Ice & Cold Drinks, self draining
- Helm deck trim package - wood trimmed wheel, cherry battens on overhead, trim on dash and additional helm deck table
- Bow Thruster w/ joystick control
- Stern Thruster IP w/ joystick control
- Anchor Windlass
- Salt Water Washdown Fore & Aft
- Oil Changing System
- LCD TV/DVD on Swivel Bracket
- Below Cabin A/C with Reverse Cycle Heat, 8Kbtu
- Mast for hardtop
- 4-Piece Aft Enclosure - White Stamoid with Strata-Glass
- Aft Stamoid seat covers

Electronics

- Garmin 5215 GPS chartplotter with depth/ color touch screen
- New Garmin 4kw 18" XHD Radar dome
- Garmin VHF
- Volvo 4" digital display
- Garmin gsd 24 sounder
- Richie compass
- Jensen stereo remote

Disclaimer

The Company offers the details of this vessel in good faith but cannot guarantee or warrant the accuracy of this information nor warrant the condition of the vessel. A buyer should instruct his agents, or his surveyors, to investigate such details as the buyer desires validated. This vessel is offered subject to prior sale, price change, or withdrawal without notice.

PRESENTED BY

JIM MCAULIFFE

CELL 207-252-2737

OFFICE 207-865-0432 x300

jim@dimillos.com

