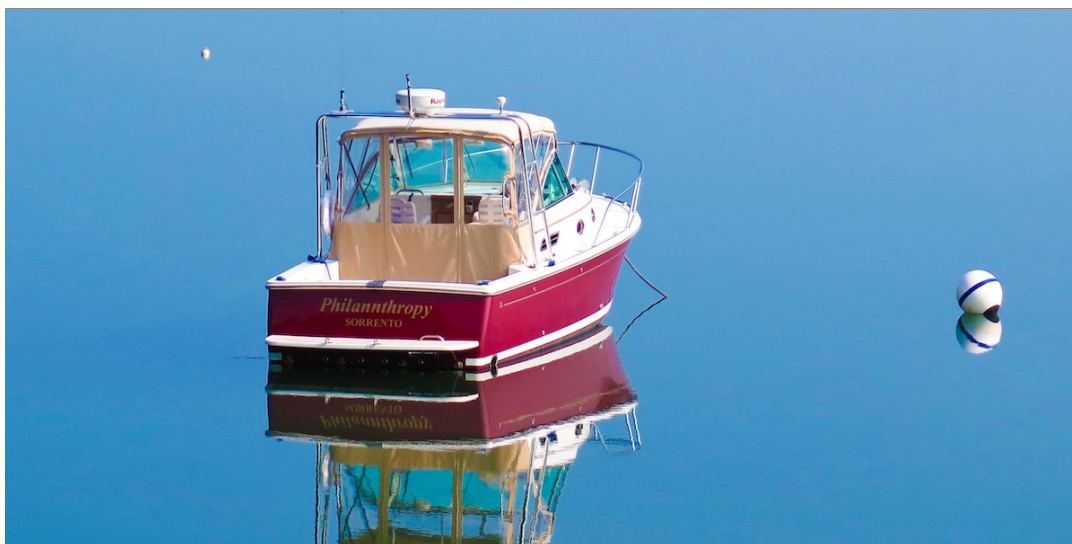


## 2005 Back Cove 26 **\$89,500**



Just Listed!

2005 Back Cove 26 Open

- Awlgrip Claret red hull
- New Toast canvas top and sides 2019
- Davits/ 8 'Achilles Rib/ soft bottom
- Custom Arch
- Bow & Stern Thruster
- Raymarine Electronics/ with Radar
- Invertor with 3rd Battery
- Freshly waxed/ bottom painted/ zinc's

### BASIC INFORMATION

<b>Manufacturer:</b>	Back Cove	<b>Model:</b>	26
<b>Year:</b>	2005	<b>Category:</b>	Power
<b>Condition:</b>	Used	<b>Location:</b>	En-route to Freeport, US
<b>Hull Material:</b>	Fiberglass	<b>Designer:</b>	The Back Cove Design Team

### DIMENSIONS & WEIGHT

<b>Length:</b>	26 ft	<b>Beam:</b>	9.33 ft
<b>Draft - max:</b>	2.5 ft		

### ENGINE

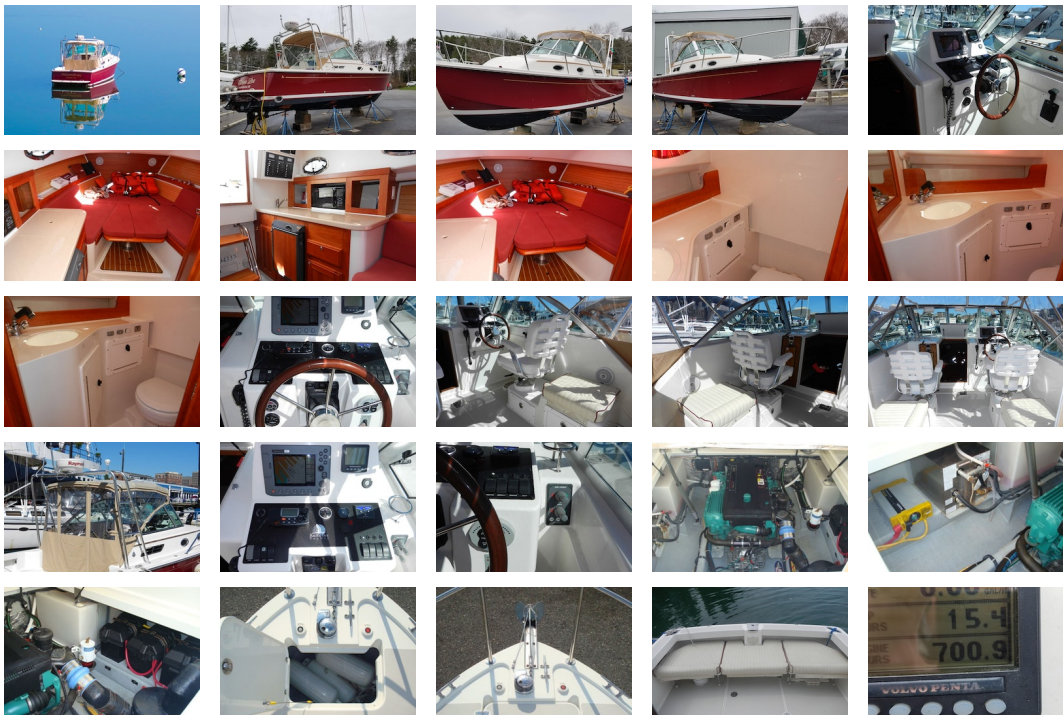
<b>Make:</b>	Volvo Penta	<b>Model:</b>	D4 electronic common-rail
<b>Engine(s):</b>	1	<b>Hours:</b>	700
<b>Engine Type:</b>	Inboard	<b>Drive Type:</b>	Direct
<b>Fuel Type:</b>	diesel	<b>Horsepower:</b>	260 horsepower

## TANK CAPACITIES

<b>Fuel Tank:</b>	100 gallon - 1 tank(s)	<b>Fresh Water Tank:</b>	30 gallon - 1 tank(s)
<b>Holding Tank:</b>	30 gallon - 1 tank(s)		

## ACCOMODATIONS

<b>Total Cabins:</b>	1	<b>Total Heads:</b>	1
----------------------	---	---------------------	---



### Cabin

- Cherry wood interior
- Dinette with backrest cushions
- Cherry table w/ birds-eye maple inlay
- Vee berth with filler cushion
- Shelves above berth
- Reading lights in dinette/ berth area
- Ash hull ceiling
- Teak and holly soles
- Overhead lighting
- Stainless steel opening ports with screens
- Storage under Dinette and forward berth

### Galley/Head

- Galley
- Origo single burner stove
- Front opening DC refrigerator

- Microwave oven
- Galley sink with single lever faucet
- Hot and cold pressure water
- Solid surface countertop
- Countertop cabinet with sliding doors
- Door below counter
- Head
- Electric Jabsco Quiet Flush
- Built-in vanity with sink
- Mirror
- Pull out single lever faucet/ shower
- Shower drain/ pump system
- MSD w/ macerator and holding tank
- Macerator for overboard discharge
- Pump out fitting on deck
- Stainless steel opening port with screen

### **Raymarine Electronics**

- Raymarine C80 chartplotter
- Raymarine DSM300 digital depth sounder
- Raymarine 2kW radar scanner
- B744V bronze transducer with fairing block
- Raystar 125 GPS receiver
- Ray 54 VHF radio
- 8ft. Shakespeare VHF antenna

### **Electrical**

- 1800W Inverter
- AC and DC control panel with polarity indicator
- DC breakers for electronics
- 110VAC 30 amp shorepower with 50 foot cord set
- Galvanic isolator
- Battery charger
- (3) 31 DCM batteries
- (2) 12VDC bilge pump
- 12V outlet at helm
- Bonding system w/ zinc anode
- Cockpit courtesy lights
- GFI protected 110V circuits

### **Mechanical**

- Upgraded from standard engine, Volvo electronic D4 260hp
- Electronic engine shift & throttle control
- Electric engine hatch, up/down switch 12V
- Engine control panel with alarms and hour meter
- Internal sea strainer
- Racor Fuel Filter
- Engine room light
- 1.5" Aquamet or equal shaft
- 4 Blade bronze propeller
- Dripless shaft seal
- Trim tabs
- Hydraulic steering
- Hot and Cold pressurized water (engine heated)
- SidePower bow thruster & stern thruster with joystick control
- Marelon sea valves on underwater thru hulls
- Fuel tank
- Fireboy extinguisher system
- Macerator with overboard discharge

### **Deck**

- **Awlgrip (2015)** Claret with white boot stripe
- Gold leaf cove stripe
- Radar arch
- Molded in contrasting anti-skid on walk surface
- Port and starboard molded steps leading to side and fore deck
- Accent stripe
- Hatch in main salon with screen
- Opening Port lights with screens

- Clear anodized aluminum windshield with side vent panels and integral handrails
- Windshield wipers (3) electric
- Horn
- Compass, illuminated
- Running lights
- Anchor locker
- Mooring cleats
- Custom 1" 316L stainless steel bow rail
- Swim platform
- Swim ladder
- Self bailing cockpit

#### **Additional Equipment**

- **Awlgrip Claret hull with White boot stripe (2015)**
- Volvo D4 electronic 260hp electronic diesel
- Electronic engine shift control
- SidePower Stern thruster
- SidePower Bow thruster
- 3-wiper windshield system
- Interior cushions - custom Citizen Claret fabric
- Electric Anchor windlass
- Oil changing system
- Electric engine hatch
- Helm deck jump seats w/ storage
- Swim platform
- Cockpit shower
- 1800W Inverter
- Electric head
- Pop-up stern cleats
- Bimini top with eisenglass enclosure
- Radar arch

**Disclaimer**The company offers the details of this vessel in good faith but cannot guarantee or warrant the accuracy of this information nor warrant the condition of the vessel. A buyer should instruct his agents, or his surveyors, to investigate such details as the buyer desires validated. This vessel is offered subject to prior sale, price change, or withdrawal without notice.

**Disclaimer**The Company offers the details of this vessel in good faith but cannot guarantee or warrant the accuracy of this information nor warrant the condition of the vessel. A buyer should instruct his agents, or his surveyors, to investigate such details as the buyer desires validated. This vessel is offered subject to prior sale, price change, or withdrawal without notice.

PRESENTED BY

**JIM MCAULIFFE**

CELL 207-252-2737

OFFICE 207-865-0432 x300

jim@dimillos.com

