

2004 General Marine 26 Downeast Cruiser

\$46,500



The General Marine 26 is a classic downeast hull design with a strong commercial heritage. The 26 has a full keel for running gear protection and lateral stability, molded in spray rails and wide flair in the bow for a dry ride. The 26 is a versatile boat with a spacious interior and easy access to the machinery. The hull is constructed of solid glass using vinylester resins, high tech fiberglass and high quality gelcoats. All hardware is 316 stainless steel above the waterline and silicon bronze below the waterline. The deck and interior are fully molded with diamond nonskid and molded in hatches.

BASIC INFORMATION

Manufacturer:	General Marine	Model:	26 Downeast Cruiser
Year:	2004	Category:	Power
Condition:	Used	Location:	Portland, US
Vessel Name:	HUNTRESS	Hull Material:	Fiberglass

DIMENSIONS & WEIGHT

Length:	26 ft	Beam:	9.5 ft
----------------	-------	--------------	--------

ENGINE

Make:	MerCruiser	Model:	Horizon MPI 350 CID
Engine(s):	1	Hours:	625
Engine Type:	Inboard	Drive Type:	Direct

Fuel Type:

unleaded

Horsepower:

300 horsepower

TANK CAPACITIES

Fuel Tank:

90 gallon - 1 tank(s)

Fresh Water Tank:

15 gallon - 1 tank(s)

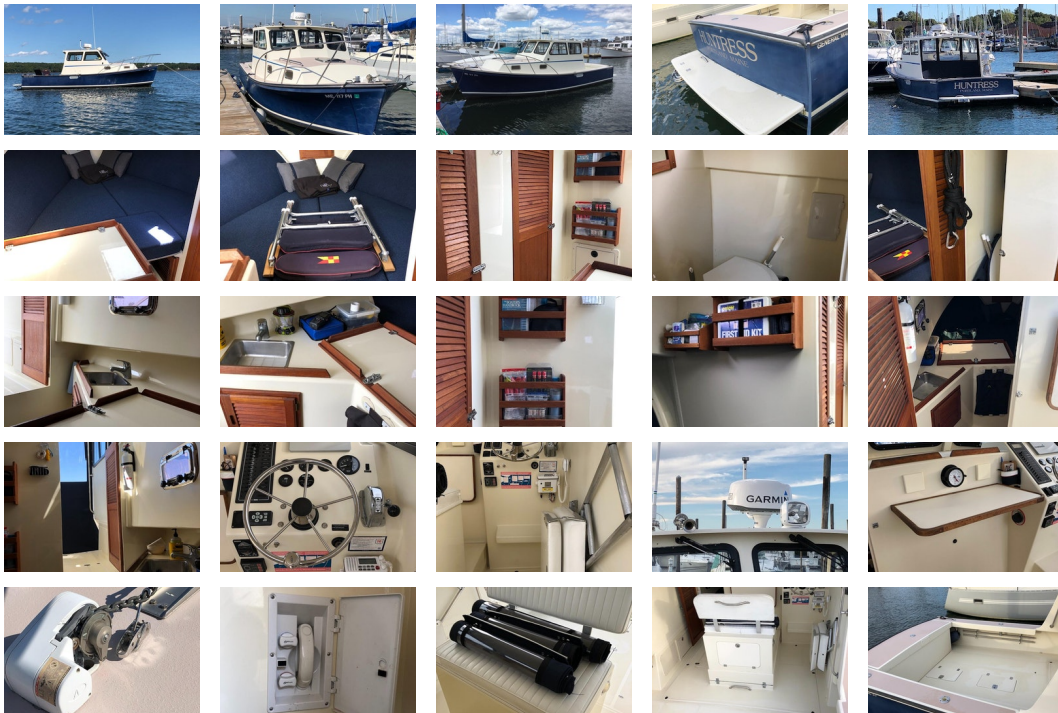
Holding Tank:

15 gallon - 1 tank(s)

ACCOMODATIONS

Total Heads:

1



Additional Information

- (3) flush cockpit hatches
- Heavy duty stainless steel cleats
- chocks and bow bit
- Heavy duty PVC rub rail
- Molded in splash rails
- Safety plate windows with anodized aluminum frames
- (4) Port holes (screened/opening)
- 1 1/2" Aquamet 22 Shaft
- Walters split coupling
- 90 gallon aluminum fuel tank
- Non-skid foredeck and sole deck
- Morse controls/heavy duty cables
- Heavy duty skeg/rudder
- 19" Prop (4 Blade)
- 12V DC electric panel with 12 breakers
- Battery test and dual switch
- Navigation lights
- Cabin lights
- Auto bilge
- Rope locker
- (2) Wipers
- Bow eye
- Vee bunks with cushions and storage below
- Stainless steel sink
- Enclosed head with manual head, holding tank, and Y-valve

- Anchor windlass

Navigation Equipment

- Garmin 942xs touchscreen chart plotter, with heading sensor and sonar module (2017)
- Garmin HD18 radar, integrated with chart plotter (2018)
- ICOM VHF radio
- Ritchie compass
- Remote control spot light

Additional Information

- LED cockpit light
- Lewmar Windlass
- Windshield wipers on two pilot house windows
- Custom three-piece canvas curtain for pilothouse
- Custom cockpit awning with stainless steel rods
- Recent engine work, including new raw water pump and alternator (2020), heat exchanger (2017), and exhaust headers (2016)

Disclaimer The Company offers the details of this vessel in good faith but cannot guarantee or warrant the accuracy of this information nor warrant the condition of the vessel. A buyer should instruct his agents, or his surveyors, to investigate such details as the buyer desires validated. This vessel is offered subject to prior sale, price change, or withdrawal without notice.

PRESENTED BY

SCOTT MACLEAN

CELL 207-318-0627

OFFICE 207-773-7632 x289

scott@dimillos.com

