

2014 Sabre 42 Salon Express **\$639,000**



Suzie Marie has been in fresh or brackish water all of her life. This very well optioned Sabre 42 is ready for her next adventure as she has been maintained to builders specification. The optional Freedom Lift secures any tender and is in excellent condition (The Brig tender does NOT convey at this price). From her Tracvision, to her Shureshade cockpit cover, to her electric sunroof, Suzie Marie will more than satisfy the discriminating Sabre enthusiast.

Please call or text Pete Dierks for more information -

BASIC INFORMATION

Manufacturer:	Sabre	Model:	42 Salon Express
Year:	2014	Category:	Power
Condition:	Used	Location:	Oxford, US
Vessel Name:	Suzie Marie	Hull Material:	Fiberglass
Designer:	Sabre Design Team		

DIMENSIONS & WEIGHT

Length:	42 ft	Beam:	14 ft
Draft - max:	3.33 ft	Bridge Clearance:	12.5 ft
Dry Weight:	30,000 lb		

ENGINE

Make:	Cummins	Model:	QSB 380HP 6.7
--------------	---------	---------------	---------------

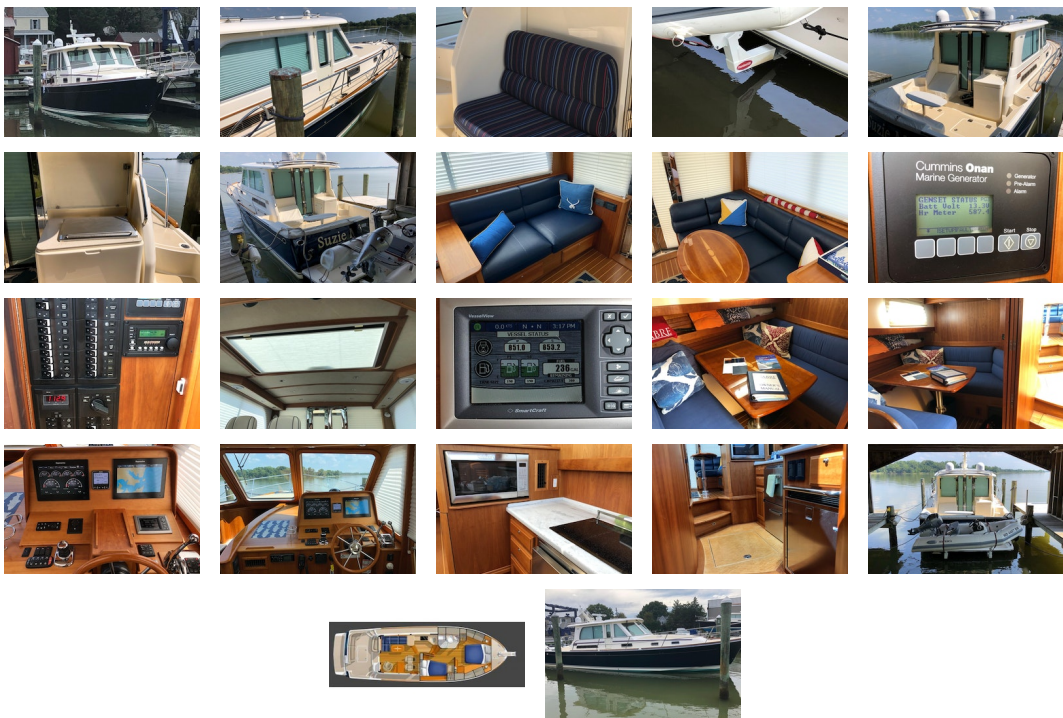
Engine(s):	2	Hours:	853
Cruise Speed:	26 kn	Range:	345.23 mi
Engine Type:	Inboard	Drive Type:	Pod
Fuel Type:	diesel	Horsepower:	380 horsepower
Max Speed:	32 kn		

TANK CAPACITIES

Fuel Tank:	190 gallon - 2 tank(s)	Fresh Water Tank:	140 gallon - 1 tank(s)
Holding Tank:	60 gallon - 1 tank(s)		

ACCOMODATIONS

Total Cabins:	2	Total Berths:	6
Total Heads:	1		



Steering System Joystick Control

Manufacturer Provided Description

At Sabre Yachts our goal has always been to fulfill the dreams and wishes of our boat owners by listening carefully to their requests and blending their ideas into exciting designs. We consider our owners and potential owners to be valued members of the Sabre Design Team. The Sabre 42 is the result of our observation that our clients want to enjoy the same levels of personal luxury and comfort that they have come to expect in their homes and in their automobiles. To that end we have developed a style of sedan, available with or without fly bridge, that permits boaters to operate from the comfort of the yacht's interior or from the openness of an optional fly bridge. Technology is advancing rapidly and our owners have come to expect that if there is a new technology available, we will employ it in our designs. We have dramatically changed the way we build our yachts and the way in which they are propelled. Traditional values such as fine craftsmanship and great looks remain, as our owners have come to expect, but below the surface things are state-of-the-art. In our fiberglass shop we have changed infusion molding. It is greener in the sense that it uses considerably less resin and cleaner in that the emissions levels are much lower. It's lighter because we use less resin and that allows the hull to run faster and use less fuel. Infusion differs from traditional hand lay-up in that all materials are loaded dry into the mold in

a stack, the stack is then covered with a plastic bag and resin is infused into the stack. This creates a stronger part with higher glass to resin ratios. With Zeus Pod everything has changed and nothing remains the same. The smaller engines using vectored thrust propel the boat at higher speeds using less fuel. And when maneuvering in tight spaces a joy stick makes child's play of docking.

Additional features and options

FREEDOM LIFT

SHURSHADE ELECTRIC COCKPIT COVER

ELECTRIC SUN/MOON ROOF

TRACVISION TV RECEIVER

COCKPIT GRILL

ICE MAKER

Disclaimer The Company offers the details of this vessel in good faith but cannot guarantee or warrant the accuracy of this information nor warrant the condition of the vessel. A buyer should instruct his agents, or his surveyors, to investigate such details as the buyer desires validated. This vessel is offered subject to prior sale, price change, or withdrawal without notice.

PRESENTED BY

PETE DIERKS

CELL 410-200-0116

OFFICE 410-226-0100 x503

pdierks@dimillos.com

