

2003 Mainship 30 Pilot Express **\$89,000**



The Mainship Pilot 30 is a classy cruiser with a DownEast profile and a well thoughtout cabin. She has excellent visibility from the raised helm, good engine access. She is built with a high degree of craftsmanship and provides a superior fit and finish. Upgraded Yanmar 315 with just over 430 hours, and a Next Gen 3.5KW Generator with only 23 hours, This spotless Yacht can be seen in the water in Portland Maine.

BASIC INFORMATION

Manufacturer:	Mainship	Model:	30 Pilot Express
Year:	2003	Category:	Power
Condition:	Used	Location:	Freeport, US
Vessel Name:	2003 Mainship Pilot 30	Hull Material:	Fiberglass
Designer:	Mainship Design Team		

DIMENSIONS & WEIGHT

Length:	30 ft	Beam:	10.25 ft
Draft - max:	2.5 ft	Bridge Clearance:	8 ft

ENGINE

Make:	Yanmar	Model:	6LPA-STP
Engine(s):	1	Hours:	436
Cruise Speed:	12 kn	Engine Type:	Inboard
Drive Type:	Direct	Fuel Type:	diesel

Horsepower:

315 horsepower

Max Speed:

23 kn

TANK CAPACITIES

Fuel Tank:

175 gallon - 1 tank(s)

Fresh Water Tank:

40 gallon - 1 tank(s)

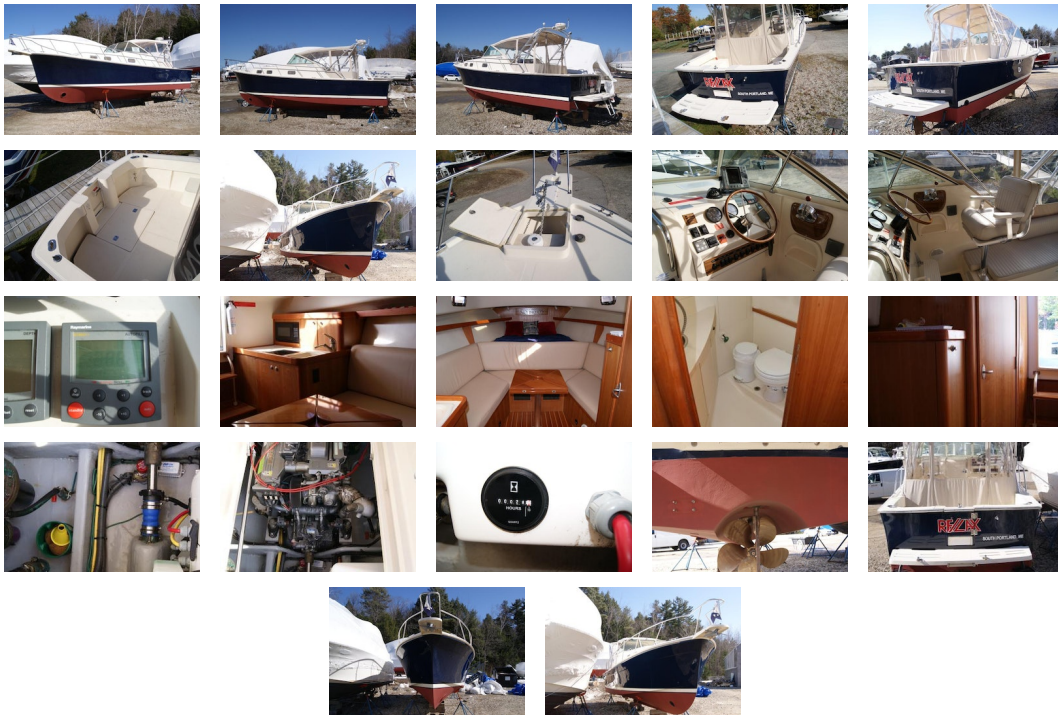
Holding Tank:

13 gallon - 1 tank(s)

ACCOMODATIONS

Total Heads:

1



Disclaimer The Company offers the details of this vessel in good faith but cannot guarantee or warrant the accuracy of this information nor warrant the condition of the vessel. A buyer should instruct his agents, or his surveyors, to investigate such details as the buyer desires validated. This vessel is offered subject to prior sale, price change, or withdrawal without notice.

Dimensions Displacement: 10,000

Engines Total Power: 315 HP Cruising Speed: 18-19 knots

Tanks Fuel: 175 Fresh Water: 40 Holding: 14

Accommodations

- Forward cabin center-island berth (convertible)
- Ultra-leather dinette seating for 4 people in comfort
- Enclosed head with fully molded compartment
- Open bridgedeck area with two captain's chairs & two long bench settees
- Open cockpit layout with transom door
- Walk-around side decks for access to bow fore deck
- Fully equipped, functional galley

Galley/Head

- **Galley**
- Single ceramic cooktop
- Single bowl sink with hot/cold water
- Microwave
- Top-load AC/DC refrigerator
- Above & below counter storage cabinets
- Opening portlight for ventilation
- **Head**
- Enclosed head
- Electric toilet
- Holding tank
- Macerator
- Deck pump-out
- Mirror and vanity storage
- Molded compartment
- Shower sump pump

Raymarine Electronics

- Raymarine RL70CRC Radar/Chart Plotter
- Raymarine 2KW Radar Dome
- Raymarine ST-6001 Auto-Pilot
- Raymarine ST60 Tri-Data w/bronze thru-hull transducer
- Raymarine 215 VHF Radio
- Raystar 120 GPS w/WAAS Receiver
- C-Map NT card

Electrical

- Dedicated starting batteries
- AC/DC distribution panel
- 30A shore power service w/ 50ft. cord
- 30Amp battery charger
- Reverse polarity indicator
- Hot water heater
- Bow thruster
- Windlass
- Radar arch courtesy dome lights
- Cockpit halogen spreader lights

Mechanical

- Dripless shaft log
- Internal sea strainer
- Oil X-Changer system
- Raw water washdown
- Water monitor
- Hydraulic steering
- Seacocks on underwater thru-hull fittings

Hull, Deck and Cockpit

- Awlgrippped Flag Blue hull
- Antique white decks
- All stainless steel bow rails, hatches & port lights
- Stainless steel cleats - bow, stern and spring
- Stainless steel deck fills - fuel, water and waste
- Raw water washdown
- Custom "Linen" bimini with 3-side enclosure
- Swim platform w/stainless steel swim ladder
- Center venting windshield with wipers

Additional Equipment

- Next Gen 3.5kw Genset w/ 23 hours
- Reverse cycle AC/ and Heat
- Weaver platform davits for dinghy
- Lines
- Fenders

- CC Safety Package

Disclaimer The company offers the details of this vessel in good faith but cannot guarantee or warrant the accuracy of this information nor warrant the condition of the vessel. A buyer should instruct his agents, or his surveyors, to investigate such details as the buyer desires validated. This vessel is offered subject to prior sale, price change, or withdrawal without notice.

