

2005 True North 33 \$269,000



New listing, this 2005 True North 33 has been offered to the market due to the owner moving up to a larger downeast express cruiser. Quick, seaworthy, and rugged built, she is capable of taking you to your favorite cruising grounds while functioning as a platform for leisure & water sport activities. Her design, inspired by the popular New England lobster boat, is as practical as it is attractive. Every detail was given careful thought to create the most perfect purpose of use.

With that said, Respite is a true example of a well cared for and heavily outfitted 33. With only 170 hours on her Yanmar 440hp diesel, she will cruise comfortably in the 20+ knot range and max out near 27 knots. You will enjoy the climate-controlled pilothouse while underway with the air/heat system provided. Her galley-up layout with opposite convertible dinette creates a place for all to enjoy, either at the dock or underway. Cruise with friends and/or take the whole family, there is plenty of comfortable space to share. Sporting her freshly AWLGRIP flag blue hull, she is certainly a head-turner in any harbor. Other great features include; Raymarine C120 chart/radar, autopilot, KVH broadband for email, a/c & heat, generator, bow thruster, hardback enclosure with double sliding doors, cockpit bimini top, teak & holly soles, bow rail extension, cherry wood package and more.

For a complete details & a listing with a CD slideshow, please contact the listing broker below.

BASIC INFORMATION

Manufacturer:	True North	Model:	33
Year:	2005	Category:	Power
Condition:	Used	Location:	Portland, US
Vessel Name:	Respite	Hull Material:	Fiberglass
Designer:	Pearson Yachts Design Team		

DIMENSIONS & WEIGHT

Length:	33 ft	Beam:	12.33 ft
----------------	-------	--------------	----------

Draft - max: 3.33 ft

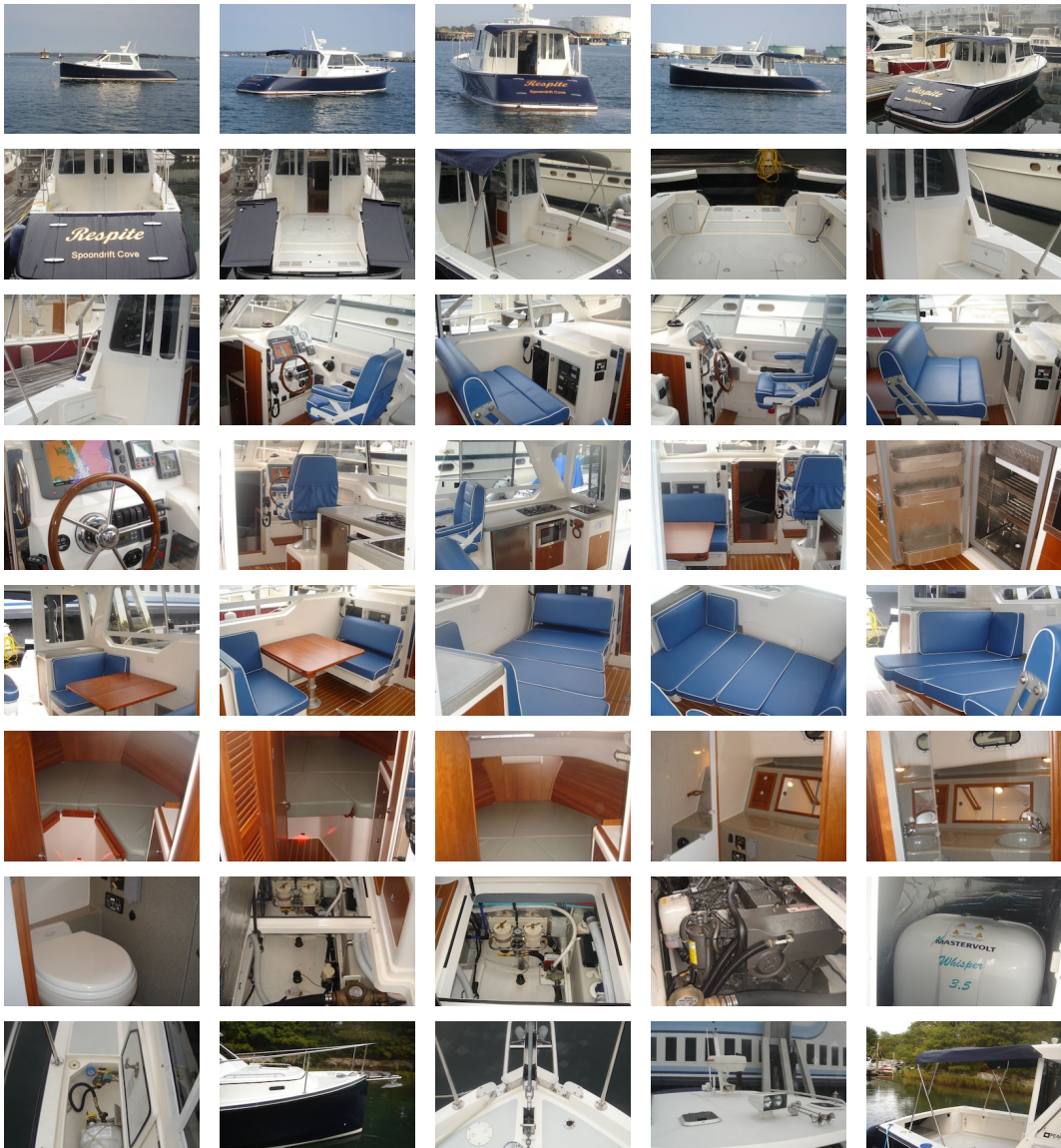
ENGINE

Make:	Yanmar	Model:	6LY2A-STP
Engine(s):	1	Hours:	170
Fuel Type:	diesel	Max Speed:	27 kn

TANK CAPACITIES

Fuel Tank:	200 gallon - 1 tank(s)	Fresh Water Tank:	80 gallon - 1 tank(s)
Holding Tank:	20 gallon - 1 tank(s)		

ACCOMODATIONS





Engines Total Power: 440hp Cruising Speed: 20+ knots

Accommodations

- Forward cabin Vee-berth with hanging locker
- Head to port with toilet, shower, vanity and storage
- Galley-up to starboard, fully functional with ample storage compartments
- Captain chair, fully adjustable, with complete navigational electronics and DC switching
- Mate seat, double-wide & fully adjustable, with chart table, storage and AC/DC panel
- Convertible dinette to port with sleeping accommodations for two & dining for up to four people
- Hardback enclosure with double sliding doors
- Opening cockpit, flush access to main cabin, with large double transom opening doors for dinghy storage and/or water sports activities
- Wide walk-around decks for easy access to bow
- Extended bow/safety rails for added security
- Hardtop model with large opening cabin windows with screens

Galley/Head

- Galley-Up
- L-shaped galley to starboard integrally molded with deck contrasting color stone-patterned gelcoat counter
- Deep stainless steel sink with overboard drain
- Hot & cold pressure faucet with pivoting spigot
- Frigoboat 12V DC refrigeration system with front opening stainless steel refrigerator cabinet mounted under counter
- LGP counter top range, LGP system fitted with electric solenoid shut off
- Microwave oven
- Drawers & storage lockers
- Opening windows with exterior window shades & screens
- 120V AC outlets
- Head
- Enclosed head compartment
- All surfaces molded fiberglass for low maintenance
- Vacuflush marine toilet
- Holding tank with macerator & deck pump-out
- Waste tank level monitoring system
- Molded sink in vanity
- Combination shower & sink faucet
- 120V AC outlet
- 12V DC outlet

Electronics

- Raymarine C120 color chartplotter/radar
- Raymarine ST6001 SmartPilot autopilot
- S2G Core Pack course computer
- Raystar 125 GPS receiver
- 4kW radome scanner
- Raymarine ST60 Depth
- Standard Horizon VHF with Ram+ mic
- Second Standard Horizon VHF Ram+ mic
- 4ft. VHF digital antenna
- KVH Tracnet mobile internet receiver

Electrical

- Xantrex Freedom Marine 2500 inverter/charger
- Mastervolt Whisper 3.0kW generator with sound shield
- Electronic engine control
- Custom AC & DC electrical distribution system

- Dual 120V AC, 30amp shore power service with (2) 50' shore cords
- Separate house & start 12V DC battery system with on/off switches
- (4) 120V AC duplex outlets, ground fault (GFI) protected
- Galvanic isolator
- (3) 12V DC bilge pumps with automatic/manual switches
- Navigational lights - port & starboard lights, white all-around combination mast & anchor light

Hull/Deck

- AWLGRIP flag blue hull (new 2006)
- Vinylster barrier/skin coat with ISO/NPG gelcoat
- SCRIMP hull & deck using End-Grain Balsa construction and high strength multi-axial glass reinforcements
- Molded interior structural liner for forward accommodations and engine space
- Heavy-duty black rub rail thru-bolted with stainless steel insert striker
- (4) Aluminum deck hatches with screens
- (4) Aluminum oval opening ports
- (6) Stainless steel mooring/deck cleats
- Extended bow rails (custom option)
- (4) custom fabricated stainless steel handrails
- Dual trumpet horn
- Self-draining cockpit
- Telescopic swim ladder

Additional Equipment

- Bow thruster
- Air conditioning with reverse cycle heat, 16,000BTU
- Hardback enclosure
- Teak & holly soles
- Extended bow rails
- Reverso oil changer system
- Dual Racor Diesel Fuel/Water Separator system
- Kenwood CD/AM/FM stereo with Bose speakers & Sirius Ready
- Jabsco searchlight with remote control at helm
- Cockpit spotlight
- (3) Wipers with windshield washers
- Rudder angle indicator
- Cherry wood package
- Cockpit bimini top with stainless steel frame
- Exterior window shades & screens
- Cockpit shower
- Electric windlass with helm & foredeck controls
- Upgraded Ultra-Leather interior fabrics
- Hot water heater
- Docklines, fenders, fender covers
- Lifejackets

Comments Very clean, well maintained and easy to see. Contact our office and speak to the listing broker for complete details.

Disclaimer The Company offers the details of this vessel in good faith but cannot guarantee or warrant the accuracy of this information nor warrant the condition of the vessel. A buyer should instruct his agents, or his surveyors, to investigate such details as the buyer desires validated. This vessel is offered subject to prior sale, price change, or withdrawal without notice.

PRESENTED BY

PETER OUELLETTE

CELL 207-318-0626

OFFICE 207-773-7632 x285

peter@dimillos.com



