

## 2001 Mainship Pilot 34 \$175,500



The best equipment Pilot 34 and an exceptional offering to the downeast cruising market, this 2001 Mainship Pilot 34 powered by a single 350hp Yanmar with low, hours. Equipment list includes air/heat, 3.5kW generator, bow thruster, propane stove/oven, RL70CRC 7" Color Radar/Chart Plotter, ST60 Tridata, ST6001+ Autopilot, Ray 53 VHF, 2kW Radome, custom radar arch, sunbrella bimini with 3-sided enclosure, flag blue hull, oil changer system, internal sea strainers, dripless shaft log, Jabsco searchlight with remote, custom rod rack storage, four Lee stainless steel rod holders, and much more. Awesome layout and great condition...owner moving up. Sold originally by our yacht sales team and maintained by our wonderful service department. Compare the equipment list with other 34's on the market and you'll see why "Lady Eileen" is so special. Call today for the complete details. At our docks and ready for your personal visit.

### BASIC INFORMATION

<b>Manufacturer:</b>	Mainship	<b>Model:</b>	Pilot 34
<b>Year:</b>	2001	<b>Category:</b>	Power
<b>Condition:</b>	Used	<b>Location:</b>	Portland, US
<b>Vessel Name:</b>	Lady Eileen	<b>Hull Material:</b>	Fiberglass

### DIMENSIONS & WEIGHT

<b>Length:</b>	34 ft	<b>Beam:</b>	12.25 ft
<b>Draft - max:</b>	3.25 ft		

### ENGINE

<b>Make:</b>	Yanmar	<b>Model:</b>	6LYA-STP
<b>Engine(s):</b>	1	<b>Hours:</b>	100

**Cruise Speed:** 19 kn    **Fuel Type:** diesel  
**Max Speed:** 21 kn

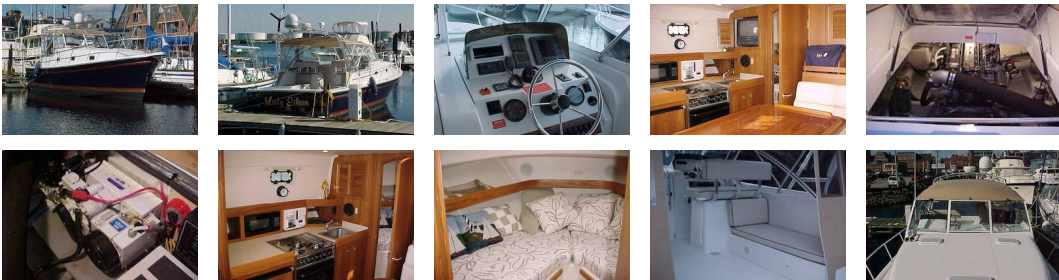
## TANK CAPACITIES

---

**Fuel Tank:** - tank(s)    **Fresh Water Tank:** - tank(s)  
**Holding Tank:** - tank(s)

## ACCOMODATIONS

---



**Engines** Total Power: 350

**Tanks** Fuel: 250 Fresh Water: 70 Holding: 30

### Accommodations

- Air Conditioning/Heat
- Forward V-berth
- V-berth Filler
- Two(2) Hanging Lockers
- Ports & Hatches in Forward Stateroom
- Reading Lights with lamp switches
- Large 12'3" Beam with Open Cockpit
- Transom Door Access
- Two(2) Steps Up to Bridgedeck
- Double Helm & Passenger Seats (both adjustable) with feet rests
- Convertible Dinette to Starboard
- Main Salon CD Stereo System
- Seperate Salon Lighting
- Ultra-leather Cushion
- Teak & Holly Soles
- Open Bridgedeck with large settees both port and starboard
- Cockpit Ice Cooler with Overboard drains
- 13" TV/VCR Combo Set
- Galley to Port
- Head to Port

### Galley/Head

- Galley
- 3-Burner Propane Stove/Oven
- AC/DC Refrigerator
- GE Microwave Oven
- Coffee Maker
- Stainless Steel Sink
- Corian Counter Tops
- Ample Galley Storage
- Head
- Full Molded Compartment

- Electric Toilet
- Macerator
- Holding Tank
- Sink Bowl
- Mirror
- Corian Counter Top

#### **Electronics**Raymarine Electronics

- RL70CRC 7" Color Radar Chartplotter
- Radome 2kW
- ST60 Depth
- Bronze Thru-Hull Transducer
- ST6001+ Autopilot
- Ray 53 VHF
- 8ft. Antenna
- Raystar 120 WAAS/GPS

#### **Electrical**

- 3.5kW Next Generation Generator
- 110V/12V Distribution Panel
- 30A Boat Service
- 8D Starter Battery
- 12V Genset Battery
- Complete Color Coded Wire System

#### **Hull/Deck**

- Flag Blue Hull
- Sport White Decks

#### **Additional Equipment**

- Custom Radar Arch
- Four(4) Lee Rod Holders
- Custom Rod Rack Storage
- Reverso Oil Changer System
- Dripless Shaft Log
- Dual Trumpet Horn in lieu of standard horn
- Searchlight with remote control
- Internal Sea Strainers
- Custom Bimini w/ 3-Sided Enclosure
- Four(4) Stainless Steel Rocket Launchers
- Air Conditioning/Heat
- Teak & Holly Soles
- 6.0gal Hot Water Heater
- Bow Thruster
- Racor fuel filter

**Comments**"Lady Eileen" shows very well. Her amenities are heavy with all the options you can order direct from the factory. The current owner will be moving up into a larger boat this winter. She's extremely clean and has lots to offer. We sold the boat new and have cared for her through our great service department. Give us a call today...this Pilot 34 is one to see. Note: the TracVision G4 satellite is not included with the boat. The owner will be installing it on his next boat.

**Disclaimer**The Company offers the details of this vessel in good faith but cannot guarantee or warrant the accuracy of this information nor warrant the condition of the vessel. A buyer should instruct his agents, or his surveyors, to investigate such details as the buyer desires validated. This vessel is offered subject to prior sale, price change, or withdrawal without notice.

