

## 1994 Sabreline 36 Motoryacht **\$239,000**



A very popular SL36 Motoryacht with the preferred 3116 CATS, recently AWLGRIPPED hull (2002) and great equipment. Over the past 10 years Pannekoek has had an open check book policy and she's been lightly cruised. The engines only have 536 original hours and they are immaculate. The equipment is very extensive with many extra's such as a new 9' Avon 280 RIB(2004), Weaver snap davits, Guest searchlight, windlass, trawler style mast & boom, 5kW Westerbeke genset, center island double berth in aft cabin, 16,000 BTU air conditioning w/ heat, oil changer, Spurs, bimini, canvas bridge covers, fresh bottom paint Micron CSC, New custom ultrasuade upholstery (2004), weather cloths, New Northstar electronics (2004)and more. Please call one of our experienced brokers to learn more about this wonderful Sabreline. We believe she could be the nicest Sabreline 36 M/Y on the market today. Recent survey (2004) available to review.

### BASIC INFORMATION

<b>Manufacturer:</b>	Sabreline	<b>Model:</b>	36 Motoryacht
<b>Year:</b>	1994	<b>Category:</b>	Power
<b>Condition:</b>	Used	<b>Location:</b>	Portland, US
<b>Vessel Name:</b>	Pannekoek	<b>Hull Material:</b>	Fiberglass
<b>Designer:</b>	Sabre Design Team		

### DIMENSIONS & WEIGHT

<b>Length:</b>	36 ft	<b>Beam:</b>	12.5 ft
<b>Draft - max:</b>	4.25 ft	<b>Bridge Clearance:</b>	18.83 ft

### ENGINE

<b>Make:</b>	Caterpillar	<b>Model:</b>	3116
--------------	-------------	---------------	------

**Engine(s):** 2      **Hours:** 536  
**Cruise Speed:** 19 kn      **Fuel Type:** diesel

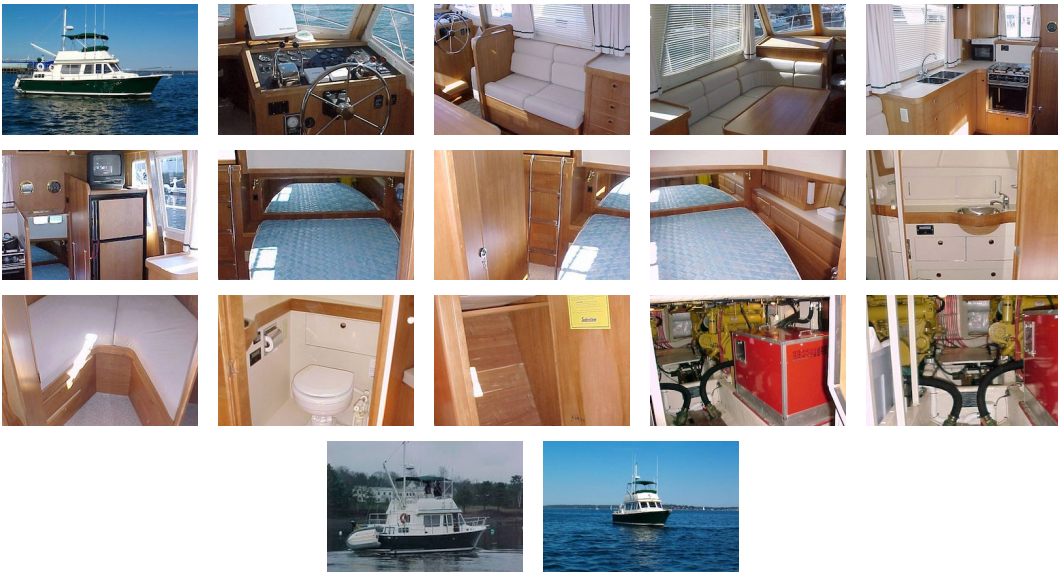
## TANK CAPACITIES

---

**Fuel Tank:** - tank(s)      **Fresh Water Tank:** - tank(s)  
**Holding Tank:** - tank(s)

## ACCOMODATIONS

---



**Dimensions** Displacement: 20,000

**Engines** Total Power: 300 Max Speed: 23-24 knots

**Tanks** Fuel: 300 Fresh Water: 225 Holding: 55

### Main Salon

- L-shaped settee in main salon converts to double berth
- Hi-Lo yacht table
- Port & starboard locker storage under settee
- Bar w/ bottle storage
- Helmsman's fold-away seat w/ backrest
- Teak & holly soles (varnished)
- Chart table w/ chart storage locker
- 3 sliding screened windows
- Side deck access doors, port & starboard w/ locks
- Sound deadening headliner panels
- Mini blinds on side windows
- Custom curtains in main salon
- Custom Ultra-Suede upholstery (New 2004)
- TV/VCR w/ remote controls

### Forward Stateroom

- Spacious V-berth w/ 5" cushions and filler

- Drawers and storage lockers under berth
- Upper shelves w/ storage behind
- Upper storage lockers w/ teak tambour doors
- Vinyl covered ceiling
- Hanging locker w/ door
- Bi-fold door to main salon

#### **Aft Stateroom**

- Island double berth w/ queen sized bed
- Drawers and storage locker
- Hanging locker
- Bi-fold door to main salon
- Valance lighting
- Built-in vanity mirror w/ lighting
- Removable ladder to companionway hatch

#### **Galley**

- Spacious formica galley counter
- Double stainless steel sink
- Built-in waste basket
- Wall mounted storage cabinet
- Norcold refrigerator/freezer 12V/110V
- LPG gas range w/ three burners & oven(never used)
- LPG control panel
- Drawers & storage lockers below counter

#### **Electronics**

- (2) Northstar 6000i 10.4" Color Chartplotter-upper & lower helm (New 2004)
- Northstar 4kw Radar 24" W/Dome (New 2004)
- Northstar 600W Echo Sounder (New 2004)
- AutoHelm ST50 Tridata
- AutoHelm ST6000 AP with over-lay
- Northstar GPS on Bridge(back-up)
- (2) Standard Horizon VHF-upper & lower helm
- Foghorn and Hailer
- (2) KVH Azimuth 1000 Electric Compass-upper & lower helm

#### **Electrical Systems**

- 5kW Westerbeke Generator
- 40 Amp Promariner Battery Charger
- Additional Trickle Charger, Genset Battery
- 30A AC shore power service with shore cord
- All galley & head outlets are GFI protected
- Illuminated main distribution panel
- Battery condition meter gauge
- 12V lighting system 2-way switch controlled at each stairway
- Engine battery switch in aft cabin

#### **Additional Equipment**

- Avon 2.8 Rib (9'1"), 4 person (New 2004)
- Snap Davits for Inflatable
- Trawler Style Mast and Boom w/un-used sail
- Guest Spotlight Wide Beam Spotlight on Bridge
- 4 Fenders with Fender Covers
- Life Jackets
- Micron CSC Black Bottom Paint
- TV/VCR
- Stereo
- 16000 BTU A/C Heat
- Hot and Cold Transom Shower
- VRC 1200 Windlass
- Salt Water Washdown
- 35# CQR Anchor, 150' Hightest Chain
- Oil Change System
- Spurs on Shaft
- Bimini, Bridge Cover and Extension

- Console and Seat Covers
- Weather Cloths, Port and Sboard, Bridge.
- New cushions on the bridge (2004)

**Comments** Last season the original owner's traded Pannekoek towards a new 47' Sabreline. The current owner's purchased her with the hopes of cruising her around the Maine Islands, however retirement has not gone as planned and she is now back on the market. Pannekoek has always had the best of care with an "open check book policy" when it came to service and up-dating. Recent up-dates include: New Northstar Electronics, New Ultra-Suede Interior(to replace the like new tweed Int.), New Avon RIB and the list goes on.

**Disclaimer** This company offers the details of this vessel in good faith but cannot guarantee or warrant the accuracy of this information nor warrant the condition of the vessel. A buyer should instruct his agents, or his surveyors, to investigate such details as the buyer desires validated. This vessel is offered subject to prior sale, price change, or withdrawal without notice.

PRESENTED BY

**SCOTT MACLEAN**

CELL 207-318-0627

OFFICE 207-773-7632 x289

scott@dimillos.com

