

2002 Mako Center Console **\$27,900**



One owner boat, in the water and ready to go.

BASIC INFORMATION

Manufacturer:	Mako	Model:	Center Console
Year:	2002	Category:	Power
Condition:	Used	Location:	Freeport, US
Hull Material:	Fiberglass		

DIMENSIONS & WEIGHT

Length:	23 ft	Beam:	8.5 ft
Draft - max:	1.17 ft		

ENGINE

Make:	Mercury	Model:	EFI
Engine(s):	1	Hours:	177
Fuel Type:	unleaded		

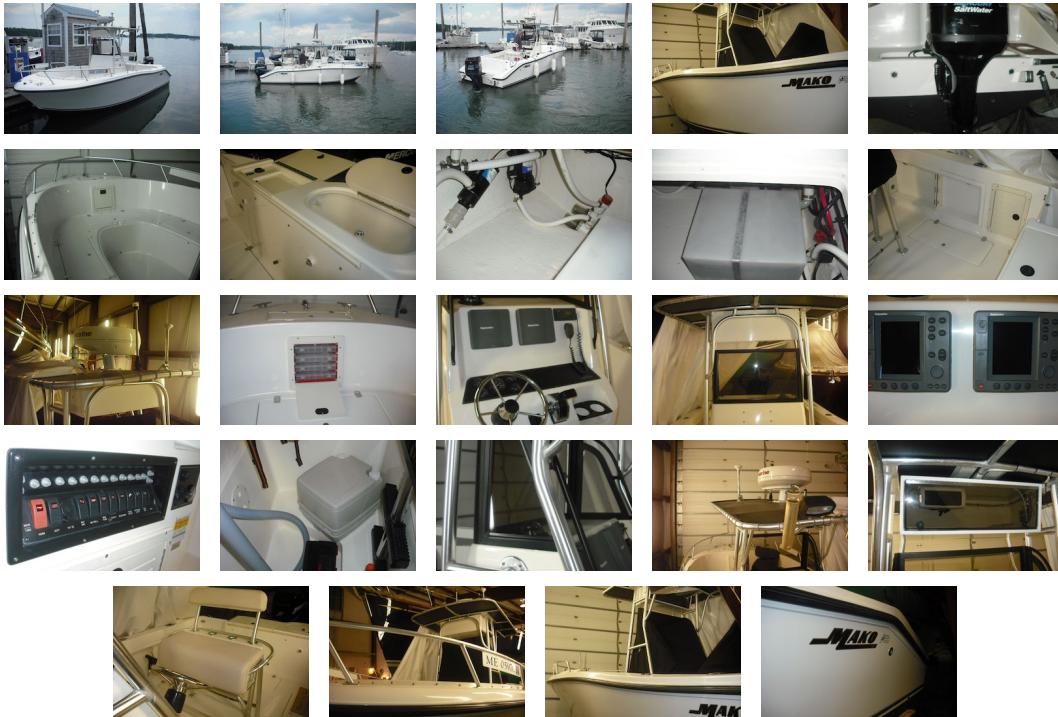
TANK CAPACITIES

Fuel Tank:	- tank(s)	Fresh Water Tank:	- tank(s)
-------------------	-----------	--------------------------	-----------

Holding Tank:

- tank(s)

ACCOMODATIONS



Dimensions

Displacement: 3150

Engines

Total Power: 250 Cruising Speed: 30 Max Speed: 40

Tanks

Fuel: 150 Fresh Water: 9 Holding: 0

Accommodations

- T-top with Black lace up canvas
- rocket launchers
- Aluminum bow rail
- SS Cleats Hydraulic steering
- Live well
- Bait prep station
- Swim ladder with storage
- Micron CSC bottom paint/ recoated every spring
- SS 3 Blade prop

Electronics

- 2 RL70 Raymarine
- GPS
- 2Kw Raydome
- Ray VHF
- Sony CD AM/FM stereo system
- Fishfinder

Electrical

- Lenco Marine Trim Tabs
- Fresh water Washdown, Port Side Aft
- 2 Group 24 Batteries
- Cockpit Lighting

Hull/Deck

- Fiberglass Deck & Swim Platform
- Stainless Steel Cleats
- Danforth Anchor
- 20' Chain & 100' Rode
- Steel, Rubber Rub Rail
- Aluminum Bow Rails
- Armstrong Ladder
- Transom Door, Starboard Side
- Self Bailing Cockpit
- Delux Leaning Post With Back Rest
- Black Canvas/ leaning cover

Additional Equipment

- 12Rod Holders
- Built-In Livewell
- Bait Station
- Transom Door
- Tackle Center At Bow
- 5 Fish Boxes, 2 In Sole, 3 @ Bow
- Freshwater Washdown
- 4 Gold Tone Rocket Launchers
- 4 Rod holders in leaning post
- 4 rod holders in gunwales
- Center console cover
- porto- potti

Comments

- All cushions on the boat, have never been on the boat and are still in the original plastic
- Black canvas dodger is in new condition.

Disclaimer

The Company offers the details of this vessel in good faith but cannot guarantee or warrant the accuracy of this information nor warrant the condition of the vessel. A buyer should instruct his agents, or his surveyors, to investigate such details as the buyer desires validated. This vessel is offered subject to prior sale, price change, or withdrawal without notice.

