

1994 Black Watch 30 Hard Top Express **\$95,000**



New to market

Rare Custom Hard Top Express

more details coming soon

BASIC INFORMATION

Manufacturer:	Black Watch	Model:	30 Hard Top Express
Year:	1994	Category:	Power
Condition:	Used	Location:	Freeport, US
Hull Material:	Fiberglass		

DIMENSIONS & WEIGHT

Length:	30 ft	Beam:	10.92 ft
Dry Weight:	12,500 lb		

ENGINE

Make:	Crusader	Model:	Captainu0027s Choice 8.0 HO
Engine(s):	2	Hours:	450
Cruise Speed:	26 kn	Engine Type:	Inboard

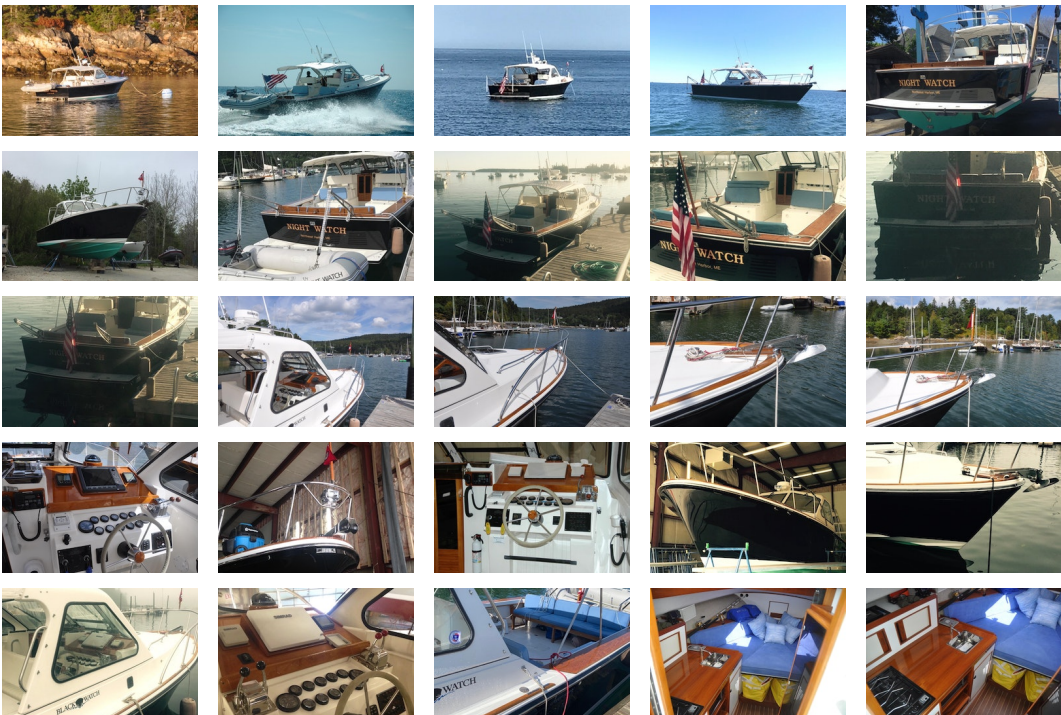
Drive Type: Direct **Fuel Type:** unleaded
Horsepower: 425 horsepower

TANK CAPACITIES

Fuel Tank: - tank(s) **Fresh Water Tank:** - tank(s)
Holding Tank: - tank(s)

ACCOMODATIONS

Total Heads: 1



Upgrades

Upgrades:

2020

New digital Simrad Radome
New rotary auto pilot instrument
New multi function instrument
Underwater lights
New stereo head unit
Both heat exchangers replaced

2019

New bow searchlight and platform fabricated

New hydraulic trim pump and switch/wiring

2016

New bow railing fabricated

New windlass installed and anchor hardware

Repowered 2009 Captains Choice 8.0 HO. Currently 450 hours

26 cruise. 34 wot

Maintained, serviced, and indoor storage at Hinckley, Southwest Harbor for the last 15 years

Disclaimer The Company offers the details of this vessel in good faith but cannot guarantee or warrant the accuracy of this information nor warrant the condition of the vessel. A buyer should instruct his agents, or his surveyors, to investigate such details as the buyer desires validated. This vessel is offered subject to prior sale, price change, or withdrawal without notice.

PRESENTED BY

TIM KENNEDY

CELL 207-632-0557

tim@dimillos.com

