

## 1949 Chris-Craft Racing Runabout **\$42,900**



WOW! photo's do not do this beauty justice!!

Miss Racine has just become available, She was bought from the original owner 1988. It then went through a complete and total restoration.

Once complete it hit the show circuit for the next four years. It won first in the St. John's River Cruise, first in Mount Dora. first in Clayton, New York, first in a show at Lake Winnepesaukee, and several other first & second place prizes in the Southern New England shows. She has won many 1st place trophy's over the years. Matching numbers boat, original MBL engine, more information & photos to come

- 3M-5200 Bottom
- Fully restored by RWS marine Restoration in New Milford, CT
- Matching single axle trailer
- Custom fire suppression system
- Float stored
- Garage stored

### BASIC INFORMATION

<b>Manufacturer:</b>	Chris-Craft	<b>Model:</b>	Racing Runabout
<b>Year:</b>	1949	<b>Category:</b>	Power
<b>Condition:</b>	Used	<b>Location:</b>	Raymond, US
<b>Vessel Name:</b>	Miss Racine	<b>Hull Material:</b>	Wood

### DIMENSIONS & WEIGHT

<b>Length:</b>	19 ft	<b>Beam:</b>	6.08 ft
----------------	-------	--------------	---------

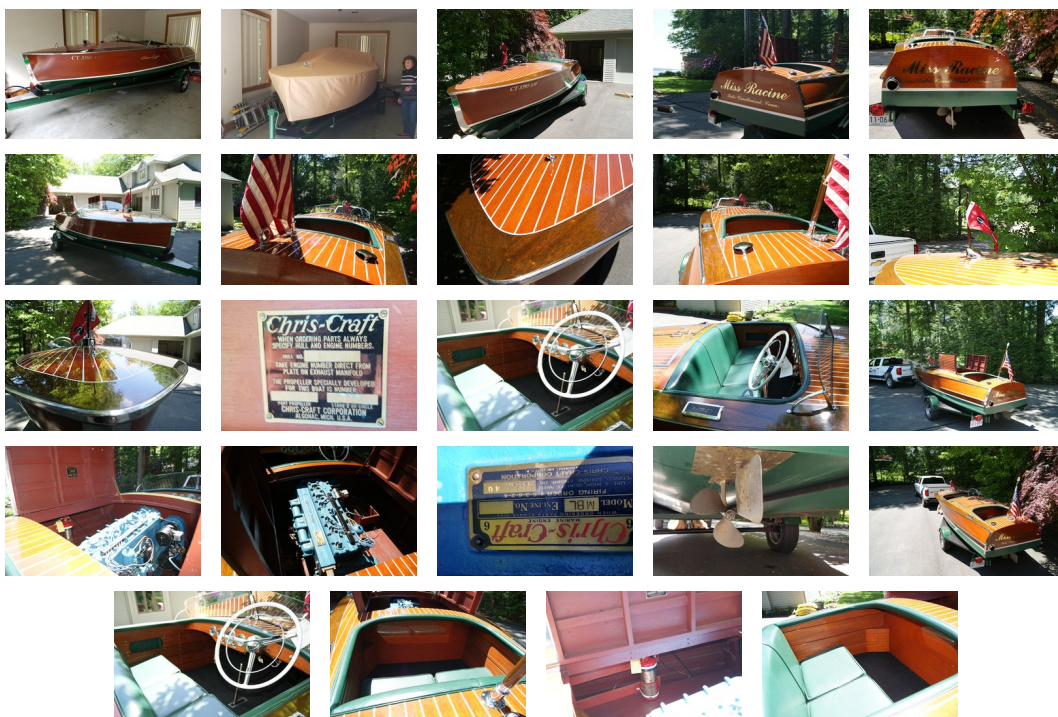
## ENGINE

<b>Make:</b>	Chris-craft	<b>Model:</b>	MBL
<b>Engine(s):</b>	1	<b>Engine Type:</b>	Inboard
<b>Fuel Type:</b>	unleaded	<b>Horsepower:</b>	158 horsepower

## TANK CAPACITIES

<b>Fuel Tank:</b>	- tank(s)	<b>Fresh Water Tank:</b>	- tank(s)
<b>Holding Tank:</b>	- tank(s)		

## ACCOMODATIONS



**Disclaimer** The Company offers the details of this vessel in good faith but cannot guarantee or warrant the accuracy of this information nor warrant the condition of the vessel. A buyer should instruct his agents, or his surveyors, to investigate such details as the buyer desires validated. This vessel is offered subject to prior sale, price change, or withdrawal without notice.

PRESENTED BY

**JIM MCAULIFFE**

CELL 207-252-2737

OFFICE 207-865-0432 x300

[jim@dimillos.com](mailto:jim@dimillos.com)

