

2015 Back Cove 37 Express \$489,000



One owner. Sold and serviced by DiMillo's Yacht Sales and stored inside our heated building each winter since new. Ready to go. Engine, transmission, and gen-set just serviced. Fresh bottom paint and varnish as well.

Continuing with the same practical features, usability and low maintenance, which have built the popularity of the Back Cove brand since its inception. In the master stateroom there is an very large island berth for ease of egress, and for stowage of owner's gear. Also, you will find many lockers, cabinets and drawers provided.

To starboard aft of the master is a full guest cabin with double berth and plenty of storage. Opposite and to port is a large head unit with a separate stall shower. Between the lower and salon sole levels, there is a mid-galley fully equipped with a (2) drawer refrigerator, a freezer, microwave and deep stainless steel sink as well as many drawers and lockers for galley storage. Large windows overhead give this galley ample visibility and light.

In the salon are twin Stidd seats for helmsman and crew. Aft of the helm seat an L-shaped settee and to port a shorter settee. A large inlaid table offers a comfortable and elegant space for dining with crew and guests. Large windows provide ample light and air while overhead a large sliding pilot hatch allows air to flow through this space.

Opening to the cockpit are large swing doors which completely open up the salon to the cockpit. And the transom seating will provide the comfort you desire for socializing with family and friends.

Engine access is extraordinary, as the salon floor raises to expose the yacht's mechanical systems and engine space.

And of course, you will find the usual great features Back Cove is known for; wide walk-around decks, ample anchor locker storage space, beautifully molded parts, smart electrical & mechanical systems, quiet running hull, economical burn rates plus much more.

BASIC INFORMATION

Manufacturer:	Back Cove	Model:	37 Express
Year:	2015	Category:	Power
Condition:	Used	Location:	Freeport, US
Vessel Name:	Rocky Top	Hull Material:	Fiberglass

Designer: Back Cove Yachts Design Team

DIMENSIONS & WEIGHT

Length: 37 ft **Beam:** 13.25 ft
Draft - max: 3.25 ft

ENGINE

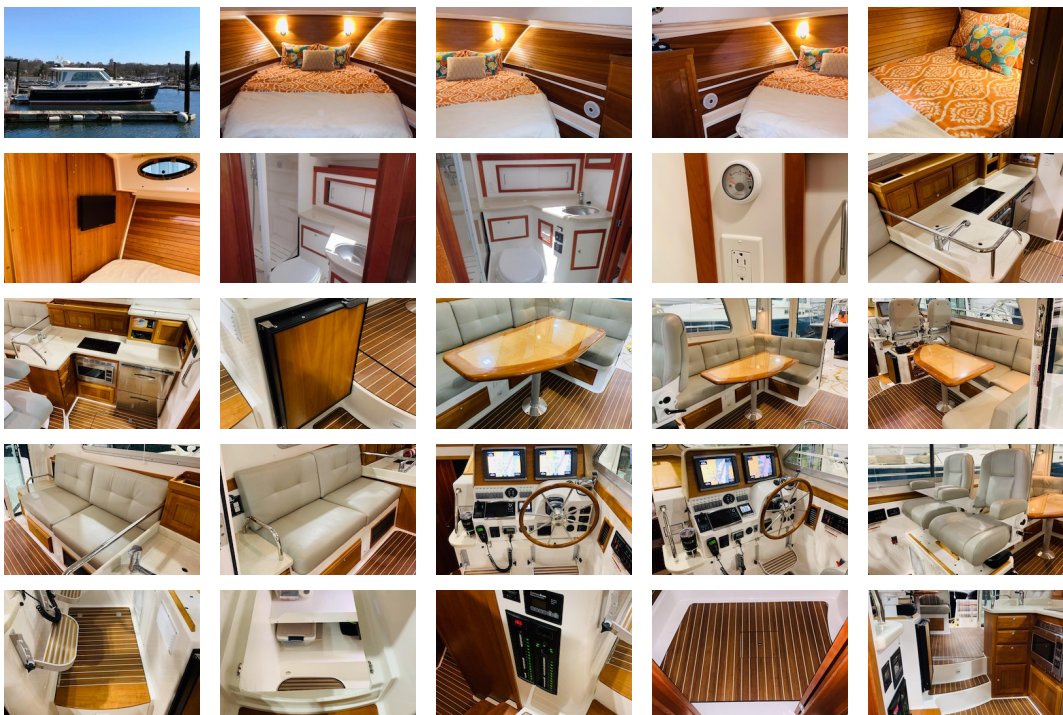
Make: Cummins **Model:** QSC 8.3L 600hp
Engine(s): 1 **Hours:** 135
Cruise Speed: 25 kn **Range:** 374 mi
Engine Type: Inboard **Drive Type:** Direct
Fuel Type: diesel **Horsepower:** 600 horsepower
Max Speed: 28 kn

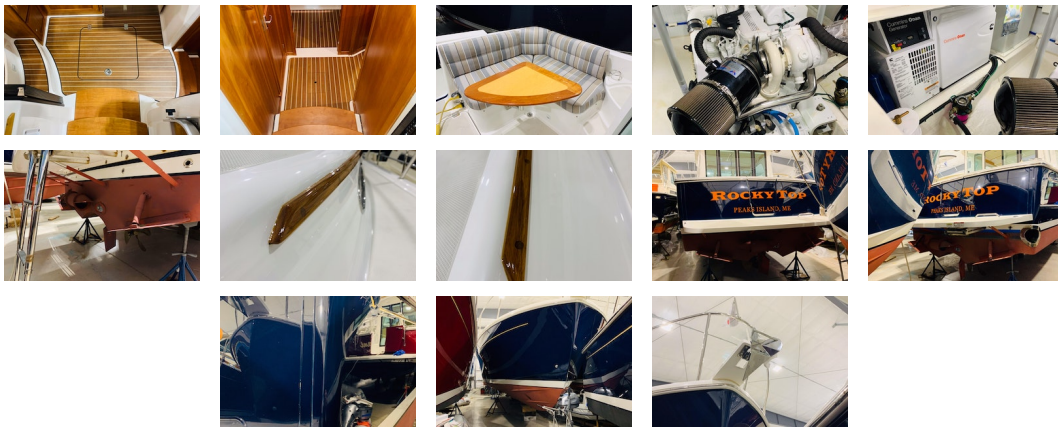
TANK CAPACITIES

Fuel Tank: 300 gallon - 1 tank(s) **Fresh Water Tank:** 120 gallon - 1 tank(s)
Holding Tank: 50 gallon - 1 tank(s)

ACCOMODATIONS

Total Cabins: 2 **Total Berths:** 1
Total Heads: 1





Accommodations

- **Salon Seating Area**
- L-Settee with Hi/Low table converts to double berth
- Double settee opposite with molded end table
- Flip-down LCD TV w/ DVD
- Large engine room hatch opens by electro-hydraulic actuator
- Premium flooring material
- Molded headliner with padded panel inserts
- XM friendly stereo system w/ CD & interior/cockpit speakers w/ wired remote
- **Master Stateroom**
- Cherry interior on molded composite hull liner
- High pressure laminate "teak-n-holly" cabin sole
- Molded headliner with padded panel inserts
- Island queen centerline berth forward with drawers & storage below
- Shelves outboard with cherry fiddles
- Cherry hull ceiling
- Cedar lined hanging locker with shelf
- Reading lights
- Multi drawer dresser with dovetailed drawers
- LED overhead lighting
- **Guest Stateroom**
- Molded headliner with padded panel inserts
- Wide double berth with drawers under
- Night stand with storage
- Outboard storage shelves over berth
- Cherry headboard with reading lights
- Cherry hull ceiling

Galley/Head

- Half Down Galley
- Surface mount cook-top
- AC/DC drawer-type fridge/freezer compartment
- Galley sink with single lever faucet & drop in cover
- Solid surface countertop
- Under-counter convection microwave
- Drawers and doors below counter
- Molded lighting soffit over countertop
- Premium flooring material
- Head
- Oversized head with separate shower stall
- Built-in vanity with sink
- Solid surface countertop
- Full length mirror on door
- Single lever faucet and soap dispenser
- Shower drain sump pump system
- Molded seat in shower stall with storage beneath and locker outboard
- Fresh water electric MSD with holding tank
- Waste tank monitor
- Macerator for overboard discharge
- Stainless steel opening port with screen
- 12V Vent Fan

Electrical

- Electrical Systems
- AC and DC control panels with polarity indicator

- DC system battery management switching
- DC breakers for electronics
- 110V AC 30 amp shore power with 50 foot cord set
- Emergency parallel switch
- Galvanic isolator
- Battery Charger, 50 amp
- (2) 4D AGM house battery
- (3) Group 31 engine start battery
- (3) 12VDC automatic bilge pumps
- 12V outlet at helm
- Bonding system with zinc anode
- Cockpit courtesy lights
- GFI protected 110V circuits
- (3) windshield wipers with washer system
- Compass, illuminated
- Running lights

Hull/Deck

- **Hull**
- Vacuum infused FRP construction
- Advanced prop pocket hull design
- Back Cove white iso-npg gelcoat
- Vinylester backup resin
- Vacuum bagged PVC core hull design
- Multiaxial E glass reinforcement
- Awlgrip boot top
- Molded cove stripe depression with "gold leaf" style stripe
- **Deck**
- Vacuum infused FRP construction
- Port & starboard molded steps leading to side & fore deck
- Teak accent stripe
- Back Cove white iso-npg gelcoat w/ graystone anti-skid on walking surfaces
- Multiaxial E glass reinforcement
- Lewmar hatch with screen in main cabin
- Lewmar hatch with screen over island berth
- Lewmar hatch with screen over head compartment
- Lewmar hatch with screen over guest stateroom
- Lewmar pilot hatches with screens/shades in hardtop
- (6) opening Port lights with screens
- Clear anodized aluminum windshield with center opening
- Trumpet horn on hardtop
- Anchor locker
- Molded Composite bow sprit w/ stainless steel anchor roller and windlass
- Mooring cleats w/ skene chocks forward, aft & spring line cleats
- Pop-up cleats at transom corners
- Custom 1 1/4" 316L stainless steel bow rail
- (2) Stidd 1200 series helm seats
- Swim platform and swim ladder
- Hot and cold cockpit shower
- Self bailing cockpit
- Transom Door
- Seat in cockpit with storage below

Mechanical

- **Mechanical Systems**
- Cummins QSB 5.9 600 hp electronic engine and marine gear (135 hrs)
- Electronic single lever engine control
- Digital engine control panel with alarms and hour meter
- Internal sea strainer
- Fuel Filter
- (3) Engine room lights
- 2.25" Aquamet shaft
- 4 Blade NiBrAl propeller
- Dripless shaft log
- Electric trim tabs with indicators
- 8" Exhaust with two stage horizontal muffler
- Teleflex hydraulic steering with tilt helm pump
- Stazo teak steering wheel
- Hot and Cold pressurized water (110V and engine heated)
- 11 gallon hot water heater with heat exchanger
- Bow thruster with joy stick control
- Marelon sea valves on underwater thru hulls
- Fireboy extinguisher system & carbon monoxide detector
- Macerator with overboard discharge
- 9.0 kw gen set Onan

- Reverse cycle heat and air in three zones

Navigation Equipment

- (2) Garmin 7212 Multi-Function Display Units
- Garmin 4Kw HD Radar
- Garmin Auto-Pilot
- Garmin Depth Sounder
- Garmin 300 VHF
- ACR Spot Light

Optional Equipment

- Upgraded 600hp Cummins (135hrs)
- Dark Blue Hull with White Boot Stripe
- Upgrade Interior Seating to Ultra-Leather
- Upgrade STIDD Seat to Ultra-Leather
- Removable Cockpit Table w/2 Brackets
- Variable Speed Bow and Stern Thruster
- Oil Changing System
- 1800 Watt Inverter
- Mast for Hardtop
- Saltwater Washdown Pump - Fore & Aft
- Additional Freezer Under Helm Sole
- Flat Screen TV/DVD - Master
- Flat Screen TV/DVD - Guest
- Ocean Air Shades on Side Windows
- Ocean Air Shades on Bi-Fold Salon Entry Doors
- Galley Refrigerator/Refrigerator in lieu of standard
- Freezer Under Helm Seat
- Custom Mattress - Master and Guest - Portland Mattress Makers
- Windshield Cover
- Cockpit Seat Covers
- Aft Cockpit Seat Cover
- Flag and Burgee Cover

Disclaimer The Company offers the details of this vessel in good faith but cannot guarantee or warrant the accuracy of this information nor warrant the condition of the vessel. A buyer should instruct his agents, or his surveyors, to investigate such details as the buyer desires validated. This vessel is offered subject to prior sale, price change, or withdrawal without notice.

PRESENTED BY

SCOTT MACLEAN

CELL 207-318-0627

OFFICE 207-773-7632 x289

scott@dimillos.com

