

## 2002 Mainship 430 Trawler **\$349,000**



New Listing; July 2006: This 2002 43' Mainship 430 Trawler is in immaculate condition and proves to be one the best deals on the market today! Powered by upgraded twin Yanmar 440hp diesel engines, this Trawler will cruise at 20 knots, topping out at speeds up to 22-23 knots. She offers an endless list of options, including: three-zone air conditioning/heat units, full canvas enclosure on the flybridge, 8.0Kw Kohler generator, full electronics package, and much more. "Family Affair," is the perfect vessel for entertaining guests providing two staterooms, two heads, a spacious salon, and plenty of space on the aft deck and flybridge seating areas. Don't let this one pass you by. Truly one of the nicest Mainships on the market! Contact us today for more details or a private showing.

### BASIC INFORMATION

|                      |               |                       |              |
|----------------------|---------------|-----------------------|--------------|
| <b>Manufacturer:</b> | Mainship      | <b>Model:</b>         | 430 Trawler  |
| <b>Year:</b>         | 2002          | <b>Category:</b>      | Power        |
| <b>Condition:</b>    | Used          | <b>Location:</b>      | Portland, US |
| <b>Vessel Name:</b>  | Family Affair | <b>Hull Material:</b> | Fiberglass   |

### DIMENSIONS & WEIGHT

|                     |         |                          |          |
|---------------------|---------|--------------------------|----------|
| <b>Length:</b>      | 43 ft   | <b>Beam:</b>             | 15.5 ft  |
| <b>Draft - max:</b> | 3.67 ft | <b>Bridge Clearance:</b> | 18.67 ft |

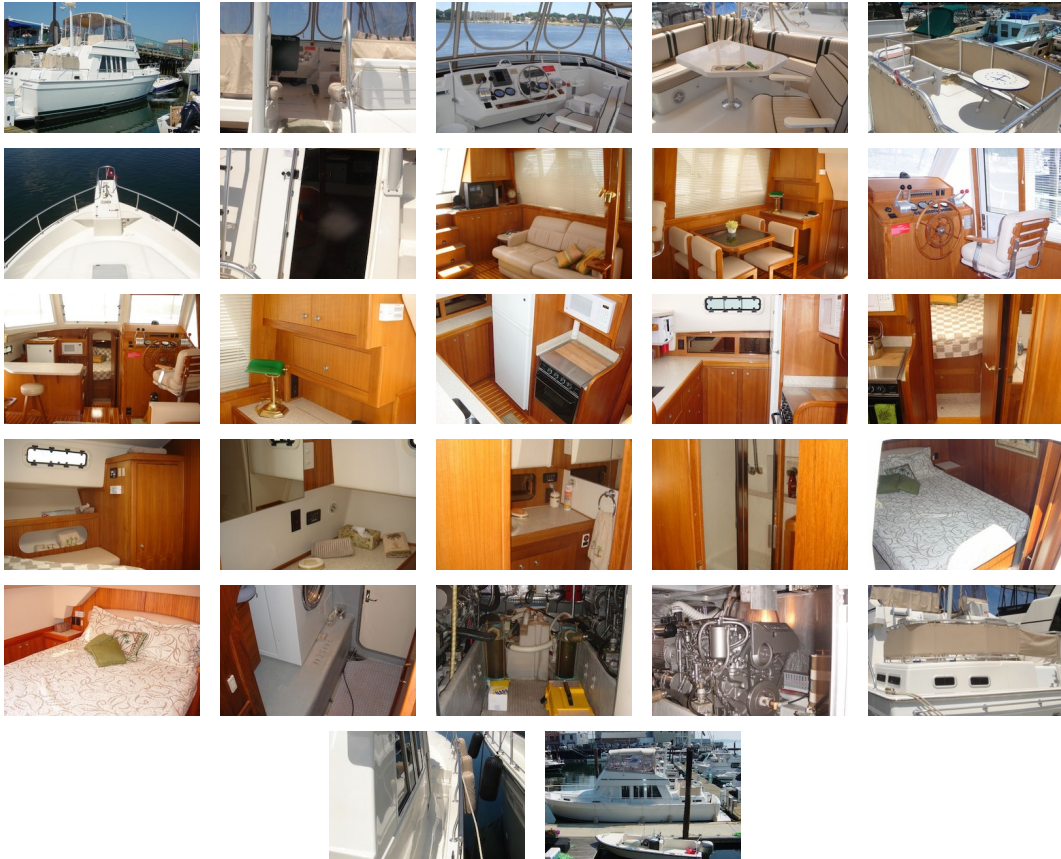
### ENGINE

|                   |             |                      |           |
|-------------------|-------------|----------------------|-----------|
| <b>Make:</b>      | Twin Yanmar | <b>Model:</b>        | 6LYA2-STP |
| <b>Engine(s):</b> | 2           | <b>Cruise Speed:</b> | 20 kn     |
| <b>Fuel Type:</b> | diesel      |                      |           |

## TANK CAPACITIES

**Fuel Tank:** - tank(s)    **Fresh Water Tank:** - tank(s)  
**Holding Tank:** - tank(s)

## ACCOMODATIONS



**Dimensions** Displacement: 36,000

**Engines** Total Power: 440 Max Speed: 22-23 knots

**Tanks** Fuel: 500 Fresh Water: 250 Holding: 50

### Bridge, Deck, and Cockpit

- Deck
- Stainless steel bow rail
- Cleats- bow, stern, and springs (forward and aft)
- Anchor locker w/chain and anchor
- Bow pulpit with anchor roller
- Stainless steel safety rails
- Venting center windshield and wipers (3)
- Spacious walkarounds
- Sliding door to salon - port and starboard
- Waste, water, and fuel fills on decks
- Water drains - port and starboard
- Courtesy lights around deck

- Non-skid deck surface
- Aft deck with stainless steel safety rails and room for six
- Steps to flybridge
- Sliding door to salon
- Flybridge
- Bridge seating for up to eight adults
- Flybridge dinette
- Captain's chair
- Courtesy lights
- Full control station
- Engine instrumentation - oil pressure, voltage, temperature, fuel and RPM gauges
- Compass
- Jensen CD/Radio w/4 speakers
- Cup holders (6)
- Canvas enclosure w/opening windows
- Cockpit
- Sliding door to aft stateroom
- Transom shower - hot and cold w/seperate fill
- Cockpit drains
- Transom door
- Swim platform w/storage in step and stainless steel ladder

### **Accommodations**

- Aft Stateroom
- Full island berth with storage below
- Dual night stands with storage
- Cabinet storage along wall
- Interior lighting
- Hanging locker
- Carpeted floor
- Screened portlights with shades (4)
- Matching interior fabrics - bedding and shades
- Entrance to private master head
- Cable outlet
- Airconditioning/Heat control unit
- Forward Stateroom
- Full island berth with under storage
- High intensity reading lights
- Hanging lockers (2)
- Cable outlet
- Bench seating - port and starboard
- Carpeted flooring
- Portlights with screens (2)
- Screened ceiling hatch
- Interior lighting
- Airconditioning/Heat control
- Salon
- Full control station w/Captain's chair
- Corian breakfast nook
- Teak and Holly sole
- Interior lighting
- Custom dining table w/seating for four
- Cornered desk with storage
- JVC TV w/Sony 5 disk changer and Yamaha Digital Cinema Receiver
- Cabinet storage
- Convertible Ultraleather sofa to double sleeper
- Access to AC/DC panel
- Wal-Vac unit
- Sliding windows with blinds
- Airconditioning/Heat control
- Stair access to aft deck
- Access to engine room under stairs leading to galley
- Ice maker

### **Head/Galley**

- Master Head
- Seperate stand/sit shower stall - hot and cold water
- Corian countertop
- Large sink with faucet - hot and cold water
- Under counter storage
- Electric head
- Mirrored cabinets
- Interior lighting
- GFCI outlet
- Forward Head

- Separate shower stall - hot and cold water
- Electric head
- Vanity counter with mirrored cabinets
- Large sink with stainless steel faucet - hot and cold water
- Under counter storage (2 cabinets, 3 drawers)
- Interior lighting
- Screened hatch and portlight
- GFCI outlet
- Galley
- Dual stainless steel sink with designer faucet- hot and cold
- Black & Decker coffee maker
- Corian countertop
- Large GE refrigerator/freezer
- 3 burner electric stove/oven
- Storage ( 5 cabinets, 6 drawers, 2 sliding cabinets)
- GFCI outlet

### **Electrical Equipment**

- AC and DC control panel
- 50 Amp shore power outlets - forward and aft
- 50ft., 50 Amp shore power cord
- Battery safety switch
- Circuit breakers - AC/DC
- Shore power breakers on exterior
- TV/Telephone connection - forward and aft
- Reversed polarity indicator
- Waste discharge pump
- Interior lights - 12V
- Electric bilge pumps - forward mid and aft
- Washer/Dryer
- Protech 4 battery charger
- Nav/anchor lights
- High intensity aft lights on radar mast
- 12V outlets (2)
- High water/Engine failure alarms - both stations
- Electric windlass and steering station controls

### **Mechanical**

- Twin Yanmar 440hp diesel engines
- Oil X-Changer
- Thru-hulls with underwater fittings
- Racor fuel filters
- Welded aluminum fuel tanks
- Hydraulic steering
- Bronze struts and rudders
- Fire extinguisher system
- Fresh water cooling on engines
- Hot and cold pressurized water
- Hydraulic trim tabs
- Sea strainers
- Stainless steel shafts
- Kohler 8.0 generator

### **Electronics**

- Flybridge
- Raytheon ST60 Tridata - Depth, Speed, Mileage
- Raymarine ST6001T Autopilot
- Raytheon RL70C Pathfinder Radar
- Raytheon Ray210 VHF

### **Additional equipment**

- Fire Extinguishers (3)
- Life Jackets
- PDF
- Docklines - bow, stern, and springs
- Fenders (4)

**Disclaimer**The Company offers the details of this vessel in good faith but cannot guarantee or warrant the accuracy of this information nor warrant the condition of the vessel. A buyer should instruct his agents, or his surveyors, to investigate such details as the buyer desires validated. This vessel is offered subject to prior sale, price change, or withdrawal without notice.

