

## 2005 Duffy Flybridge \$249,000



### BASIC INFORMATION

<b>Manufacturer:</b>	Duffy	<b>Model:</b>	Flybridge
<b>Year:</b>	2005	<b>Category:</b>	Power
<b>Condition:</b>	Used	<b>Location:</b>	Lower Hudson, US
<b>Hull Material:</b>	Fiberglass		

### DIMENSIONS & WEIGHT

<b>Length:</b>	37 ft	<b>Beam:</b>	13.42 ft
----------------	-------	--------------	----------

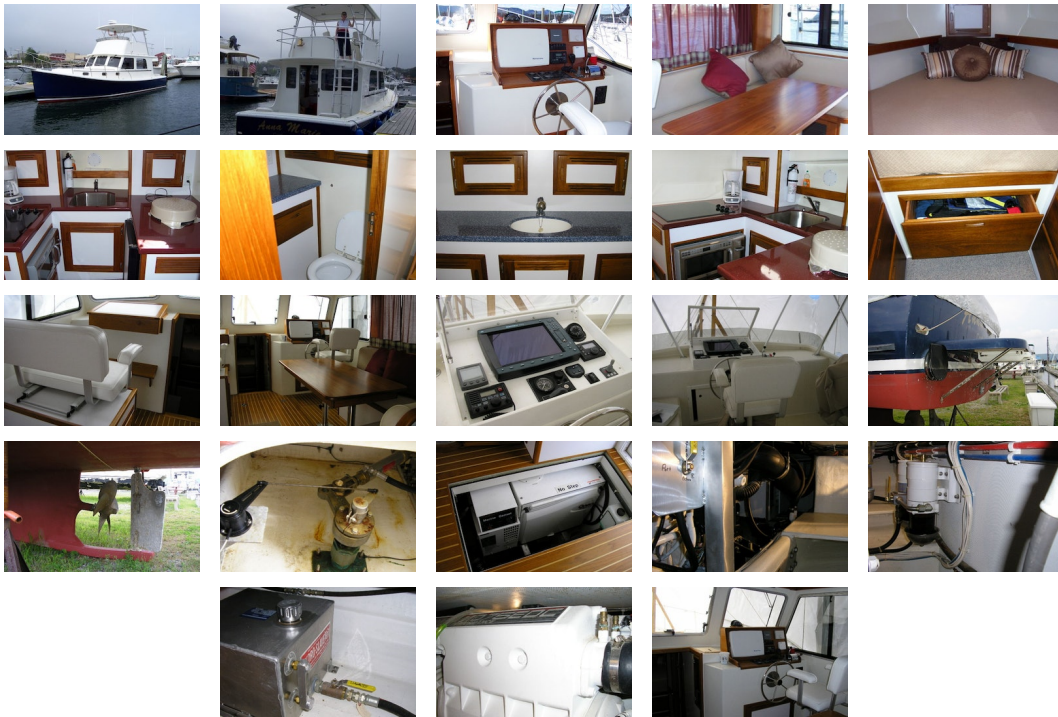
### ENGINE

<b>Make:</b>	Volvo	<b>Engine(s):</b>	1
<b>Hours:</b>	230	<b>Cruise Speed:</b>	18 kn
<b>Fuel Type:</b>	diesel	<b>Max Speed:</b>	20 kn

### TANK CAPACITIES

<b>Fuel Tank:</b>	- tank(s)	<b>Fresh Water Tank:</b>	- tank(s)
<b>Holding Tank:</b>	- tank(s)		

### ACCOMODATIONS



**Dimensions** Displacement: 20,000

**Engines** Total Power: 480

**Tanks** Fuel: 250 Fresh Water: 70

### Accommodations

- Double berth forward with temper pedic mattress and 6 drawers, HVAC, overhead hatch
- Large dinette with sleeper
- L-settee converts to bed
- Teak and Holly Sole
- HVAC
- Bose system
- Sliding windows
- Center open windshield
- Chart table
- passenger chair

### Galley/Head

- LG Microwave
- Euro Fera 3-burner electric stove
- SS Sink with hot and cold faucets
- SS ports
- Norcold Refrigerator/freezer
- Corian countertops
- 12V lighting
- Cabinets
- L-shaped dinette
- Head:
- Wet Head
- Raritan head
- Corian countertops
- Teak trim
- 12V lights

### Electronics

- Flybridge:

- Northstar 6000i 15"
- Raymarine Digital depth finder
- Icom VHF M505
- Side Power Thruster
- Simrad AP26
- Ritchie Compass
- Lower station:
- Same as Flybridge

#### **Electrical**

- 13Kw Onan generator-2 hrs
- 2-Zone air and heat
- Bow thruster
- 12v spotlight

#### **Hull/Deck**

- Flybridge
- Duel helm chairs
- Hard Top
- Fiberglass swim platform with ladder
- Navy Hull
- 5-blade H&H prop
- Windlass, rope and chain

#### **Engine room/Cockpit**

- Cockpit:
- 3 Freeman hatches
- 2-Gunwale Rod Holders
- Flag Holder
- Courtesy lights
- Self bailing
- Large wide aluminum ladder
- Engine room:
- 3 large batteries
- Oil exchanger
- Set Racors
- Holding tank
- Battery selection switches
- 12V lighting
- Sea Strainers
- Hot water tank
- Hydraulic steering

**Disclaimer**The Company offers the details of this vessel in good faith but cannot guarantee or warrant the accuracy of this information nor warrant the condition of the vessel. A buyer should instruct his agents, or his surveyors, to investigate such details as the buyer desires validated. This vessel is offered subject to prior sale, price change, or withdrawal without notice.

PRESENTED BY

**DAVE TISCHER**

CELL 516-668-1055

OFFICE 516-623-6256 x403

dave@dimillos.com

