

2019 Sabre 48 Salon Express Price Upon Request



Available for Immediate Delivery! Call our office for more details!

Sabre 48 Salon Express: An Ideal Combination of Evolution and Revolution.

The 48 Salon Express has a traditional exterior profile that belies her contemporary performance. She cruises at 27 knots and, and at wide open throttle, she'll attain more than 32 knots. Pod drives and joystick controls give every owner-operator the confidence to dock her in the most difficult of circumstances, and remarkably low sound levels while underway allow for a more pleasant experience while cruising.

Featuring a standard configuration of two cabins and two heads, the 48 Salon Express is supplemented by a utility space forward of the engine room that can be laid out as additional crew quarters. Designed with our customers in mind, her galley-down layout doesn't compromise on space and light, making food and drink preparation a pure pleasure. Unique to the Sabre 48 design, her master berth and en-suite head have an athwartships orientation, allowing for flat cabin sole on all side of the spacious island queen.

BASIC INFORMATION

Manufacturer:	Sabre	Model:	48 Salon Express
Year:	2019	Category:	Power
Condition:	New	Location:	Portland, US
Hull Material:	Fiberglass	Designer:	Kevin Burns

DIMENSIONS & WEIGHT

Length:	48 ft	Beam:	15.33 ft
Draft - max:	3.75 ft		

ENGINE

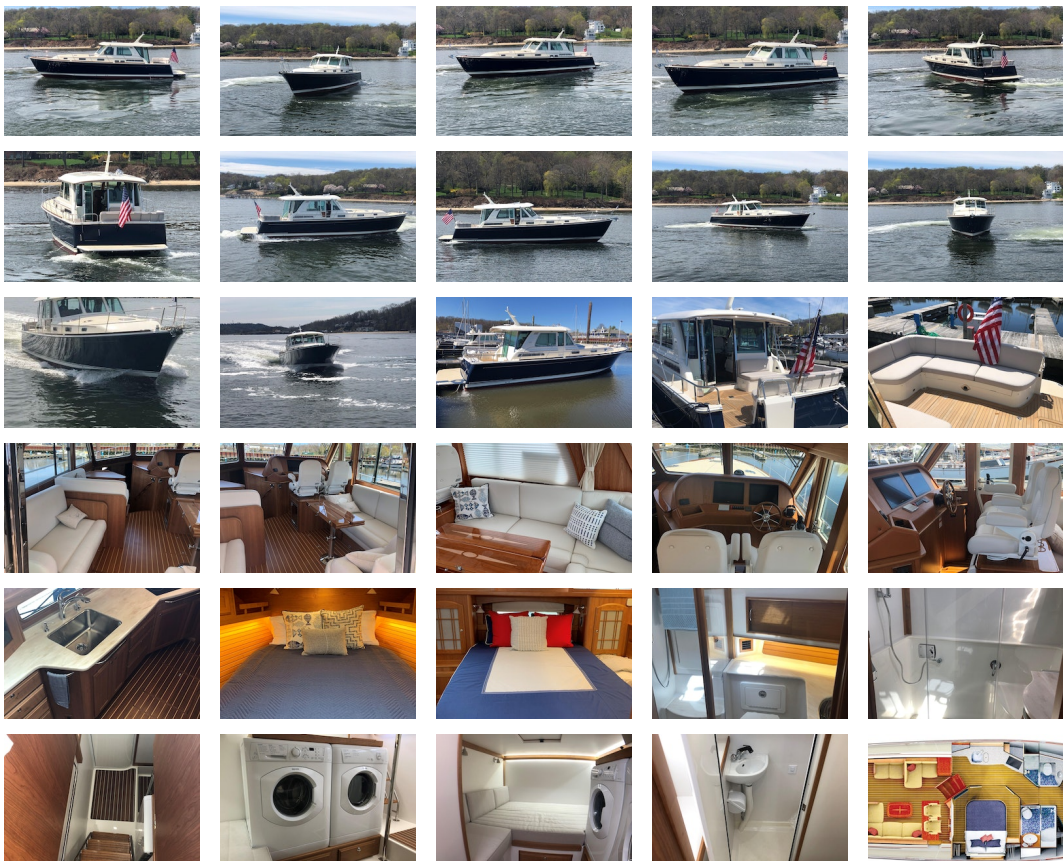
Make:	Volvo	Model:	D8 IPS 700
Engine(s):	2	Cruise Speed:	30 kn
Engine Type:	Inboard	Drive Type:	Pod
Fuel Type:	diesel	Horsepower:	550 horsepower
Max Speed:	34 kn		

TANK CAPACITIES

Fuel Tank:	525 gallon - 1 tank(s)	Fresh Water Tank:	160 gallon - 1 tank(s)
Holding Tank:	70 gallon - 1 tank(s)		

ACCOMODATIONS

Total Heads: 2



Standard Specifications

HULL

- Modified Deep "V" Planing hull design, with shallow pod drive tunnels.
- 14° deadrise at transom, 23° deadrise amidships.
- ISO NPG white gelcoat w/vinylester back-up resin.
- Bottom, topsides and transom VIP resin infused biaxial E-glass with Corecell SAN foam core.
- Stringer system biaxial E-glass with foam core.
- Resin Infused E-glass swim platform with molded-in anti-skid
- Hull side rubbing strakes.

- PVC rub rail with stainless steel cap.
- Painted (Urethane) double boot top.
- Gold recessed cove stripe.

DECK

- ISO NPG gelcoat.
- VIP resin infused biaxial E-glass with balsa core.
- Molded-in anti-skid deck surfaces.
- Companionway door to port.
- Sliding windows in salon on cabin sides.
- Electric opening window in salon aft bulkhead.
- Hinged access door to side deck at helm.
- Flush, outward opening, transom door with latch.
- Anchor locker with slam latch.
- Large lazarette/engine room access hatch in cockpit sole with compression latches.
- Sure Shade system over cockpit

DECK HARDWARE

- 1 1/4" Diameter type 316 stainless steel perimeter rail system.
- (8) 12" Stainless steel cleats (2 fwd, 4 mid ship, 2 in aft cockpit).
- 10" Stainless steel cleat to starboard of windlass
- (4) Custom cast stainless steel mid-rail line chocks.
- Custom cast stainless steel skene chocks forward.
- Stainless steel bollard style mooring cleats aft
- (2) Stainless 12" cleats on cockpit coaming on centerline
- Custom stainless steel bow pulpit with dual anchor roller for 44# CQR or Delta anchor and "lunch hook".
- Quick anchor windlass, electric rope-chain type.
- Flag staff and socket on taffrail.
- Burgee staff on bow pulpit.
- (6) Low Profile stainless steel hatches w/screens.
- (6) Custom stainless steel opening port lights.
- Teak toe rails.
- Teak cabin side eye-brow.
- Custom cast stainless steel "SABRE" medallion.

HELM STATION

- Triple windshield wipers with washers.
- Ritchie Compass.
- Switch controls for horn, running lights, anchor light, engine room blower and optional equipment.
- Stazo 400mm custom teak steering wheel with tilt helm and Sabre logo.
- (2) Stidd N Series helm seats with Ultraleather fabric, mounted on a box

PROPULSION

- 120A, 12V alternators each engine.
- (2) Exhaust by-pass mufflers.
- Engine room blower.
- Engine room vent ducts.
- Engine room floor with FRP anti-skid.
- White gelcoated engine room
- Mylar face foam noise barrier.

FUEL SYSTEM

- (2) 260 USG diesel fuel tanks port and starboard.
- Dual Racor fuel filters with water in fuel probes.
- (2) 2" "Diesel" deck fill plates.

12VDC ELECTRICAL SYSTEM

- Two AGM Group 31 dedicated engine start batteries.
- Three AGM 4D deep cycle ship's service batteries.
- One AGM Group 24 generator start battery.
- Remote control battery switches with controls at helm.
- Manual emergency battery crossover switch.
- Illuminated main circuit breaker distribution.
- Digital battery monitor.
- Lighting:
 - St. Maarten amber cabin reading lights.
 - High output LED lights in the overhead.
 - LED strip lighting in appropriate locations.
 - LED engine room lighting.
 - Tri-color lights over helm station, red, white blue
 - Cockpit courtesy lights.
 - Marine-grade, tinned wire throughout
 - 12VDC USB chargers at helm and in all cabins

120VAC ELECTRICAL SYSTEM

- **Onan 13.5 kw generator including:**
- Onan E series display
- Dedicated start battery.
- Water drop muffler.
- Cooling water intake strainer.
- Sound shield.
- Transfer switch.
- 50A shore power service with Glendinning Cablemaster & 70 ft. cord.
- Isolation transformer
- Illuminated main circuit breaker distribution panel.
- Digital AC system monitor
- 120V GFCI protected outlets in each cabin and engine room.
- 50amp, 3-bank battery charger
- Reverse cycle heat/ air conditioning in (3) zones.

MASTER STATEROOM AMIDSHIPS

- Spacious island berth athwartship layout with laminated trim.
- Hull side deadlight over head board
- Shoji style passageway and closet doors
- Shoji style portlight screen panels
- Cherry hull ceilings.
- Drawers under berth and in bulkhead aft of berth.
- (2) hanging lockers fore and aft of bed.
- LED flat screen TV and DVD player.
- Teak and holly sole.
- Sound deadening soft headliner panels.
- Pocket door to master head compartment.

MASTER HEAD

- Private access from master stateroom
- Custom tile in WC and shower sole
- Glass vessel style sink
- High gloss finish over solid cherry counter.
- Vanity cabinet below sink
- Storage outboard
- Mirror above vanity, cherry framed
- Separate shower stall with clear bi-fold enclosure and glass tile accent wall within
- Electric shower sump pump
- Opening port to side deck
- Deck hatch with blind/screen overhead
- Ventilation blower
- Stainless steel towel bars

GUEST STATEROOM

- Spacious island berth, with laminated trim.
- Cherry hull ceilings.
- Drawers under berth, A/C return grille beside.
- Storage lockers, drawers and shelves.
- Teak and holly sole.
- Sound deadening soft headliner panels.
- Pocket door to passageway.
- Private access to forward head and shower

GUEST HEAD

- Stainless steel under mount sink.
- Shower stall with seat and locker outboard.
- Hot and cold pressure water
- Electric shower sump pump.
- Storage lockers.
- Solid surface vanity top with bull nose.
- Towel bars
- Soap dispenser
- Cherry wood trimmed mirror over sink.
- Ventilation blower.

GALLEY

- Solid surface galley counter top.
- Stainless steel under mount sink with cover and pull-out faucet
- Stainless steel under mount prep sink with cover.
- Soap dispenser
- Isotherm stainless steel stand-up refrigerator (top) and freezer
- Two burner electric cook top.
- Convection microwave with stainless steel face
- Drawers and storage lockers below counter.

- Built-in waste basket. Recycle bin below steps.

MAIN SALON

- Two Stidd N Series helm chairs mounted on a box
- "L" settee to starboard, 5" foam cushions, with storage and Sabre tool drawer under.
- High Gloss finished table with hi-low pedestal and angled slide mechanism. Lowers to coffee table height.
- Entertainment unit to port including:
- flat screen LCD TV 32" on lift with DVD player
- Sound deadening, soft headliner panels.
- Raised mates L-shaped settee to port of helm
- Stainless steel door to cockpit
- Electrically operated window aft of L-settee
- Swing door at helm to starboard side deck
- Deep chart table forward of L-settee. Fiddles at nav station

DÉCOR

- Varnished cherry interior finish.
- Screens on all opening ports.
- Ocean Air screen/blinds on deck hatches.
- Ocean Air pleated blinds on side windows and side door
- Drapes on aft curved windows
- Optional fabric and drapery selections.
- Dovetailed, varnished maple drawer boxes

FRESH WATER SYSTEM

- Water capacity 160 gals.
- Stainless steel, 20 gal. water heater, operates on 110-VAC or engine heat.
- Temperature control valve on hot water supply.
- Hot and cold water pressure system 12V.
- Fresh water spigot in engine room.
- Optional Cockpit shower, hot and cold.
- Optional Fresh water wash down in anchor locker.

WASTE DISPOSAL

- Polyethylene holding tank with 70 gallon capacity.
- Jabsco Quiet Flush fresh water MSD in guest head
- Tecma Eco MSD in master head
- Diaphragm waste pump on holding tank.

SAFETY

- Single Kahlenberg chrome trumpet horn with compressor
- Fire extinguishers, (5) at 2 1/2 lbs.
- Marelon sea valves on all thru-hull fittings below waterline.
- Bonding system to safeguard against galvanic corrosion.
- Automatic fire extinguishing discharge system in engine space with override.
- (3) Automatic 12V electric bilge pumps.
- (3) high water switches and alarm.

UTILITY ROOM

- Work space below salon with work bench, drawers and shelves
- Optional crew quarters with head unit available in this space

Factory Options

FIBERGLASS

- Dark hull colors
- Anti-skid color (fore & side decks, aft cockpit, and recessed area of swim platform)

MECHANICAL

- Volvo Package with (2) D8 IPS 700, 550hp, in lieu of Cummins Zeus drives. Volvo Automatic Interceptor Trim Tabs 900mm, Volvo Active Corrosion Protection, Dynamic Positioning System, Volvo Autopilot incorporated into helm displays, Joystick Driving with the joystick on Stidd arm rest, Slow speed, single lever and cruise control software, Volvo Clear Wake exhaust by-pass, Garmin GPS Receiver, (2) 8617 Volvo MFD with separate Garmin SD card reader
- Reverso oil change system
- Freedom Lift dinghy lift
- Shore water inlet
- Single Seagull water purifier on galley cold water plumbed to separate spigot
- Single Seagull water purifier on icemaker (optional)
- Salt water wash down system fore and aft
- Fresh water wash down forward

ELECTRICAL

- (4) Additional dimmer switches in galley, master stateroom, forward cabin & cockpit
- Inverter/charger 3000 watt true sine wave with remote control
- Beam central vac system with (2) outlets and a 32' expandable hose
- Install 120VAC outlet inside chart storage locker. Outlet location to be aft and outboard.
- Install 120VAC outlet outboard of washer/dryer cabinet in utility room
- Install 120VAC outlet on the fwd end of the master berth, same position as the aft outlet.
- Install 120VAC outlet on the fwd end of the upper cabinets in the guest cabin on the stbd side.
- Dimmer switch for cockpit overhead lights.
- Install 12V/USB charger at head of master berth on the fwd end. (Aft is standard.)
- Install 12V/USB charger at head of fwd berth on the stbd side. (Port is standard.)
- Install 12V/USB charger in utility room. Inboard of the washer/dryer near the shelf.
- "Prewire for 4 sets of speakers. Stereo head to be installed in helm pod.
- 2 speakers in the cockpit, standard locations
- 2 speakers in the main salon in the standard locations
- 2 speakers in master cabin, fwd & aft inboard near the bulkhead
- 2 speakers in the flybridge"

EXTERIOR AND DECK

- Fly Bridge with stainless steel stairs, U-shaped settee, folding high gloss table, Stidd helm seat and single engine controls
- Teak deck on FRP swim platform
- Teak decking in aft cockpit including steps
- Kahlenberg triple chrome horns
- Hot and cold transom shower
- Custom Sunbrella fabric in cockpit

INTERIOR

- Accord Shades on all opening ports

GALLEY

- Install cherry doors on glass cabinet aft of galley sink. Install wood shelf with fiddle half way up in cabinet, ala CC046
- Add a door on the small cabinet forward of galley sink. Remove fiddle and shelf, leave open inside, ala CC046
- Build flat bottom in locker under cooktop

MAIN SALON

- Ultraleather upholstery main salon
- Icemaker in cabinet below helm seats
- Notch cover aft and outboard for opening and for wires to pass through, KEEP THUMBHOLE
- Move double ss cup holder from Nav desk area and install outboard of mate seat (port) on window edge. Owner understands that this might interfere in lowering blinds
- Add single SS cup holder outboard of joy stick. Make sure there is enough clearance by the OceanAir blind
- Delete the std cherry grab rail at the helm
- Increase two std main salon armrests another 4" in height on both settees.
- Add a additional cherry drop in box on port side of helm pod face above standard helm drop in box. Additional box to be rectangular with inside opening 6H"x8W"x10"D. Leave enough room below the box for the dealer to install a Fusion 700 stereo.
- Delete the cherry trim around the sliding port settee creating a slightly larger entry into the utility room/crew quarters.

MASTER STATEROOM & HEAD

- Install a 28" TV with separate DVD in Master Stateroom. Install TV 47" from cabin sole.
- Witch Hazel Corian counter with radius and Corian Cameo White undermount sink in master head in lieu of cherry counter and vessel sink w/ vessel faucet. Add 3" Witch Hazel fiddle behind sink. Ala CC040
- Install standard 9" Latex Supreme firm mattress

FWD CABIN & HEAD

- Fwd head cabinet to be 1/2 fully open and the another 1/2 to have shelf with fiddle
- "Install second cherry towel rack on inside of door, location 10" below top of door"
- 9" Latex Supreme mattress in fwd cabin.

UTILITY ROOM

- Customize utility room. Install Slendide model #2100XC combo washer/dryer with half bureau enclosed with cherry cubby (no door over washer/dryer). Washer/Dryer sits down on FRP & inboard next to berth. Cherry top over W/D extends inboard to become top of bureau. Mirror above W/D & bureau. Outlets, AC control, etc to be relocated.
- NOTE: No notch in mattress"
- UTILITY ROOM TO LOOK LIKE CREW QUARTER:
- S/B Crew Mattress & S/B Seat and Back Rest (3 cushions) in utility room.
- Note: COMBO washer/dryer, no notch in mattress.
- Install cherry stair treads in utility room. Replace utility lights, 3321658, with cabin lights, 3320673. Add Ultraleather wall covering. Install teak and holly floor in utility room. Install TV in utility room. Outlets, AC control, etc to be relocated.

the buyer desires validated. This vessel is offered subject to prior sale, price change, or withdrawal without notice.

