

2013 Back Cove 37 \$489,000



Well thought out, equipped and maintained, you won't find a Back Cove better suited to cruising. Just back from completing the loop, Chicaboom is ready for a new owner. A stunning black hull, cockpit bimini and full enclosure, Garmin electronics and a very tastefully done interior are some of the highlights. Call for an appointment to see.

Brochure Description

Continuing with the same practical features, usability and low maintenance, which have built the popularity of the Back Cove brand since its inception. In the master stateroom there is a very large island berth for ease of egress, and for stowage of owner's gear. Also, you will find many lockers, cabinets and drawers provided.

To starboard aft of the master is a full guest cabin with double berth and plenty of storage. Opposite and to port is a large head unit with a separate stall shower. Between the lower and salon sole levels, there is a mid-galley fully equipped with a (2) drawer refrigerator, a freezer, microwave and deep stainless steel sink as well as many drawers and lockers for galley storage. Large windows overhead give this galley ample visibility and light.

In the salon are twin Stidd seats for helmsman and crew. Aft of the helm seat an L-shaped settee and to port a shorter settee. A large inlaid table offers a comfortable and elegant space for dining with crew and guests. Large windows provide ample light and air while overhead a large sliding pilot hatch allows air to flow through this space.

Opening to the cockpit are large swing doors which completely open up the salon to the cockpit. And the transom seating will provide the comfort you desire for socializing with family and friends.

Engine access is extraordinary, as the salon floor raises to expose the yacht's mechanical systems and engine space.

And of course, you will find the usual great features Back Cove is known for; wide walk-around decks, ample anchor locker storage space, beautifully molded parts, smart electrical & mechanical systems, quiet running hull, economical burn rates plus more.

BASIC INFORMATION

Manufacturer:	Back Cove	Model:	37
Year:	2013	Category:	Power

Condition:	Used	Location:	Portland, US
Vessel Name:	Chicaboom	Hull Material:	Fiberglass
Designer:	Back Cove Yachts Design Team		

DIMENSIONS & WEIGHT

Length:	37 ft	Beam:	13.25 ft
Draft - max:	3.25 ft		

ENGINE

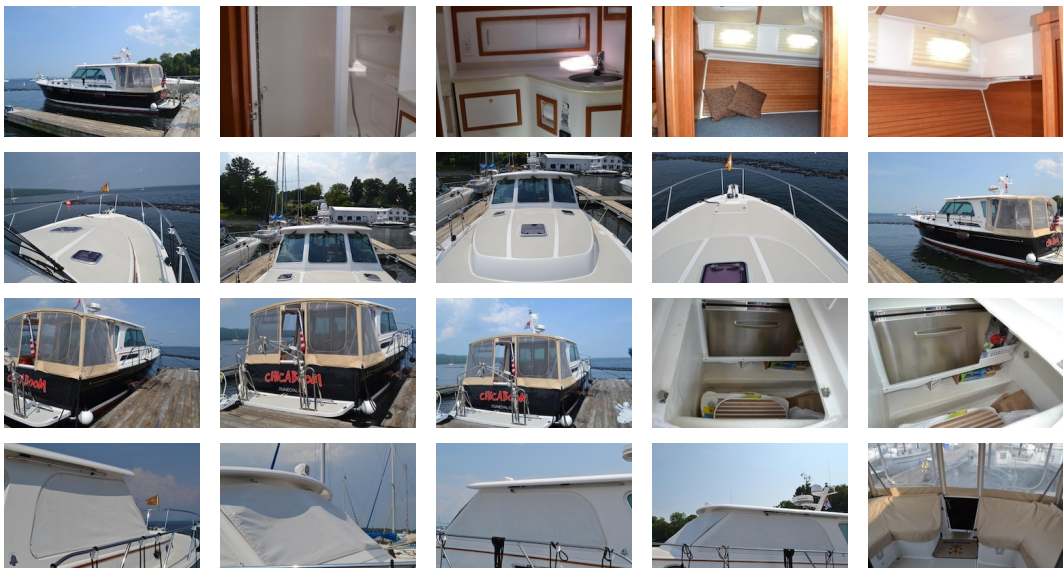
Make:	Cummins	Model:	QSC 8.3L
Engine(s):	1	Cruise Speed:	25 kn
Range:	374 mi	Engine Type:	Inboard
Drive Type:	Direct	Fuel Type:	diesel
Horsepower:	600 horsepower	Max Speed:	28 kn

TANK CAPACITIES

Fuel Tank:	300 gallon - 1 tank(s)	Fresh Water Tank:	120 gallon - 1 tank(s)
Holding Tank:	50 gallon - 1 tank(s)		

ACCOMODATIONS

Total Cabins:	2	Total Berths:	1
Total Heads:	1		





Electronics

- KVH M1 with Receiver for Satellite TV
- (2) Garmin 5212 12" Multifunction Displays
- Garmin GXm51 Satellite Weather/Radio Antenna
- 24" HD Radar Dome
- Sounder Module
- Bronze Thru-Hull for Sounder/Depth
- VHF with Antenna
- AutoPilot
- Spotlight

Accommodations

- Salon Seating Area
- L-Settee with Hi/Low table converts to double berth
- Double settee opposite with molded end table
- Flip-down LCD TV w/ DVD
- Large engine room hatch opens by electro-hydraulic actuator
- Premium flooring material
- Molded headliner with padded panel inserts
- XM friendly stereo system w/ CD & interior/cockpit speakers w/ wired remote
- Master Stateroom
- Cherry interior on molded composite hull liner
- High pressure laminate "teak-n-holly" cabin sole
- Molded headliner with padded panel inserts
- Island queen centerline berth forward with drawers & storage below
- Shelves outboard with cherry fiddles
- Cherry hull ceiling
- Cedar lined hanging locker with shelf
- Reading lights
- Multi drawer dresser with dovetailed drawers
- LED overhead lighting
- Guest Stateroom
- Molded headliner with padded panel inserts
- Wide double berth with drawers under
- Night stand with storage
- Outboard storage shelves over berth
- Cherry headboard with reading lights
- Cherry hull ceiling

Mechanical

- Mechanical Systems
- An optional engine upgrade to a single Cummins QSC 8.3, 600 hp Diesel Engine was installed when the boat was built.
- Electronic single lever engine control

- Digital engine control panel with alarms and hour meter
- Internal sea strainer
- Dual Racor Filters
- (3) Engine room lights
- 2.25" Aquamet shaft
- 4 Blade NiBrAl propeller
- Dripless shaft log
- Electric trim tabs with indicators
- 8" Exhaust with two stage horizontal muffler
- Teleflex hydraulic steering with tilt helm pump
- Stazo teak steering wheel
- Hot and Cold pressurized water (110V and engine heated)
- 11 gallon hot water heater with heat exchanger
- Bow thruster with joy stick control
- Marelon sea valves on underwater thru hulls
- Fireboy extinguisher system & carbon monoxide detector
- Macerator with overboard discharge
- 9.0 kw gen set Onan
- Reverse cycle heat and air in three zones

Head

Head Oversized head with separate shower stall Built-in vanity with sink Solid surface countertop Full length mirror on door Single lever faucet and soap dispenser Shower drain sump pump system Molded seat in shower stall with storage beneath and locker outboard Fresh water electric MSD with holding tank Waste tank monitor Macerator for overboard discharge Stainless steel opening port with screen 12V Vent Fan

Galley

- Seagull IV drinking water purifier system
- Double refrigerated drawers in lieu of refer/freezer
- Segull water filter with spigot "Y" connection to ice maker
- Inline filtration system

Cockpit

- Aft cockpit canvas/isinglass enclosure with additional screen enclosure.
- Removable cocktail table with 2 brackets
-

Engine

- An optional engine upgrade to a single Cummins QSC 8.3, 600 hp Diesel Engine was installed when the boat was built.
- Line cutter on prop
- 28" x 31" RH, 4 blade Class 1, 2.25" bore, Nibral prop
-

Canvas

- This Back Cove 37 has an extensive custom canvas package. It includes an Aft Camper top with an additional screen kit included, zipper pockets, track under hard top, and a zipper forward for removal.
- Bimini top including a storage boot for the bimini while in folded position
- Seat covers all in Sureshade to match the sand color in the the rest of the boat.
- Full set of custom windshield, sides and rear canvas window covers.
- Screen for single aft opening door.

Hull/Deck

- On the bow is a Quickline 46lb Stainless Steel Ultra anchor with Ultra swivel and Ultra Snubber bridle.
- There is a salt water wash down at the anchor
- Second, Fortress FX23, anchor
- Filtration system at shore water inlet
- Swim platform has a Saint Croix Davit System Model 400 with #6 winch on one of the arms

- Hull Vacuum infused FRP construction Advanced prop pocket hull design Vinyl ester backup resin Vacuum bagged PVC core hull design Back Cove white iso-npg gelcoat w/ graystone anti-skid on walking surfaces Multiaxial E glass reinforcement Awlgrip boot top
- Deck Vacuum infused FRP construction Port & starboard molded steps leading to side & fore deck Teak accent stripe Back Cove white iso-npg gelcoat w/ graystone anti-skid on walking surfaces Multiaxial E glass reinforcement Lewmar hatch with screen in main cabin Lewmar hatch with screen over island berth Lewmar hatch with screen over head compartment Lewmar hatch with screen over guest stateroom Lewmar pilot hatches with screens/shades in hardtop (6) opening Port lights with screens Clear anodized aluminum windshield with center opening Hailer horn on hardtop Anchor locker On the bow is a Quickline 46lb Stainless Steel Ultra anchor with Ultra swivel and Ultra Snubber bridle. There is a salt water wash down at the anchor. Molded Composite bow sprit w/ stainless steel anchor roller and windlass Mooring cleats w/ skene chocks forward, aft & spring line cleats Pop-up cleats at transom corners Custom 1 1/4" 316L stainless steel bow rail (2) Stidd 1200 series helm seats Swim platform and swim ladder Hot and cold cockpit shower Self bailing cockpit Transom Door Seat in cockpit with storage below

Electrical

- Electrical Systems:
- AC and DC control panels with polarity indicator DC system battery management switching DC breakers for electronics 110V AC 30 amp shore power with 50 foot cord set Emergency parallel switch Galvanic isolator Battery Charger, 50 amp (2) 4D AGM house battery (3) Group 31 engine start battery (3) 12VDC automatic bilge pumps 12V outlet at helm Bonding system with zinc anode Cockpit courtesy lights GFI protected 110V circuits (3) windshield wipers with washer system Compass, illuminated Running lights

Optional Equipment

- Black Hull Color
- UL Brista Distressed Buckskin in Main Salon and STIDD Helm Chairs
- Custom Mattress in Master Stateroom & Guest Stateroom
- Removeable Cockpit Table w/ 2 Brackets
- Stern Thruster
- Oil Changing System
- 1800 Watt Inverter
- Mast for Hardtop
- Salt Water Washdown Forward
- Additional Freezer Under Helm Sole
- Ocean Air Blinds on Side Windows
- Screens for side windows
- Garmin GXM51 Satellite weather/radio antenna
- St. Croix #400 Davit System
- Window Tinting
- Custom canvas enclosures and window covers
- Cummins Cruise Kit
- Onan Cruise kit
- Quickline anchor
- Fortress (second) anchor

Interior

- Ocean Air Blinds (4) on Bi-fold salon entry doors
- Ocean Air Blinds on side windows
- Side window screens
- All windows in cabin are tinted with heat shield Ceramic 40 window film
- Ice maker in helm seat base locker
- Dimmer switch for main salon lights and cockpit overhead (dims together)

Disclaimer

The Company offers the details of this vessel in good faith but cannot guarantee or warrant the accuracy of this information nor warrant the condition of the vessel. A buyer should instruct his agents, or his surveyors, to investigate such details as the buyer desires validated. This vessel is offered subject to prior sale, price change, or withdrawal without notice.

PRESENTED BY

CHRISTOPHER DIMILLO

CELL 207-671-3292

OFFICE 207-773-7632 x249

chris@dimillos.com

