

## 2002 Mainship 430 Trawler **\$350,000**



Spring Special \$ 350,000. This 2002 Mainship 430 Trawler with power by twin 370 Yanmars and built with the popular "Expedition Package." List includes full electronics package in the flybridge by Raymarine, air/heat, genset, full bimini and enclosure (navy blue), Awl-Gripped Flag Blue hull, two stateroom layout with two private heads, windlass, central vac, washer/dryer combo, galley down with larger refrigerator/freezer, 3-burner electric stove/oven, microwave, coffee maker, full entertainment center with 20" TV, VCR, CD changer, AM/FM receiver, nav station, plus a few more added features we thought would be nice while cruising, including a bow thruster, flag blue hull, 2000W inverter and a Ocean Marine systems dinghy davit. Call our office today to arrange a personal showing. Trades considered.

### BASIC INFORMATION

<b>Manufacturer:</b>	Mainship	<b>Model:</b>	430 Trawler
<b>Year:</b>	2002	<b>Category:</b>	Power
<b>Condition:</b>	Used	<b>Location:</b>	Fall River, US
<b>Vessel Name:</b>	2002 Mainship 43 Trawler	<b>Hull Material:</b>	Fiberglass

### DIMENSIONS & WEIGHT

<b>Length:</b>	43 ft	<b>Beam:</b>	15.5 ft
<b>Draft - max:</b>	3.67 ft		

### ENGINE

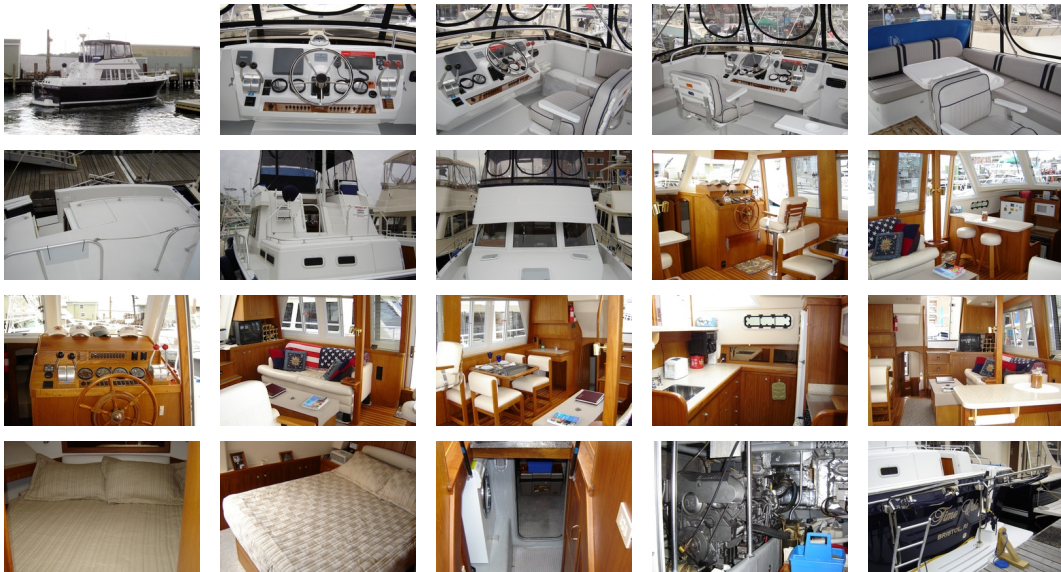
<b>Make:</b>	Twin Yanmars	<b>Model:</b>	6LYA-STP
<b>Engine(s):</b>	2	<b>Hours:</b>	530

**Cruise Speed:** 18 kn **Fuel Type:** diesel  
**Max Speed:** 22 kn

## TANK CAPACITIES

**Fuel Tank:** - tank(s) **Fresh Water Tank:** - tank(s)  
**Holding Tank:** - tank(s)

## ACCOMMODATIONS



**Engines** Total Power: 370

**Tanks** Fuel: 500 Fresh Water: 250 Holding: 60

**Accommodations** Main Salon - full entertainment center, sofa with storage to port, dinette to starboard with seating for four, lower swivel helm chair, cherry & holly soles, two sliding doors with access to walkarounds, opening windows with screens.

Forward Stateroom - center-line queen berth, two hanging lockers, cabinet drawers below berth, comforter with pillow shams, opening ports and hatch.

Master Stateroom - queen size berth, large hanging locker, hanging cabinets, cabinet drawers below queen berth, private head with stand-alone shower, holding tank monitor, electric toilet, Corian counters, two built-in night stands at head of queen berth.

Flybridge - full Raymarine electronics package, swivel helm chair, large L-shaped settee to port with nice size table for dining, ample seating to starboard with forward & aft bolsters, fully enclosed with Sunbrella canvas and Strata-glass.

### Galley/Head

- Galley
- Princess 3-burner electric stove & oven
- GE microwave oven
- Space-saver coffee maker
- GE full-size refrigerator and freezer
- Double stainless steel sink
- Corian counter tops
- Pull-out cabinet trash receptacle
- Ample cabinetry storage
- Teak & holly soles

- Head
- Two heads, forward and aft
- Both with separate stand-alone shower
- Electric toilet with macerator
- Two separate holding tanks
- Corian counters
- Vanity cabinets in each head
- Electric head fans
- Head cabinet storage below vanity
- Shower sump pumps for each head
- Fully molded for easy & clean water drainage

### **Electronics**

- RL70 CRC 7" color radar chartplotter
- Raystar 120 WAAS/GPS receiver
- 4kW radome scanner
- RayNav 300 GPS
- ST60 Tridata depth
- Ray 215 VHF radio
- 8ft. antenna
- ST6001+ autopilot

### **Electrical**

- 8.0kW Kohler genset with sound shield
- AC/DC distribution panel
- 50ft. shore power cord
- Anode bonding system
- 50 Amp shore power service
- Dual shore power forward & aft
- Two 8D batteries for house & starting
- One 12V battery for genset

### **Hull/Deck**

- Flag blue hull
- Sport white decks

### **Expedition Package**

- Air conditioning with reverse cycle heat
- Windlass
- Central Vacuum
- Washer/Dryer combo
- Teak & holly soles
- Hydraulic steering
- Hydraulic throttle & gear controls
- Internal sea strainers
- X-Oil Changer system
- JVC 21" TV, VCR, Multi-disk changer, VHS, AM/FM receiver
- Complete US Coast Guard kit
- Dock lines and fenders

### **Additional Equipment**

- Bow thruster
- Bimini Top w/ four (4) sided enclosure - Navy blue sunbrella
- Awl-Gripped Flag Blue hull
- 2000W inverter
- Ocean Marine systems dinghy davit

**Comments** Owner's have plans to move to a larger boat. All reasonable offers will be considered.

Trades considered. Call for more details.

**Disclaimer** DiMillo's Old Port Yacht Sales offers the details of this vessel in good faith but cannot guarantee or warrant the accuracy

of this information nor warrant the condition of the vessel. A buyer should instruct his agents, or his surveyors, to investigate such details as the buyer desires validated. This vessel is offered subject to prior sale, price change, or withdrawal without notice.

PRESENTED BY

**PETER OUELLETTE**

CELL 207-318-0626

OFFICE 207-773-7632 x285

[peter@dimillos.com](mailto:peter@dimillos.com)

