

2017 Regulator 25 **\$180,000**



2017 Flag Blue Regulator 25 with only 100 hours.

Options include

- Twin Garmin 7612 screens
- Garmin Radar
- POLK stereo system
- T-top power coated rocket launchers
- Transom Door

Conveniently located on the North Shore of Long Island. Call today for more details or to schedule a private showing.

BASIC INFORMATION

Manufacturer:	Regulator	Model:	25
Year:	2017	Category:	Power
Condition:	Used	Location:	Glen Cove, US
Hull Material:	Fiberglass		

DIMENSIONS & WEIGHT

Length:	25.17 ft	Beam:	8.83 ft
----------------	----------	--------------	---------

Draft - max:

2.75 ft **Dry Weight:**

7,500 lb

ENGINE

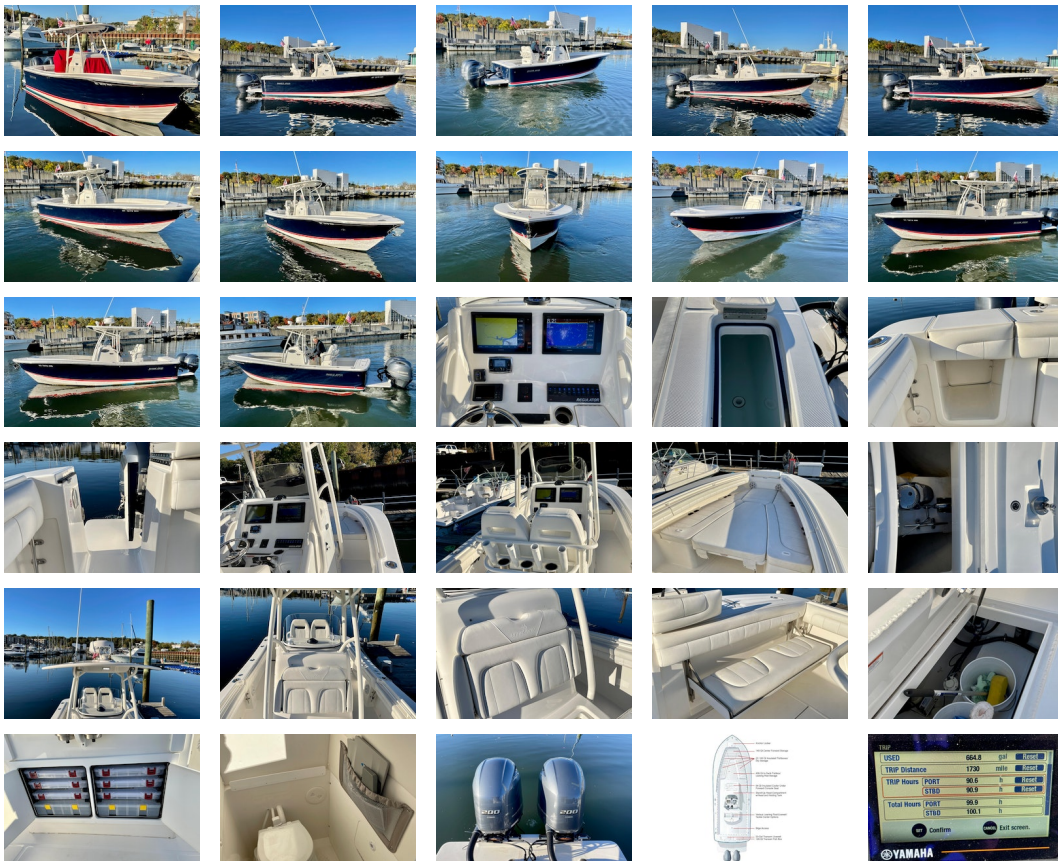
Make:	Yamaha	Engine(s):	2
Hours:	100	Engine Type:	Outboard
Fuel Type:	unleaded	Horsepower:	200 horsepower

TANK CAPACITIES

Fuel Tank:	160 gallon - 1 tank(s)	Fresh Water Tank:	21 gallon - 1 tank(s)
Holding Tank:	- tank(s)		

ACCOMODATIONS

Total Heads: 1



Manufacturer Provided Description

Built to meet the demands of serious anglers and boaters looking to maximize their time on the water with family and friends, the Regulator 25 delivers standards far above its class.

With standard head and cockpit shower as well as transom livewell, saltwater and freshwater wash down, insulated forward fish boxes, in-deck illuminated locking rod storage and Regulator's exclusive Fiberglass Grillage System and twin Yamaha F200C outboard engines, the 25 is the result of 25 years of expertise, as well as valuable customer and dealer input. With a beautiful curved console, flat flush liner and sleek lines throughout, you will be amazed at how well the new 25 delivers.

Standard Equipment

Console

- Teleflex Seastar Hydraulic Tilt Steering
- Ritchie Blue Face SuperSport Compass
- Marine Stereo w/ AM/FM/WB/USB/SiriusXM Ready/ iPod & iPhone Ready w/ Bluetooth & 4 Premium Speakers
- Stand-Up Head Compartment w/ Head w/ Holding Tank, Interior Lighting & Mirror
- EZ-View Flushmount Electronic Mounting Face & Access in Head Compartment
- Recessed Comfort Footrest w/ Storage Access
- Breakered Electrical System
- Triple Battery System w/ Switches & Marine Batteries
- Frameless Tempered Glass Windshield
- Glove Box w/ Fiberglass Lid
- Upholstered Console Seating for Two
- 64 qt. Insulated Cooler Under Forward Console Seat
- Stainless Steel Cup Holders (2)
- Vented Port Light in Console

Deck & Cockpit

- 360° Coaming Pads
- Stainless Steel 14x18 Trim Tabs w/ Indicator Switch
- Cockpit Lighting
- Bilge Pump w/ Automatic Float Switches (2)
- Pull Up Bow Cleats
- Springline & Cockpit Cleats w/ Hawse Pipes
- Stainless Steel Hardware Thru-Bolted w/ Elastic Stop Nuts
- Stainless Steel Transom Handrails
- Molded Non-Skid Horizontal Surfaces
- Integrated Flush Folding Transom Seat
- Armstrong Dual Engine Bracket w/ Integrated Telescoping Ladder
- 140 qt. Forward Center Dry Storage Compartment
- Forward Deck Anchor Locker w/ Rope Storage
- Stainless Steel Scuppers

Fishing Equipment

- 2X SuperSport Leaning Post w/ Backrest, Folding Footrest, Rod Holders, Cup Holders & Cooler Storage
- Saltwater Wash Down and Livewell Plumbing
- Insulated Illuminated Forward Fishboxes (2) • In-Deck Illuminated Fishbox/Locking Rod Storage
- Stainless Steel Rod Holders (4)
- 21 gal. Freshwater System w/ Wash Down and Transom Shower

Electronics

-2) Garmin GPSmap XSV

-Garmin dome radar

-ACR Remote Spotlight

-Yamaha independant engine display

-Forward and aft LED deck spreader lights

-POLK stereo and speakers

DisclaimerThe Company offers the details of this vessel in good faith but cannot guarantee or warrant the accuracy of this information nor warrant the condition of the vessel. A buyer should instruct his agents, or his surveyors, to investigate such details as the buyer desires validated. This vessel is offered subject to prior sale, price change, or withdrawal without notice.

PRESENTED BY

ANDREW COUSINS

CELL 781-502-1580

OFFICE 516-623-6256 x405

andrew@dimillos.com

