

2007 Sabre 34 \$289,900



2007 Sabre 34 Hardtop Express

We are pleased to offer this pre-owned 2007 Sabre 34 Hardtop Express. Built in Maine and home to one of America's finest boatbuilders, the design of the 34 offers the classic look and performance for which Sabre Yachts is so well known. But the Sabre 34 has even more of the elegance and creative details that boat buyers have come to expect from the Sabre Team.

She sleeps a cruising couple comfortably on her spacious island, queen berth and offers ample amount of storage space. She is powered by upgraded Vovlo D6 370hp diesel engines that will cruise her at a swift 28 knots, topping out around 32 knots, allowing one to arrive at their destination in comfort, style and in a timely fashion. Her average performance rate is a pleasant 1 NM/G throughout her RPM curve. Cruise in the mid teens, burn an average of 1 NM/G. Bump up your speed to 28 knots, still average 1 NM/G. That is a great hull design and engineering at its best.

Additional equipment includes below deck & helm air conditioning/heat, generator, windlass, (2) Raymarine E120 MFD's, Simrad auto-pilot, ICOMM radio, satellite weather, electric opening center windshield, Side-Power bow & stern thruster with wireless remote control, dark blue hull, aft canvas enclosure, and much more.

A one-owner boat, Clean, clean, clean. Indoor winter stored since new. Maintained to very high standards, is in excellent condition and she shows very very well. If you are in the market for a 34' down-east boat, you should put this at the top of your list.

BASIC INFORMATION

Manufacturer:	Sabre	Model:	34
Year:	2007	Category:	Power
Condition:	Used	Location:	Manchester, US
Vessel Name:	2007 Sabre 34 Hardtop Express	Hull Material:	Fiberglass
		Designer:	Sabre Design Team

DIMENSIONS & WEIGHT

Length:	34 ft	Beam:	13.25 ft
Draft - max:	3 ft		

ENGINE

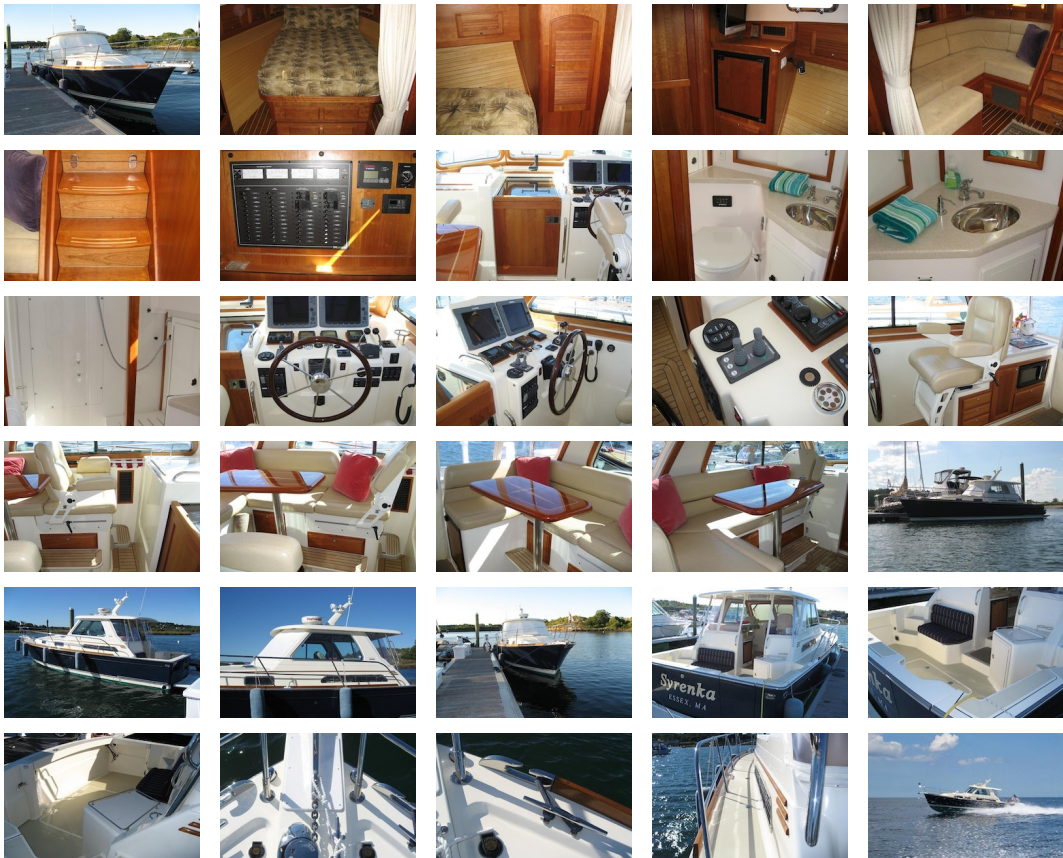
Make:	Volvo	Model:	D6 370hp
Engine(s):	2	Hours:	290
Cruise Speed:	27 kn	Engine Type:	Inboard
Drive Type:	Direct	Fuel Type:	diesel
Horsepower:	370 horsepower	Max Speed:	32 kn

TANK CAPACITIES

Fuel Tank:	250 gallon - 1 tank(s)	Fresh Water Tank:	60 gallon - 1 tank(s)
Holding Tank:	30 gallon - 1 tank(s)		

ACCOMODATIONS

Total Cabins:	1	Total Berths:	1
Total Heads:	1		



Accommodations

- **Salon**
- "L" Settee w/4 1/2" foam cushion
- Ultrasuede upholstery
- Storage under settee through top
- (2) Enclosed lockers outboard w/open shelf and removable fiddle
- Recessed master AC/DC breaker panel facing FWD on aft bulkhead behind cherry doors
- AC/DC refrigeration w/cherry plywood door insert
- LCD TV w/DVD player mounted on swivel bracket
- Clarion CD/FM/AM stereo system
- Sound deadening headliner panels
- **Forward Stateroom**
- Spacious queen island berth w/5" cushion
- Ash hull ceilings
- (4) Drawers under berth
- Large hanging locker, cedar lined w/cedar shelf and closet pole
- Upper enclosed shelves w/storage behind
- Teak and Holly sole w/(2) coats of sealer
- Soft headliner panels
- Privacy curtain and curtain track

Galley/Head

- **Standard Galley Equipment**
- Molded countertop
- Large stainless steel single bowl sink w/single lever faucet
- Two burner electric cooktop
- Microwave oven
- Dovetailed drawers
- 4.2 Cubic ft. refrigerator
- Lockers outboard above counter top
- **Head**
- Stainless sink w/faucet
- Separate shower stall w/circular acrylic door
- Hot and Cold pressure water
- Electric shower sump pump
- Storage lockers
- Soap dispenser in counter
- Solid surface counter w/bull nose
- Starboard shower grate
- Wood trimmed mirror over sink and mirror in top of passageway door
- Ventilation blower

Helm Deck and Helm Station

- **Helm Deck**
- Stidd helm seat
- Wide jump seat w/storage below, aft of helm seat
- Raised L-settee to port w/custom stidd convertible backrest for mate's seat
- Storage and drawers beneath settee
- Cherry wood in helm area
- Molded in air conditioning ports on FWD end of each dash
- Sliding companionway door and hatch system
- Chart locker cover w/clear cover
- Helm deck air condition
- **Helm Station**
- Engine start/stop control panel
- Digital engine gauge panel
- Water in fuel warning light
- Triple windshield wiper w/washers - center opening - Power
- Ritchie compass (back lit)
- Switch controls for horn, running lights, anchor light, eng. room blower and opt. equipment
- Tilting navigational electronics helm pod
- Teak decking on helm deck

Hull/Deck Composite and Deck Hardware

- **Hull Composite**
- Modified "V" planing hull design w/shallow prop pockets
- 23 Degree deadrise amidships and 16 degree aft
- Flag Blue hull color
- Knitted biaxial structural E-glass reinforcements
- Vacuum bagged divinycell foam core in hull bottom and top-sides
- Foam/plywood cored fiberglass stringer system

- Swim platform w/undermounted telescoping ladder
- Hull side rubbing strakes
- PVC rub rails w/stainless steel cap
- Painted (IMRON) double boot stripe
- Gold cove stripe
- **Deck Composite**
- Contrasting anti-skid, exterior deck surfaces
- ISO NPG gelcoat
- Knitted biaxial structural E-glass reinforcements w/balsa coring
- Nida Core used in areas above engine room cockpit molded anti-skid deck surfaces
- Recessed windows in hard top w/silver anodized frames
- Inside walls sheathed w/high pressure laminate
- In swinging transom door w/latch system
- Carbon fiber reinforced fiberglass bow pulpit w/anchor roller
- Double sided anchor locker w/Southco latch
- Large aft hinged double sided lazarette locker hatch w/gas struts
- Large double-sided eng. room hatch w/(2) compression latches
- Hinged helm instrument pod
- Radar mast on hardtop
- **Deck Hardware**
- 1 1/4" Diameter type 316 stainless steel premiter rail system
- (6) 12" Stainless steel cleats (2 FWD, 2 Mid Ship, 2 Aft Cockpit)
- (1) 10" Stainless steel anchor rode tie off cleat
- Single anchor roller
- Flagpole holder and flag staff
- On Deck - Lewmar low profile polished aluminum hatches w/screens
- On Hardtop - (2) Lewmar low profile sliding hatch
- Screens on all opening ports and hatches
- (4) Stainless steel opening ports
- Accord Shades on all opening ports
- Teak toe rails PORT and STBD w/custom cast mid rail chocks FWD skene chocks
- Teak cabin side eye-brow
- Custom cast stainless steel "Sabre" medallion
- Cast stainless steel hawes pipes in cockpit through hull sides and transom

Electrical

- **120 VAC Electrical System**
- (2) 30 Amp. AC shore power inlets and 50 ft. cord
- Galvanic isolator w/monitoring system
- Illuminated main circuit breaker distribution panel
- 110V outlets in each cabin and (1) in engine room
- All galley and head receptacles are GFI protected
- Professional Mariner 50 Amp, 3-bank battery charger
- Onan generator - 20 hours
- Reverse cycle air conditioning below deck 12K BTU
- **12 VDC Electrical System**
- (3) 1000 CCA engine start batteries
- (2) 4D AGM deep cycle ship's service batteries
- Battery management panel located in companionway stairs - emergency crossover switch, ships power and starting batt. switches
- Illuminated main circuit breaker distribution panel w/battery condition gauge
- 12V Outlet at helm
- Additional 12 volt outlets - mate seat, above cabin hanging locker
- Lighting - danish cabin reading lights, cantalupi halogen in overhead, halogen at bar, courtesy lights
- Dimmer switch - bedside, galley and helm
- Search light w/controls
- Tinned wire throughout
- Lewmar V3 rope/chain windlass

Mechanical

- **Engine System**
- Twin Volvo D6 370hp diesel engines - Both engine displays are mounted on custom cut cherry "wedges" for better veiwng angle.
- Fresh water cooled (FWC)
- 1 3/4" stainless steel shaft
- PSS drip-less shaft seals
- Maganese bronze strut cutlass bearing
- Four blade NiBrAl propellers to ISO class S
- Seawater cooled 6" side exhaust system
- Groco bronze raw water intake strainers w/quick release plug
- Engine room blower
- Engine room vent ducts on deck side w/stainless steel grill
- Engine room floor w/teak grate
- White gelcoated engine room
- White Mylar faced foam noise 1 barrier
- Reverso oil changing system

- **Fuel System**
- 250 gal. diesel fuel tanks
- Racor fuel filters
- 2" "Diesel" stainless steel deck fill plate
- Fuel level indicator at helm
- **Steering and Trim**
- Teleflex hydraulic steering system
- Tilting Teleflex helm pump
- Vetus simulating mog steering wheel w/"Sabre" inset
- Twin bronze rudders w/adjustable tie-rod
- Twin stainless steel trim tabs
- Bow & Stern thruster
- **Fresh Water System**
- Water capacity approx. 80 gals. (Single Tank)
- 11 gal. Hot-Water heater off 110 V and engine
- Hot and Cold water pressure system - 12V
- Fresh water wash down in anchor locker
- Hot and Cold transom shower
- Shore water inlet
- Salt water wash down system fore and aft
- **Waste Disposal**
- Incremental tank gauge on head
- Polyethylene holding tank w/30 gal. capacity
- Jabsco quiet flush head
- Macerator pump on holding tank to overboard sea valve
- **Safety**
- Fire extinguishers - (3) at 2 1/2 lbs.
- Bonding system to safeguard against galvanic corrosion
- Automatic fire extinguishing discharge system w/override
- (3) Automatic 12 V electric bilge pumps
- (3) High water bilge alarms

Navigational Electronics

- Raymarine E120 Color Displays (2)
- Raymarine 4KW Radar
- Raymarine satellite weather receiver
- Raystar 125 GPS Receiver
- Simrad AP1615 Auto-Pilot with S1G Course Computer -Mounted on a custom cut cherry "wedge" for a better viewing angle.
- 600W Bronze Thru-Hull
- DSM 300 Digital Sounder
- ICOMM 502 VHF Radio - Mounted on a custom cut cherry "wedge" for a better viewing angle
- ACR RCL Spotlight

Additional Equipment

- Lewmar V3 windlass rope/chain windlass
- Composite radar mast
- Teak decking on helm deck
- Electric opening center windshield
- Clarion CD/AM/FM stereo system with (4) speakers and remote pad
- 12VDC outlet (2) - helm and fwd cabin
- (3) 12VDC dimmer switches for lighting
- Dark Blue hull color w/ Sabre White decks
- Beige anti-skid color deck
- Accord shades for opening ports
- Upgrade upholstery - Ultrasuede Cologne
- Upgrade engines to Volvo D6 370hp - 290hrs
- Side-Power bow thruster with wireless remote control
- Side-Power stern thruster with wireless remote control
- Reverso oil changing system
- Below deck air conditioning w/ reverse cycle heat
- Helm deck air conditioning w/ reverse cycle heat
- Incremental tank gauge on head holding tank
- Groco bronze engine intake strainers w/ quick release adapters
- Hot & cold transom shower
- Shore water inlet hook-up
- Salt water wash down system fore & aft
- Aft canvas enclosure for helm deck area w/ zip-up door and window
- Cockpit seat canvas cover
- Helm deck table canvas cover
- Cantalupi "Concorde" amber bulkhead light

DisclaimerThe Company offers the details of this vessel in good faith but cannot guarantee or warrant the accuracy of this information nor warrant the condition of the vessel. A buyer should instruct his agents, or his surveyors, to investigate such details as

the buyer desires validated. This vessel is offered subject to prior sale, price change, or withdrawal without notice.

PRESENTED BY

SCOTT MACLEAN

CELL 207-318-0627

OFFICE 207-773-7632 x289

scott@dimillos.com

