

2005 Back Cove 26 Open **\$95,000**



2005 Back Cove 26 Open

Madison, a 2005 Back Cove 26 Open, is powered by a common-rail electronic diesel, the Volvo D4 260hp engine (only 410 hours). Since the inception of the 26, it has earned a reputation as an economical and quality Maine built boat while offering great interior/exterior features for short or even long-term adventures. With the amazing fuel efficient 260hp D4 Volvo, this 26 has the fuel range of 240 NM cruising at 24 knots while only burning 9.0 GPH and giving her a 2.7 NM/G. It is simply hard to find a better built boat in her size & class with the same amenities, space and fuel efficiency. In addition, *Madison* is certainly a head-turner in any harbor while sporting her beautiful claret hull.

Her amenities include bow thruster and stern thrusters, radar arch, electric anchor windlass, oil changer, 1800W inverter w/ third battery in bank, Raymarine chartplotter, radar, bimini top with enclosure, swim platform, helm deck jump seats, electrically operated engine hatch, electric head & toilet system, three-wiper windshield system and more.

For complete information, ownership history and showings, please contact the Listing Broker below.

BASIC INFORMATION

Manufacturer:	Back Cove	Model:	26 Open
Year:	2005	Category:	Power
Condition:	Used	Location:	Portland, US
Vessel Name:	Madison	Hull Material:	Fiberglass
Designer:	The Back Cove Design Team		

DIMENSIONS & WEIGHT

Length:	26 ft	Beam:	9.33 ft
----------------	-------	--------------	---------

Draft - max: 2.5 ft

ENGINE

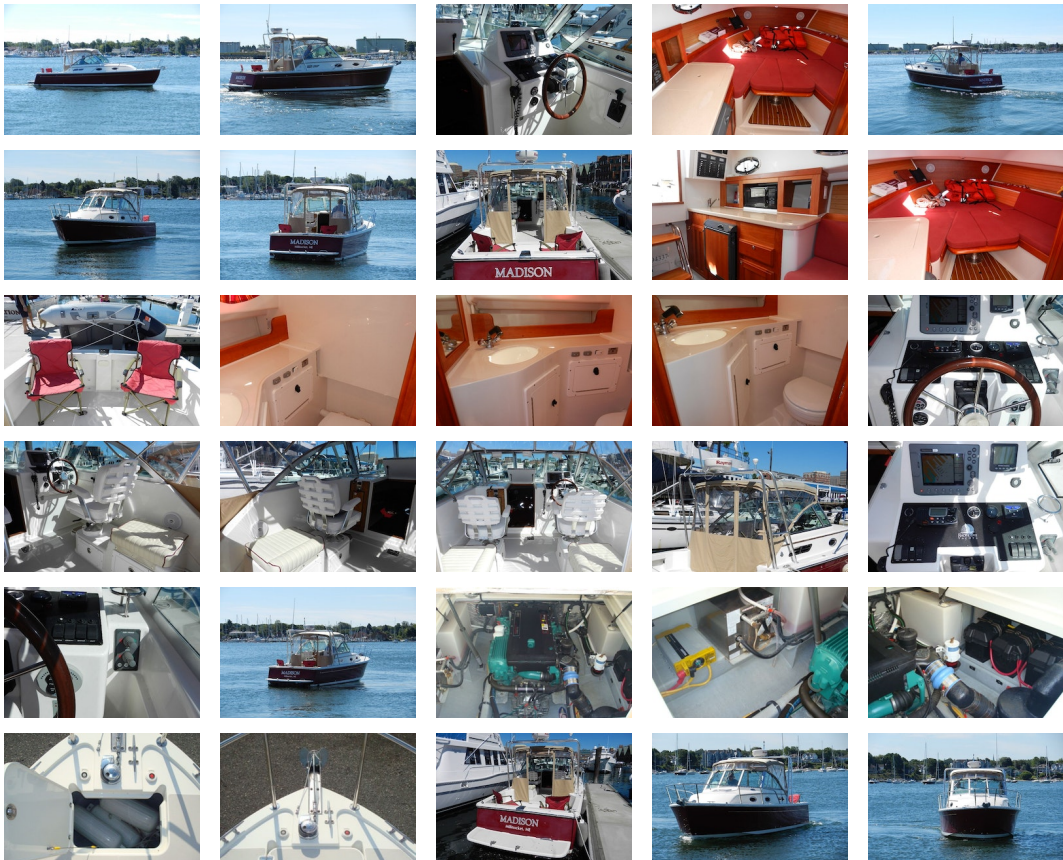
Make:	Volvo Penta	Model:	D4 electronic common-rail
Engine(s):	1	Hours:	410
Cruise Speed:	23 kn	Range:	287.69 mi
Engine Type:	Inboard	Drive Type:	Direct
Fuel Type:	diesel	Horsepower:	260 horsepower

TANK CAPACITIES

Fuel Tank:	100 gallon - 1 tank(s)	Fresh Water Tank:	30 gallon - 1 tank(s)
Holding Tank:	30 gallon - 1 tank(s)		

ACCOMODATIONS

Total Cabins:	1	Total Heads:	1
----------------------	---	---------------------	---



Cabin

- Cherry wood interior
- Dinette with backrest cushions
- Cherry table w/ birds-eye maple inlay

- Vee berth with filler cushion
- Shelves above berth
- Reading lights in dinette/ berth area
- Ash hull ceiling
- Teak and holly soles
- Overhead lighting
- Stainless steel opening ports with screens
- Storage under Dinette and forward berth

Galley/Head

- Galley
- Origo single burner stove
- Front opening DC refrigerator
- Microwave oven
- Galley sink with single lever faucet
- Hot and cold pressure water
- Solid surface countertop
- Countertop cabinet with sliding doors
- Door below counter
- Head
- Electric Jabsco Quiet Flush
- Built-in vanity with sink
- Mirror
- Pull out single lever faucet/ shower
- Shower drain/ pump system
- MSD w/ macerator and holding tank
- Macerator for overboard discharge
- Pump out fitting on deck
- Stainless steel opening port with screen

Raymarine Electronics

- Raymarine C80 chartplotter
- Raymarine DSM300 digital depth sounder
- Raymarine 2kW radar scanner
- B744V bronze transducer with fairing block
- Raystar 125 GPS receiver
- Ray 54 VHF radio
- 8ft. Shakespeare VHF antenna

Electrical

- 1800W Inverter
- AC and DC control panel with polarity indicator
- DC breakers for electronics
- 110VAC 30 amp shorepower with 50 foot cord set
- Galvanic isolator
- Battery charger
- (3) 31 DCM batteries
- (2) 12VDC bilge pump
- 12V outlet at helm
- Bonding system w/ zinc anode
- Cockpit courtesy lights
- GFI protected 110V circuits

Mechanical

- Upgraded from standard engine, Volvo electronic D4 260hp
- Electronic engine shift & throttle control
- Electric engine hatch, up/down switch 12V
- Engine control panel with alarms and hour meter
- Internal sea strainer
- Racor Fuel Filter
- Engine room light
- 1.5" Aquamet or equal shaft
- 4 Blade bronze propeller
- Dripless shaft seal
- Trim tabs
- Hydraulic steering
- Hot and Cold pressurized water (engine heated)
- SidePower bow thruster & stern thruster with joystick control
- Marelon sea valves on underwater thru hulls

- Fuel tank
- Fireboy extinguisher system
- Macerator with overboard discharge

Deck

- Claret red gelcoat with white boot stripe
- Gold leaf cove stripe
- Radar arch
- Molded in contrasting anti-skid on walk surface
- Port and starboard molded steps leading to side and fore deck
- Accent stripe
- Hatch in main salon with screen
- Opening Port lights with screens
- Clear anodized aluminum windshield with side vent panels and integral handrails
- Windshield wipers (3) electric
- Horn
- Compass, illuminated
- Running lights
- Anchor locker
- Mooring cleats
- Custom 1" 316L stainless steel bow rail
- Swim platform
- Swim ladder
- Self bailing cockpit

Additional Equipment

- Volvo D4 electronic 260hp electronic diesel
- Electronic engine shift control
- SidePower Stern thruster
- SidePower Bow thruster
- 3-wiper windshield system
- Claret hull
- Interior cushions - custom Citizen Claret fabric
- Electric Anchor windlass
- Oil changing system
- Electric engine hatch
- Helm deck jump seats w/ storage
- Swim platform
- Cockpit shower
- 1800W Inverter
- Electric head
- Pop-up stern cleats
- Bimini top with eisenglass enclosure
- Radar arch

Disclaimer The company offers the details of this vessel in good faith but cannot guarantee or warrant the accuracy of this information nor warrant the condition of the vessel. A buyer should instruct his agents, or his surveyors, to investigate such details as the buyer desires validated. This vessel is offered subject to prior sale, price change, or withdrawal without notice.

PRESENTED BY

PETER OUELLETTE

CELL 207-318-0626

OFFICE 207-773-7632 x285

peter@dimillos.com

