

2003 Albin 35 Command Bridge **\$199,000**



New Listing, This vessel has been meticulously cared for by its original owner. Fully equipped with air conditioning, heat, generator, Vacuflush toilet, separate stall shower, superb RayMarine electronics including radar overlay, and auto pilot. A fast boat for a single engine and surprisingly fuel efficient even with its 17-18 knot cruising speed. The Albin 35 Command Bridge gives the 360° visibility of a flybridge yet the cockpit is only a few steps away which allows for better communication and easy access. The lower profile of the command bridge provides enhanced stability over similar boats her size. The integrated swim platform and the added St Croix davits allow you to hang your inflatable and motor from the transom ready to launch and retrieve in a moments notice with single person ease. This vessel has been stored in heated indoor storage every winter since new. Please call our office today for your own private showing. She won't last long.

BASIC INFORMATION

Manufacturer:	Albin	Model:	35 Command Bridge
Year:	2003	Category:	Power
Condition:	Used	Location:	Danversport, US
Vessel Name:	2003 Albin 35 Command Bridge Tri-Cabin	Hull Material:	Fiberglass
		Designer:	Terry Compton

DIMENSIONS & WEIGHT

Length:	35 ft	Beam:	12.25 ft
Draft - max:	3.83 ft	Bridge Clearance:	16.42 ft

ENGINE

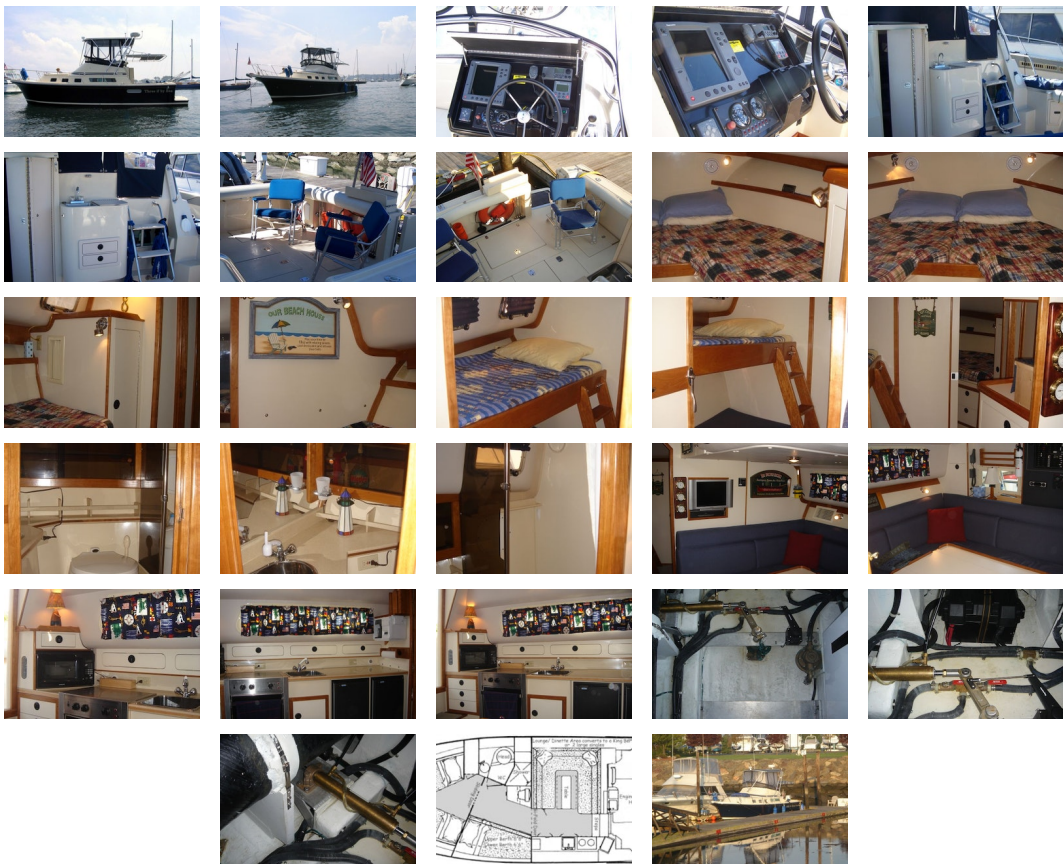
Make:	Yanmar	Model:	6LYA-STP
--------------	--------	---------------	----------

Engine(s): 1 **Hours:** 430
Fuel Type: diesel **Max Speed:** 22 kn

TANK CAPACITIES

Fuel Tank: 260 gallon - 1 tank(s) **Fresh Water Tank:** 117 gallon - 1 tank(s)
Holding Tank: 20 gallon - 1 tank(s)

ACCOMODATIONS



Dimensions Displacement: 15,000

Engines Total Power: 370hp Cruising Speed: 17-18 knots

Interior Cabins/Galley Area

- Stainless Steel Sink with Pressurized Water System
- Hot Water Heater, Heated by Engine and 110V
- Microwave, 110V
- Coffe-Maker, 110V
- 2-Burner Electric Stove w/Oven
- Twin (2) Refrigerators, 12V/110V
- Full Sized Head with Vacu-Flush Toilet
- Separate Shower Stall with Molded Seating
- Aft-Cabin Salon Dinette Seating Area(converts to a KING size Bed)
- Accent Lighting in Cabin & Head
- Courtesy Lights in Cabin & Head
- Adequate Drawers, Cupboards and Lockers Throughout

- AM/FM Stereo CD Player
- Flat Panel TV with DVD Player

Hull, Deck & Cockpit

- Live Bait well with Recirculating Salt Water Pump
- Fresh & Salt Water Washdown System
- Command-Bridge Windscreen with Stainless Steel Grab Rail
- Upholstered, Adjustable Helm Seat
- Upholstered Companion Sofa
- Tilt Wheel
- Drink Holders on the Bridge
- Fresh Water Sink & Chopping Block in Cockpit
- Port & Starboard Rod Storage
- Courtesy Lights, Cockpit & Bridge
- Lazarette Hatch with Drop-in Box
- 3 Large Separate Engine Access Hatch's
- Large, Mooring Bit & (8)10" Cleats
- Molded, Non-Skid Deck Surfaces
- Transom Door
- Self Bailing Cockpit
- Twin Horns
- Shore Supply Outlet, 110V
- Twin Hatches to Self Bailing Anchor Rope Locker
- Twin Fish Boxes in the Aft Cockpit
- Trim Tabs
- Bow Pulpit with Recessed Anchor Fitting and Roller
- Grab Rails on Forward Cabin Roof and Command Bridge w/Handrail
- Bi-Fold Companionway Door w/Bomar Hatch
- Opening Ports w/Screens; Forward Cabin Ventilation Hatch
- Sliding Windows in Dinette Area

Mechanical/Electrical

- Bow Thruster with Electronic Control
- Hydraulic Steering with Padded Tilt Wheel
- Balanced, Bronze Rudder attached to Full Skeg
- Morse Type Controls for Throttle & Gear
- Interior Circuit Breaker Panel
- 110V Duplex Outlets w/GFI Protection Throughout
- Shower Sump Pump
- 3-Automatic Bilge Pumps, 1-Manual Bilge Pump
- 50 AMP Battery Charger/3-Gell Cell Batteries w/Switches
- Aquamet 22 Stainless Steel Shaft
- NiBral 4 Blade Prop
- Bronze Seacocks

Electronics

- RL80C 10.4" Color Display Including GPS Chart-Plotter, Fish-Finder, and Radar with Radar Overlay Display
- Raymarine 215 DSC VHF Radio
- Raymarine 230 VHF Remote Mic & Speaker in the Cabin
- Smart Pilot ST6001 Auto-Pilot
- Radome 24" 4Kw Radar Scanner
- Raymarine Heading Gyro Electronic Compass
- DSM 250 Digital Sounder Module

Additional Equipment

- 6.5Kw Onan Generator
- Marine-Air Heat & Air Conditioning
- Vetus Bow-Thruster
- Bennett Trim Tabs
- SeaLand VacuFlush Fresh Water Toilet
- St. Croix Davits allow one person launch and retrieval of inflatable and motor
- Blue Sunbrella Canvas and Strataglass Enclosure on Premium Custom Built Tower with Cockpit Hinged Cover
- Guest 298 Remote Controlled Spot/Flood Light
- Power Windlass with Deck Foot Controls and Helm Station Controls

CommentsThe 35 Command Bridge has been refined over the years but this particular boat is the hard to find Tri-Cabin layout. In this tri-cabin layout, a cruising family or three couples can enjoy the privacy of the individual cabins. The forward cabin has a very

large v-berth, with the fill-in cushions making it larger than a king size bed. The mid cabin has bunk beds to accommodate two adults or two children. The galley has a center dinette that converts into a king-size berth to accommodate even more overnight guests if needed. The galley includes two refrigerators, range and oven, microwave, coffee maker, flat screen television, DVD Player, generous cupboard and drawer storage, and lots of corian counter space. The speed range is 17- 22 knots with the powerful Yanmar 370 hp single diesel and a bow thruster. This allows for a more economical operation with fuel and maintenance, while being as maneuverable as a twin in tough docking situations. Another benefit is the full skeg keel which protects the rudder and propeller and adds to the excellent tracking of this vessel.

DisclaimerThe Company offers the details of this vessel in good faith but cannot guarantee or warrant the accuracy of this information nor warrant the condition of the vessel. A buyer should instruct his agents, or his surveyors, to investigate such details as the buyer desires validated. This vessel is offered subject to prior sale, price change, or withdrawal without notice.

PRESENTED BY

SCOTT MACLEAN

CELL 207-318-0627

OFFICE 207-773-7632 x289

scott@dimillos.com

