

2009 Sabre 38 Hardtop Express with Volvo IPS

Price Upon Request



Elegant, traditional designs, luxurious accommodations and excellent performance are the hallmarks of the Sabre 38 Express. Quiet and economical to operate, the Sabre 38 will impress the most experienced yachtsman.

The helm deck is a careful study in ergonomics. Surrounded by large opening windows and overhead hatches for maximum ventilation and light. Views for the helmsman and crew are virtually unobstructed. The Stidd helm and mate's chairs, covered in Ultraleather upholstery, provide a degree of comfort rarely found in other boats. To add to cruising comfort, Sabre's engineers have reduced noise and vibration levels substantially with a careful study of engine room ventilation and insulation.

Wide side decks with large diameter stainless steel hand rails, standard rope chain windlass and highly polished aluminum hatches all add to the beauty and functionality of her deck. A large anchor roller makes anchoring work a breeze.

An optional hard back enclosure closes off the helm deck from the cockpit with the addition of two elegant curved windows in the corners, a sliding window to port and an aluminum entry door.

Below decks her hand-crafted cherry interior adds to the sense of luxury, evident throughout. The stateroom berth is low and wide, making it both comfortable and easy to access. A pocket door separates the salon and stateroom while the head with stall shower has private access from the stateroom and from the salon.

The main salon is configured with a long L-shaped settee and, her maple-inlaid salon table drops to form a guest berth. A standard thin screen TV and DVD player are recessed in to the furniture of the main cabin bulkhead.

Her well equipped galley offers an electric cook top, convection microwave oven and coffee maker as well as ample storage for extended voyages.

BASIC INFORMATION

Manufacturer:	Sabre	Model:	38 Hardtop Express with Volvo IPS
Year:	2009	Category:	Power

Condition:	New	Location:	Freeport, US
Vessel Name:	2009 Sabre 38 Hardtop Express w Volvo0027s IPS	Hull Material:	Fiberglass
		Designer:	Sabre Yachtu0027s Design Team

DIMENSIONS & WEIGHT

Length: 38 ft

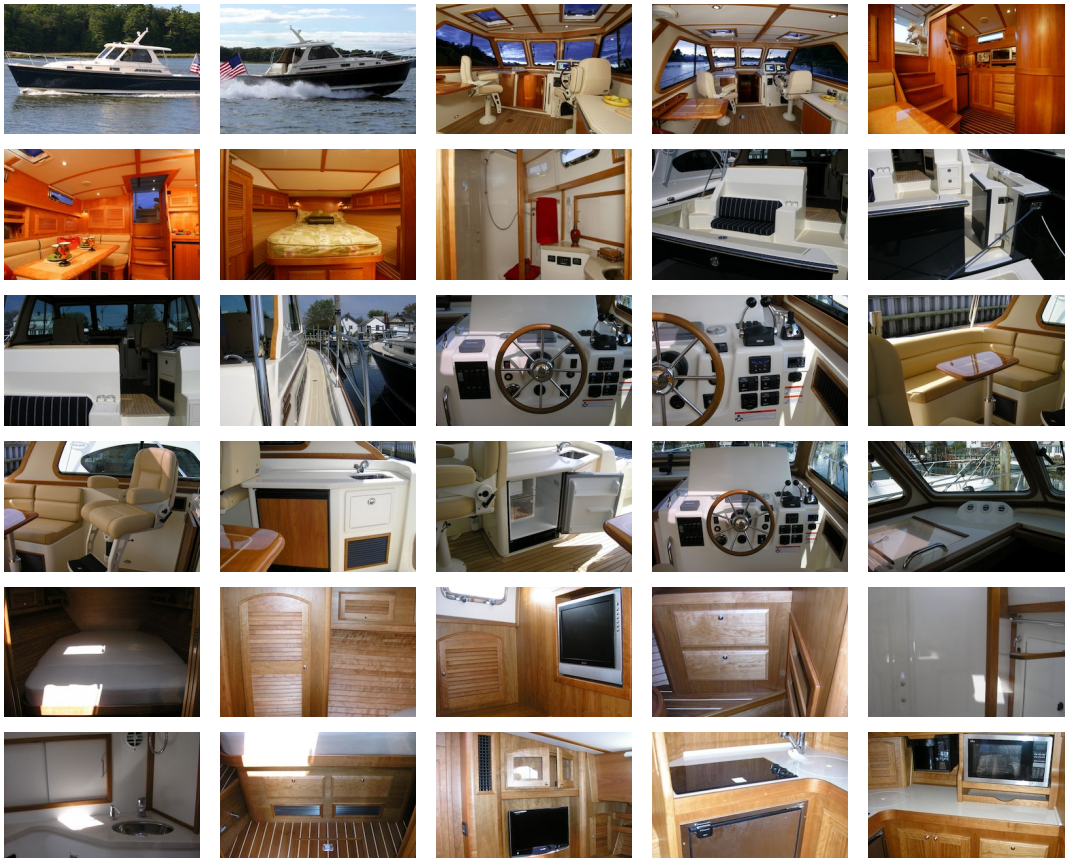
ENGINE

Make:	Volvo	Model:	D6
Engine(s):	2	Cruise Speed:	27 kn
Fuel Type:	diesel	Max Speed:	31 kn

TANK CAPACITIES

Fuel Tank:	- tank(s)	Fresh Water Tank:	- tank(s)
Holding Tank:	- tank(s)		

ACCOMODATIONS





Dimensions Beam: 13'8" Max Draft: 3'4" Displacement: 21,500

Engines Total Power: 330

Tanks Fuel: 350 Fresh Water: 100 Holding: 40

Accommodations

- FORWARD STATEROOM
- Spacious Island Berth layout with 5" cushion. ¾" laminated trim.
- Cherry hull ceilings.
- 2 Drawers under bed. A/C return grills under drawers.
- 2 drawers in bureau w/locker w/shelf above and single louvered door.
- Upper enclosed shelves with storage behind.
- Locker face to have 2 louvered doors. Each door to access partitioned space with shelves in the aft two compartments. Doors hinged at bottom.
- Recessed shelf with fiddle on starboard main bulkhead sized for 17" flat panel TV option.
- Large Hanging Locker to port, cedar lined with cedar shelf and hangar pole, Open shelf above, Louvered door.
- Teak and holly sole with 2 coats of sealer.
- Soft headliner panels.
- Large pocket door between salon and forward cabin.
- UPPER HELM DECK
- Stidd helm and mate's seat
- Standard wood in helm area is cherry
- Sliding companionway hatch (smoked)
- Bi-fold teak companionway door
- Clear chart locker cover
- Wet bar with solid surface laminate bull nosed edge will overhang cabinet below.
- U-Line Ice Maker/ Refrigerator model COMBO-29FF, surface mounted.
- Forward facing bench with footrest.
- Dry storage below.
- Folding table from port cockpit bulkhead approx. 18 x 34
- Lewmar sliding hatches overhead with roller shades
- SALON
- "L" settee converts to double berth, 4 1/2" foam cushions.
- Storage under settee
- (2) enclosed lockers outboard with open shelf and removable fiddle forward.
- Master AC/DC breaker panel facing fwd on aft bulkhead behind pair of louvered doors.
- Fwd starboard bulkhead forms entertainment center space for standard 20" flat LCD TV and DVD Player as well as chase for optional air conditioning duct and discharge grill.
- Salon table on (2) hi- low pedestals which lowers to form berth filler.
- Bottle storage locker
- Teak and holly sole w(2) coats of sealer.
- Sound deadening headliner panels.

Galley/Head

- GALLEY
- High pressure laminate galley counter.
- Stainless steel sink with Scandvik faucet.
- Built-in waste basket
- Drawers and storage lockers below counter.
- Storage cabinets outboard and above aft counter
- Coffee Maker (Space Saver overhead mount)
- Two burner electric cook top with separate convection microwave.
- Taylor Tundra 4.2 Refrigerator/Freezer 12DC/120VAC
- HEAD
- Stainless sink
- Circular shower stall with seat and locker outboard.

- Hot and cold pressure water.
- Electric shower sump pump.
- Storage lockers.
- Corian counter with bull nose
- Towel bar.
- Wood trimmed mirror over sink
- Ventilation blower.

Mechanical

- STANDARD ENGINE/GEN SET SYSTEM
- Twin Yanmar 380hp 6LY3A-UTPelectronic diesel engines 5.2 liter 6 cylinder , fresh water-cooled Includes Yanmar electronic controls
- ZF 220-A Transmission
- 1 3/4" Aquamet 22 stainless steel shaft
- PSS drip-less shaft seals
- Manganese bronze struts with cutlass bearing
- Four blade NiBrAl propellers to ISO Class S
- 80Amp, 12V alternators each engine
- Seawater cooled 5" side exhaust system
- Groco raw water intake strainers
- Engine room blower
- Engine room vent ducts
- Engine room floor with gray anti-skid rubber
- White gelcoated engine room
- Foil face foam noise barrier
- Onan 9.0Kw EQD generator
- FUEL SYSTEM
- Single 350 gal aluminum diesel fuel tank
- Racor fuel filters
- 2" "Diesel" deck fill plate
- Fuel Level Indicator at helm
- STEERING AND TRIM SYSTEMS
- Teleflex hydraulic steering system(BA135-7ATM cylinder)
- Tilting Teleflex helm pump
- Twin bronze rudders w/adjustable tie-rod. (1 3/8" dia rudder post)
- Twin Bennett stainless steel trim tabs
- HELM STATION
- Yanmar single lever electronic controls
- Engine Start/Stop control panel
- Custom gauge panel to include for each engine: tachometer w/hour meter, engine temperature, engine oil pressure,transmission oil pressure, voltmeter, Water in fuel warning light
- Hi water temp and low oil pressure alarm
- Triple windshield wipers with washers
- Ritchie Compass
- Fuel gage
- Switch controls for horn, running lights, anchor light, engine room blower and optional equipment control for red instrument lights w/dimmer
- Vetus custom mahogany steering wheel

Electrical

- 120VAC ELECTRICAL SYSTEM
- Two 30 A. AC shore power inlets and two 50 ft. cords
- Galvanic isolator w/monitoring system
- Illuminated main circuit breaker
- distribution panel.
- 120V outlets in each cabin and one in engine room.
- All galley and head receptacles are GFI protected.
- Additional outlets positioned in locations appropriate for entertainment systems in main cabin and fwd cabin, One outlet located on the upper helm deck.
- Professional Mariner 50amp, 3-bank battery charger
- Below deck reverse cycle heat/ air conditioning in (2) zones.
- 12VDC ELECTRICAL DISTRIBUTION SYSTEM
- Two 1000 CCA dedicated engine starting batteries.
- Two 4D 210 AH deep cycle ship's service batteries.
- Battery Management panel including Emergency crossover switch.
- Ships power switch
- Starting Battery switch
- Illuminated main circuit breaker distribution panel w/battery condition gauge
- Lighting: Danish Cabin reading lights, Cantalupi halogen lights in the overhead, Halogen bar lighting in appropriate locations, Improved engine room lighting, Cockpit courtesy lights w/remote switch at transom door
- Tinned wire throughout.

Hull/Deck

- HULL COMPOSITE
- Deep "V" Planing hull design with Shallow prop pockets.
- 23 degree deadrise amidships and 16 degrees at transom.
- ISO NPG Sport Yacht white gelcoat w/ vinylester back-up resin.
- Knitted Biaxial Structural E-Glass Reinforcements
- Vacuum Bagged Divinycell foam core in hull bottom and topsides.
- Foam/plywood cored fiberglass stringer system.
- Swim platform with under mounted telescoping ladder.
- Hull side rubbing strakes.
- PVC rub rail with stainless steel cap.
- Painted (IMRON) Double Boot Strip
- Gold Cove Stripe
- DECK, WINDSHEILD AND HARDTOP COMPOSITE
- ISO NPG gelcoat
- Knitted Biaxial Structural E-Glass Reinforcements with balsa coring.
- Molded in anti-skid deck surfaces.
- Windows with clear anodized frames recessed into hard top
- Inside walls sheathed w/high pressure laminate
- Hardtop w/ anti-skid surface on top
- In-swinging Transom Door with latch system
- Fiberglass bow pulpit with single anchor roller and windlass
- Anchor locker w/Southco slam latch #M1-64-8
- (1) Large Aft hinged double sided lazarette locker hatch with gas struts and Southco (2) 3" dia compression latches
- (1) Large double-sided Engine Room hatch with 3" compression latches, and heavy SS hinges
- Hinged helm pod
- Center opening windshield

Additional Equipment

- Volvo IPS - 450 Propulsion system
- FRP molded electronics mast for hardtop
- Teak deck on helm deck area
- Electrically operated center opening windshield
- Short L-settee retaining port side Stidd seat (without fixed table)
- Clarion CD/FM/AM stereo w/four speakers and remote control
- 15" LCD TV in fwd berth wired to salon DVD player
- Dark hull colors - Flag Blue
- Anti-skid color (fore & side deck, coach roof, aft cockpit, coamings, hardtop, upper helm deck and recessed area of swim platform) - Sabre white deckeige anti-skid
- Accord shades on all opening ports
- Corian counter in galley
- Ultrasuede upholstery in main salon only
- Side Power bow thruster Model SP75T
- Helm deck air conditioner/heater 2 x 12 K BTU
- Groco engine intake valves w/quick release plug & service adapter
- Reverso Oil Change system
- Incremental tank gauge on head
- Hot and cold transom shower
- Salt water wash down system fore and aft
- Fresh water wash down forward
- Shore water inlet
- Single Seagull water purifier on galley cold water
- Single Seagull water purifier on ice maker
- Memory foam on FWD Berth (mattress ticking upholstery)
- Starboard side companionway, provide handle similar to the starboard handle on port side of companionway
- (2) custom cherry towel rods on inside of aft door to head - one above upper panel and one in the middle
- Mirror in upper and lower panel of fwd head door, inside head
- Free-standing scissor leg table w/mounting bracket

Disclaimer The Company offers the details of this vessel in good faith but cannot guarantee or warrant the accuracy of this information nor warrant the condition of the vessel. A buyer should instruct his agents, or his surveyors, to investigate such details as the buyer desires validated. This vessel is offered subject to prior sale, price change, or withdrawal without notice.

