

2005 Mainship 34 Trawler Price Upon Request



A beautiful Flag Blue hull and the power of choice, a twin 240 Yanmar. Her accommodations will include some of the following items: air conditioning w/ heat, bimini top w/ enclosure, bow thruster, central vac, convertible sofa, driplless shaft log, 8.0kw Kohler generator w/ sound shield, internal sea strainers, lounge chairs (2), lower helm station, oil changer, raw water wash down, spotlight, flybridge stereo, 2-burner propane, swim platform, vacuflush, windlass, and a complete Raymarine electronics package. To learn more about the new 34 Trawler or to schedule a sea-trial, call our office today.

BASIC INFORMATION

Manufacturer:	Mainship	Model:	34 Trawler
Year:	2005	Category:	Power
Condition:	New	Location:	Available March u002705, US
Vessel Name:	Available March 2005	Hull Material:	Fiberglass

DIMENSIONS & WEIGHT

Length:	34 ft	Beam:	14.17 ft
Draft - max:	3.33 ft	Bridge Clearance:	16.42 ft

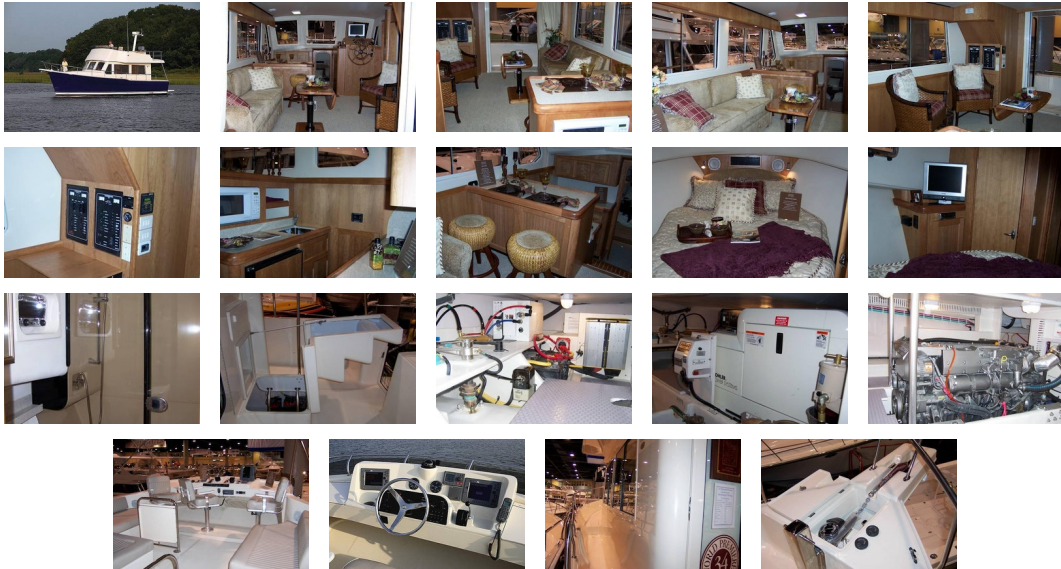
ENGINE

Make:	Twin Yanmar	Model:	4LHA-STP
Engine(s):	2	Cruise Speed:	16 kn
Fuel Type:	diesel	Max Speed:	18 kn

TANK CAPACITIES

Fuel Tank:	250 gallon - 1 tank(s)	Fresh Water Tank:	70 gallon - 1 tank(s)
Holding Tank:	30 gallon - 1 tank(s)		

ACCOMODATIONS



Engines Total Power: 240 hp

Deck, Bridge, and Cockpit

- Anchor Locker
- Bow Rail – Custom 316L Stainless Steel
- Cleats – Bow, Stern and Spring
- Courtesy Lights – Cockpit, Bridge and Deck
- Cockpit Storage
- Compass
- Engine Hour Meter(s)
- Engine Instrumentation – Tachometer, Voltmeter, Oil Pressure and Temperature Gauge
- High Density Rub Rail w/Stainless Steel Insert
- Safety Rails – Stainless Steel
- Companionway Door
- Bridge Seating for Eight
- Venturi Windshield
- Molded Steps To Bridge
- Folding Radar Mast

Head/Galley

- All Molded Fiberglass Head for Durability and Ease of Cleaning
- Built-In Vanity
- Electric Toilet w/Holding Tank
- Shower – Hot & Cold
- Shower Sump Pump
- Mirror
- Power Ventilator
- Waste Tank Monitor
- Galley
- Corian Counters
- Designer Faucet
- Oversize Galley Sink
- 2 Burner Range (Electric)
- Refrigerator/Freezer, AC/DC
- Under-Counter Storage

- Microwave

Salon/Master Stateroom

- 15" Flat Screen TV w/DVD
- Full Windshield w/Wipers and Washers
- Halogen Lighting
- Opening Center Windshield
- Sliding Door to Cockpit
- Sofa
- Stereo System w/CD
- Aft Screen Door
- Master Stateroom
- Queen Berth w/Inner Spring Mattress
- High-Intensity Reading Lights (2)
- Cedar-Lined Hanging Lockers (2)
- Opening Hatch w/Screen
- Opening, Screened Portlights (2)

Electrical Equipment

- Battery Safety Switch
- Bonding System w/Zinc Anode
- Cable TV/Telephone Connection
- Circuit Breakers (AC/DC)
- Color-Coded Wiring Harnesses
- AC/DC Converter, 30-Amp
- Electric Bilge Pumps w/Auto Switch (2)
- GFCI Protection Throughout
- Interior Lights – 12 V
- (2) 50 Ft., 30 Amp Shorepower Cords
- AC and DC Control Panel
- Reverse Polarity Indicator
- Macerator w/Overboard Discharge
- Water Heater
- TV/Telephone Connection
- Color TV (Flat Screen)
- Water Tank Monitor
- Wire For Windlass

Mechanical

- Stainless Steel Shaft(s) – Aquamet
- Bronze Strut(s) and Rudder(s)
- Full Keel and Sand Shoe
- Engine Alarm System(s)
- Sea Strainer(s)
- Freshwater Cooling on Engine(s)
- Fuel Filter(s)
- Fire Extinguisher System
- Hot and Cold Pressurized Water
- Hydraulic Steering
- Seacocks on Underwater Thru-Hull Fittings
- Trim Tabs
- Welded Aluminum Fuel Tank

Additional Outfitting -Included

- Anchor and Anchor Line
- Dock Lines (4)
- Electric Horn
- Life Vests (6)
- Type IV Throwable PFD (1)
- Fenders
- Flare Kit
- Fire Extinguishers (2)
- Navigation Lights

Factory Optional Equipment All options in bold were ordered for our boat.

- Air Conditioning w/Reverse Cycle Heat

- Bottom Paint
- Bow Thruster
- Canvas Package and Full Enclosure
- Canvas Mesh Screen-Flybridge Aft Rail
- Cockpit Washdown – Freshwater
- Central Vacuum System
- Dockside Water Connection
- Everware Cherry and Holly Flooring
- Convertible Sofa
- Dripless Shaft Log(s)
- Flag Blue Hull
- Full Factory Commissioning
- Flat Screen TV, DVD, CD Stereo-FWD
- Generator w/Sound Shield
- Internal Sea Strainer(s)
- Lower Control Station
- Lounge Chairs-Salon
- Magma Grill
- Propane Stove - 2 Burner
- Rudder Angle Indicator
- Raw Water Washdown-FWD
- Spotlight
- Swim Platform w/Ladder
- VacuFlush Toilet w/Holding Tank
- Windlass
- X-Change-R Oil Change System

Comments Come see the new addition to the Mainship Trawler family. Call for complete details.

Disclaimer DiMillo's Old Port Yacht Sales offers the details of this vessel in good faith but cannot guarantee or warrant the accuracy of this information nor warrant the condition of the vessel. A buyer should instruct his agents, or his surveyors, to investigate such details as the buyer desires validated. This vessel is offered subject to prior sale, price change, or withdrawal without notice.

