

2005 Mainship 430 Aft Cabin Trawler

Price Upon Request



2nd Annual Open House - June 10th, 2006

On Display & Available for Sea Trials - Sabre Yachts, Back Cove Yachts, Mainship Trawlers, Chris-Craft, Eastern Boats & Select Brokerage.

Contact our Portland, Maine office for complete details.

Location: DiMillo's Old Port Yacht Sales, Portland, Maine

Time: 11am - 4pm

Rain date: Sunday, June 11th

At our docks. Our brand new 2005 Mainship 430 Trawler is powered by the preferred twin 370 Yanmars which will cruise her at 18 knots. The stunning Flag Blue hull features the all-popular "Expedition Package", full electronics "C" package by Raymarine, air/heat, genset, full bimini with 4-sided enclosure, two stateroom layout with two private heads, windlass, central vac, washer/dryer combo, galley down with larger refrigerator/freezer, 3-burner electric stove/oven, microwave, coffee maker, full entertainment center with 20" TV, VCR, CD changer, AM/FM receiver, nav station, plus a few more added features we thought would be nice while cruising, including a raised aft deck rail with bench seat as well as cherry& holly soles in both staterooms.

If you're looking for the living comfort, the cruising comfort, the spacious and natural-lighted salon, the private stateroom heads, the economical cruising range, the cruising speed to get there in time, and the affordable price...I would strongly suggest you to take a look at the Mainship 430 Trawler. Call today to learn more about this wonderful trawler.

BASIC INFORMATION

Manufacturer:	Mainship	Model:	430 Aft Cabin Trawler
Year:	2005	Category:	Power
Condition:	New	Location:	In Stock, Portland, US

Vessel Name:

2005 Mainship 43
Trawler

Hull Material:

Fiberglass

DIMENSIONS & WEIGHT

Length: 43 ft **Beam:** 15.5 ft
Draft - max: 3.67 ft

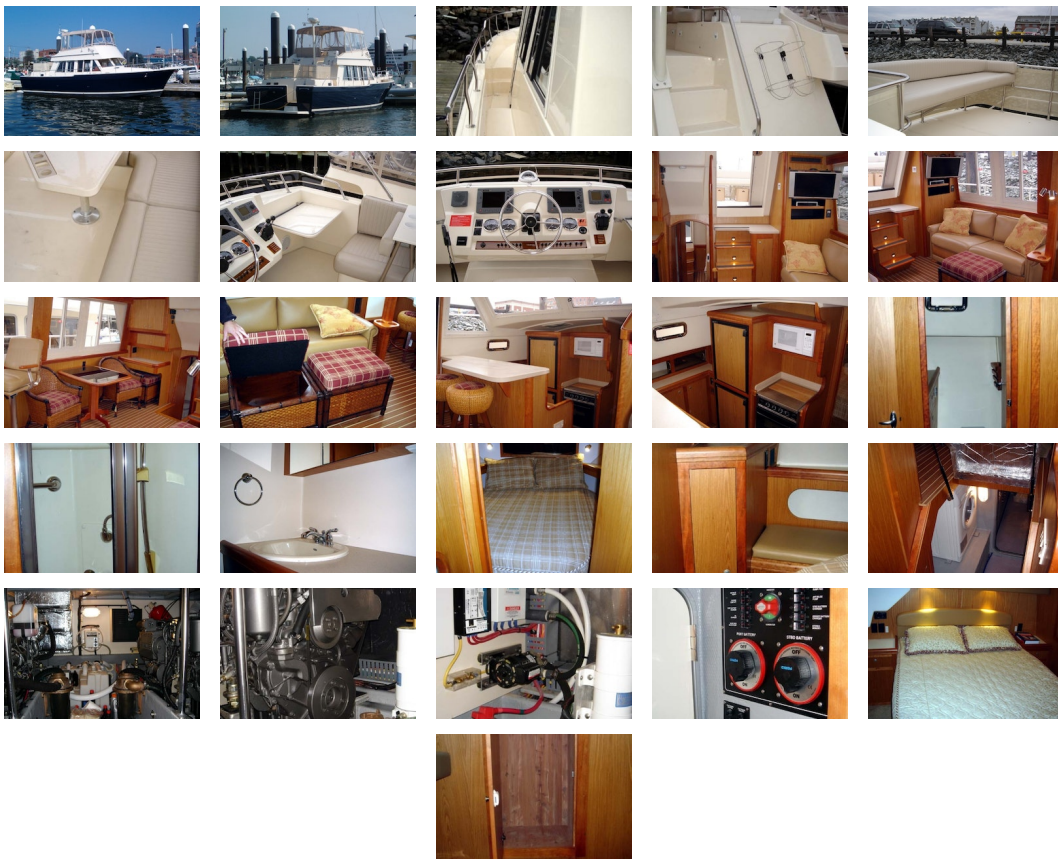
ENGINE

Make: Twin Yanmars **Model:** 6LYA-STP
Engine(s): 2 **Cruise Speed:** 18 kn
Fuel Type: diesel **Max Speed:** 22 kn

TANK CAPACITIES

Fuel Tank: - tank(s) **Fresh Water Tank:** - tank(s)
Holding Tank: - tank(s)

ACCOMODATIONS



TanksFuel: 500Fresh Water: 250Holding: 60

Accommodations

- Salon
- Everware Laminate Teak and Holly floor
- Cherry Doors
- 15" Flat screen TV wired for cable
- Interior Lighting
- Large Sliding Doors to Side Decks
- Lower Station w/Full Instrumentation
- Opening Center Window
- Sliding Windows w/Screens
- Bose 3-2-1 Stereo System w/ CD & DVD player
- Master Stateroom
- Cedar-Lined Hanging Lockers (2)
- Direct Cockpit Access Door
- Drawers Under Berth
- High Intensity Reading Lights (2)
- Island Queen Bed w/Inner-Spring Mattress
- Mirror
- Opening, Screened Stainless Steel Portlights
- Storage Under Berth Sides
- FWD Guest Stateroom
- Cedar-Lined Hanging Locker
- Direct Cockpit Access Door
- Drawers Under Berth
- High Intensity Reading Lights (2)
- Island Queen Bed w/Inner-Spring Mattress
- Mirror
- Opening, Screened Stainless Steel Portlights
- Storage Under Berth Sides

Galley/Head

- Galley
- Coffeemaker
- Corian Counters
- Designer Faucet
- Microwave
- Overhead Cabinets
- Oversize Double Galley Sink
- Refrigerator/Freezer
- Three Burner Range w/Oven
- Water Tank Monitor
- FWD & Aft Head
- All Molded Fiberglass Head –
- Durable and Easy to Clean
- Built-In Vanity w/Corian Top
- Electric Toilet w/Holding Tank
- Opening, Screened Portlight
- Separate Stall Showers w/Door –Fwd and Aft Heads

Electrical

- AC/DC Converter, 50 Amp
- AC and DC Control Panel
- Air Conditioning/Heat System (3 Zone)
- 50 Ft., 50 Amp Shorepower Cord –
- Fwd & Aft Connections
- Battery Safety Switches
- Bonding System w/Transom-Mounted Zinc Anode
- Circuit Breakers (AC/DC)
- Color-Coded Wiring Harnesses
- Electric Bilge Pumps w/Auto Switch (4)
- GFCI Protection Throughout
- Generator – 8.0 KW Diesel
- Interior Lights
- Macerator w/Overboard Discharge
- Navigation Lights
- Reverse Polarity Indicator
- Water Heater

Hull/Deck

- Anchor Pulpit with Roller
- Cable TV/Telephone Connection
- Canvas Packages
- Cleats – Bow, Stern and Spring (2)
- Compass (2)
- Courtesy Lights – Cockpit, Bridge and Deck
- Engine Instrumentation Upper & Lower – Tachometer, Voltmeter, Oil Pressure and Temperature Gauges
- Flybridge Seating for 6+
- Low Profile Bow Rail – Custom 316L Stainless Steel
- High Density Rub Rail w/Stainless Steel Insert
- Molded Steps to Bridge
- Molded Swim Platform w/Ladder
- Radar Mast
- Safety Rails – Custom 316L Stainless Steel
- Sliding Companionway Door
- Split Compartment Anchor Locker
- Swim Platform Shower – Freshwater
- Table on Bridge
- Venturi Windshield
- Chart Table
- Glove Box
- 2 Fender holders
- Portable Ice chest
- Aft Deck Magma Gas Grill

Expedition Package

- Air Conditioning with Heat
- Canvas Package - bimini top with 4-sided enclosure
- Central Vacuum System
- Everware Laminate Cherry & Holly Flooring in main salon
- Electronics Packages "C"
- Engine Synchronizer
- Generator 8.0kW Kohler genset
- Internal Sea Strainers
- Washer/Dryer
- Windlass
- X-Change-R Oil Change System

Mechanical

- Bronze Struts and Rudders
- Engine Alarm System
- Engine & Genset Mufflers
- Fire Extinguisher System
- Freshwater Cooling on Engines
- Fuel Filters
- High Capacity Welded Aluminum Fuel Tanks
- Hot and Cold Pressurized Water
- Hydraulic Controls
- Hydraulic Steering
- Hydraulic Trim Tabs
- Sea Strainers
- Seacocks on Underwater Thru-Hull Fittings
- Stainless Steel Shafts – Aquamet

Additional Equipment-Included

- Anchor and Anchor Line
- Bottom Paint
- Dock Lines (4)
- Electric Horn
- Fenders (4)
- Fire Extinguisher (2)
- Flare Kit
- Life Vests (6)
- Navigation Lights
- Type IV Throwable PFD (1)
- "Captain for a Day" Lessons
- Full Tank of Fuel

Factory Order Options

- Convertible Sofa
- Dripless Shaft Logs
- Everware Laminate Cherry & Holly Flooring - aft & fwd. soles
- Flag Blue Hull
- Raised Aft Deck Rails w/Mesh Canvas
- Stereo on the Flybridge

Disclaimer DiMillo's Old Port Yacht Sales offers the details of this vessel in good faith but cannot guarantee or warrant the accuracy of this information nor warrant the condition of the vessel. A buyer should instruct his agents, or his surveyors, to investigate such details as the buyer desires validated. This vessel is offered subject to prior sale, price change, or withdrawal without notice.

