

2016 Pursuit C 238 Center Console **\$84,500**



Just Arrived!

This Beautiful 2016 Pursuit C238 CC has just become available, bought new here in Maine in and lightly used by its Original owner, some of the highlights included

- Single Yamaha 300 4-stroke with 355hrs
- White Hull/ Navy boot stripe white bottom paint
- Dual Axle bunk trailer
- Garmin Electronics GPS/ Depth / VHF
- Live well
- Folding transom seat

BASIC INFORMATION

Manufacturer:	Pursuit	Model:	C 238 Center Console
Year:	2016	Category:	Power
Condition:	Used	Location:	Freeport, US
Hull Material:	Fiberglass		

DIMENSIONS & WEIGHT

Length:	23 ft	Beam:	8.5 ft
Draft - max:	2.67 ft		

ENGINE

Make:	Yamaha	Model:	300 4-stroke
--------------	--------	---------------	--------------

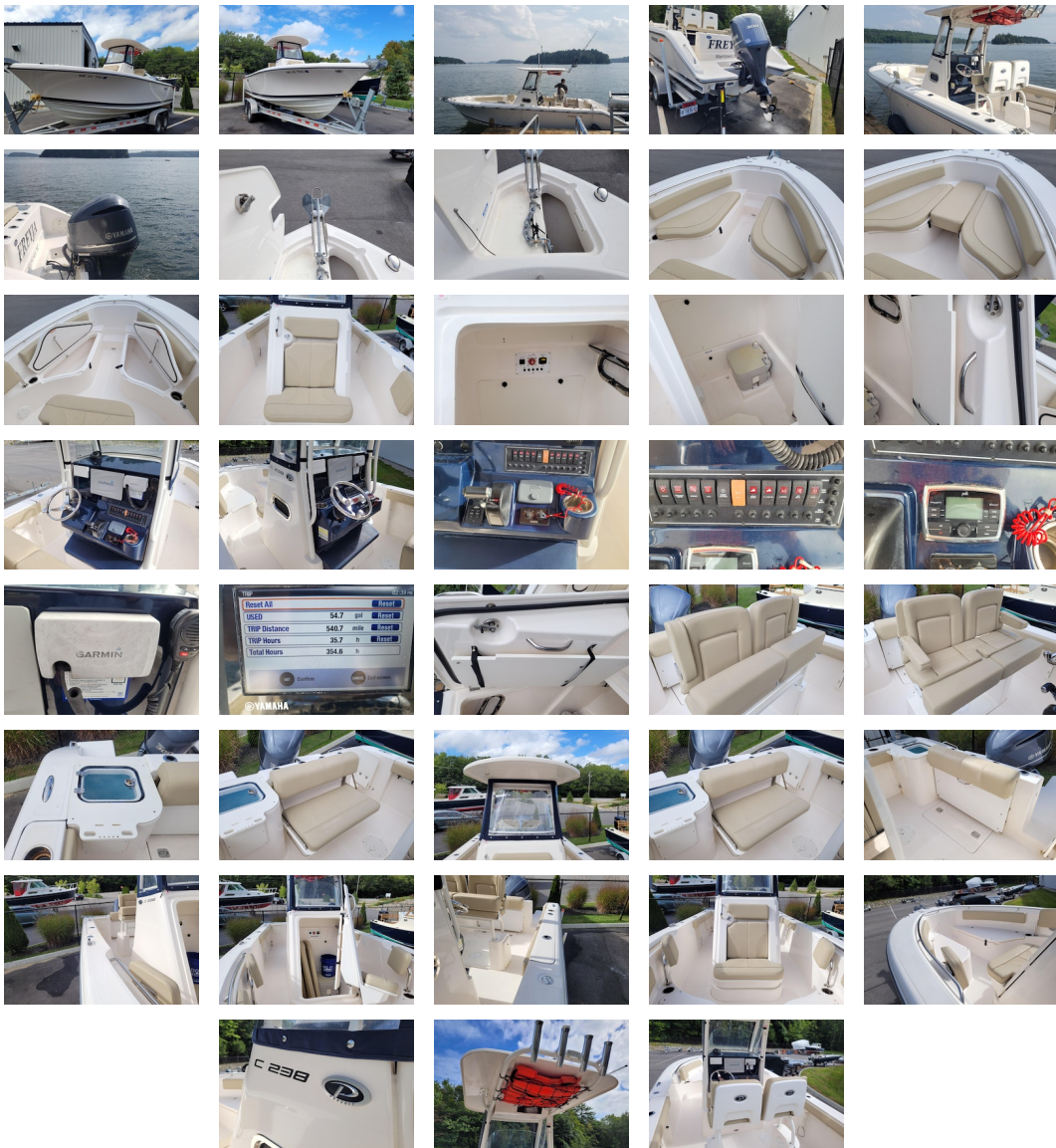
Engine(s): 1 **Hours:** 355
Engine Type: Outboard 4 Stroke **Drive Type:** Direct
Fuel Type: unleaded **Horsepower:** 300 horsepower

TANK CAPACITIES

Fuel Tank: - tank(s) **Fresh Water Tank:** - tank(s)
Holding Tank: - tank(s)

ACCOMODATIONS

Total Heads: 1



Description

- Pursuit® Protection Plan: 5-year hull/deck structural warranty, 5-year blister-free warranty, 2-year limited warranty
- Basic Floatation

- Pursuit Fresh White Gelcoat
- Hand Laminated Hull with Vinyl Ester Resin and Engineered Fabrics
- Infused Fiberglass Structural Grid System with Molded Finish and Integrated Bilge Water Management System
- 5 Ply Resin Infused Composite Transom System
- Integrated Transom Platform Extensions Outboard of Engines
- Trim Tabs with Indicator Lights and Auto-Retract
- Self-Draining Rope & Anchor Locker
- Bronze Thru Hull Fittings Below Water Line
- Chrome over Bronze Thru Hull Fittings Below 7 Degree Heel Line
- Stainless Clad Composite Thru Hull Fittings Above the 7 Degree Heel Line
- Bronze Garboard Drain
- 3 Step Telescopic Boarding Ladder Mounted in Hull Platform
- Electric Oval Horn with SS Cover
- High Density PVC Rubrail with Solid 316L SS Insert, Molded Rubrail Corners and 316L SS Transom Cap
- 1/2" 316L SS Bow Eye
- 1/2" 316L SS Stern Eyes (2)
- Molded One Piece Deck and Cockpit Liner with Non-Skid Pattern Area and Overboard Drains
- Hull and Deck Joint Mechanically Fastened
- 8" 316L SS Pop Up Cleats (2) Stern, (2) Mid-Ship and (2) on Bow
- Molded Recessed Hatches with Gaskets and 316L SS Latches and Overboard Drain Tracks
- Flush Mounted Integral Anchor Locker with Fiberglass Lid
- One-Piece Welded 316L SS Recessed Grab Rail in Bow
- Four (4) 316L SS Rod Holders in Gunwales
- Under Gunwale Rod Storage, Port and Starboard
- Molded Transom Walkthrough and Hinged HDPE Transom Door with 316L SS Latch and Positive Catch
- Port and Starboard 316L SS Transom Grab Rails
- Custom Cockpit Upholstery with Dri-Fast Foam and Mesh Backing
- FRP Leaning Post / Powder Coated Frame with Dedicated Cooler Space
- Lighted Oceana Blue 23 Gallon Recirculating Live Well
- Folding Stern Seat
- 316 L SS Cockpit Drink Holders (2) Bow , and (2) in Gunwales
- Bow Seating Port and Starboard with Fiberglass Hatches and Storage Below
- Raw Water Outlet in Cockpit with Quick Connect Fittings and 25' Hose
- LED Cockpit Accent Lights (4)
- Port and Starboard 2 mile LED Navigation Lights
- 316L SS Deck Plates for Water and Waste
- Anchor Roller Chute / 8" Cleat with Chain Binder 14lb Delta Style Anchor, 150' of 1/2", 8 Plait Rode

Console

- **Molded Console with Integrated Footrest and Forward Facing Seat**
- **Hydraulic Steering Pump**
- **13.5" 316L SS Steering Wheel**
- **12V Switch Panel**
- **316 L SS Helm Drink Holders (2)**
- **Compass**
- **Trim Tab Control Panel and Indicator**
- **316 L SS Grab Rail**
- **One 12V Outlet (1) and Dual USB Charger (1)**
- **Helm Fire Extinguisher**
- **Tempered Glass Windscreen with Powder Coated Frame**

T-top

- **Molded Fiberglass Hardtop**
- **Overhead Glove Box**
- **Powder Coated Structural Hardtop Support**
- **4 Rod Holders**
- **Combination Anchor / Stern LED All-around Navigation light.**
- **Two (2) Tri Color LED Lights**
- **Aft Facing LED Spreader Light**

Electrical

- **UL® Rated Fully Tinned, Color Coded Copper Wire**
- **Custom Built, Heat Sealed, Mechanically Crimped, Color Coded Battery Cables**
- **Custom Built, One Piece Electrical Harness with Water Proof Connectors and Chafe Protection**
- **Powder Coated, Aluminum, Screen Printed (Front & Back) Battery Switch and Breaker Panel**
- **Two Battery System: Engine (1) and House (1)**
- **One Grounding Bus Bar**
- **Electronics Fuse Block**

information nor warrant the condition of the vessel. A buyer should instruct his agents, or his surveyors, to investigate such details as the buyer desires validated. This vessel is offered subject to prior sale, price change, or withdrawal without notice.

PRESENTED BY

JIM MCAULIFFE

CELL 207-252-2737

OFFICE 207-865-0432 x300

jim@dimillos.com

