

2011 Back Cove 37 Hardtop Express **\$419,000**



2011 Back Cove 37 - A great example of a nicely equipped and very clean pre-owned Back Cove 37. Powered with the upgraded Cummins 600hp QSC8.3L engine, equipped with bow and stern thrusters, Garmin 7215 chart plotter, Simard autopilot, 9kW Onan generator, air conditioning w/ heat, 1800W ProSine inverter, windlass, Flag Blue hull color, Ultrasuede fabrics in main salon, Sunbrella fabrics in cockpit, Stamoid cockpit covers, SunSure windshield cover, and more.

For complete details, ownership history and/or showings, please contact the Listing Broker below.

BASIC INFORMATION

Manufacturer:	Back Cove	Model:	37 Hardtop Express
Year:	2011	Category:	Power
Condition:	Used	Location:	Portland, US
Vessel Name:	Back Cove 37	Hull Material:	Fiberglass
Designer:	Back Cove Yachts Design Team		

DIMENSIONS & WEIGHT

Length:	37 ft	Beam:	13 ft
Draft - max:	3.25 ft		

ENGINE

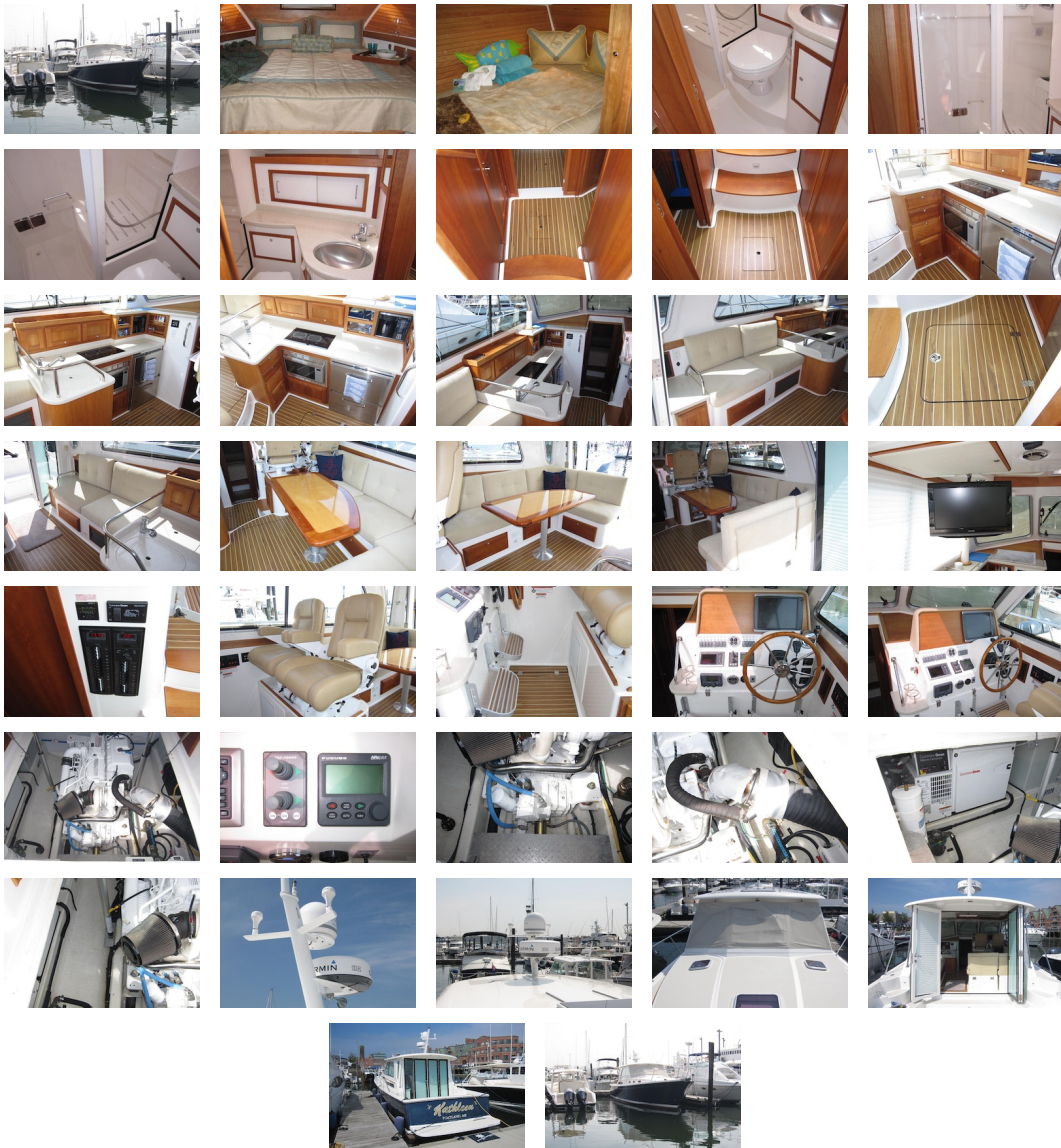
Make:	Cummins	Model:	QSC 8.3L 600hp
Engine(s):	1	Hours:	142

Cruise Speed:	26 kn	Engine Type:	Inboard
Drive Type:	Direct	Fuel Type:	diesel
Horsepower:	600 horsepower	Max Speed:	29 kn

TANK CAPACITIES

Fuel Tank:	285 gallon - 1 tank(s)	Fresh Water Tank:	150 gallon - 1 tank(s)
Holding Tank:	50 gallon - 1 tank(s)		

ACCOMODATIONS



Accommodations

- Salon Seating Area
- L-Settee with Hi/Low table converts to double berth
- Double settee opposite with molded end table
- Flip-down LCD TV w/ DVD
- Large engine room hatch opens by electro-hydraulic actuator
- Premium flooring material
- Molded headliner with padded panel inserts

- XM friendly stereo system w/ CD & interior/cockpit speakers w/ wired remote
- Master Stateroom
- Cherry interior on molded composite hull liner
- High pressure laminate "teak-n-holly" cabin sole
- Molded headliner with padded panel inserts
- Island queen centerline berth forward with drawers & storage below
- Shelves outboard with cherry fiddles
- Cherry hull ceiling
- Cedar lined hanging locker with shelf
- Reading lights
- Multi drawer dresser with dovetailed drawers
- LED overhead lighting
- Guest Stateroom
- Molded headliner with padded panel inserts
- Wide double berth with drawers under
- Night stand with storage
- Outboard storage shelves over berth
- Cherry headboard with reading lights
- Cherry hull ceiling

Galley/Head

- **Galley**
- Surface mount cook-top
- AC/DC drawer-type fridge/fridge compartment in lieu of standard
- Galley sink with single lever faucet & drop in cover
- Solid surface countertop
- Under-counter convection microwave
- Drawers and doors below counter
- Molded lighting soffit over countertop
- Premium flooring material
- **Head**
- Oversized head with separate shower stall
- Built-in vanity with sink
- Solid surface countertop
- Full length mirror on door
- Single lever faucet and soap dispenser
- Shower drain sump pump system
- Molded seat in shower stall with storage beneath and locker outboard
- Fresh water electric MSD with holding tank
- Waste tank monitor
- Macerator for overboard discharge
- Stainless steel opening port with screen
- 12V Vent Fan

Navigational Electronics

- Garmin 7212 chartplotter/radar color touch screens
- Garmin 4kW HD 24NM radar
- Digital sounder module for depth
- 600W bronze thru-hull transducer
- ICOM M504 VHF radio
- 3' SS VHF antenna whip
- Furuno Auto-Pilot

Electrical

- Electrical Systems
- AC and DC control panels with polarity indicator
- DC system battery management switching
- DC breakers for electronics
- 110V AC 30 amp shore power with 50 foot cord set
- Emergency parallel switch
- Galvanic isolator
- Battery Charger, 50 amp
- (2) 4D AGM house battery
- (3) Group 31 engine start battery
- (3) 12VDC automatic bilge pumps
- 12V outlet at helm
- Bonding system with zinc anode
- Cockpit courtesy lights
- GFI protected 110V circuits
- (3) windshield wipers with washer system
- Compass, illuminated
- Running lights

Hull/Deck

- Hull
- Vacuum infused FRP construction
- Advanced prop pocket hull design
- Back Cove white iso-npg gelcoat
- Vinylester backup resin
- Vacuum bagged PVC core hull design
- Multiaxial E glass reinforcement
- Awlgrip boot top
- Molded cove stripe depression with "gold leaf" style stripe
- Deck
- Vacuum infused FRP construction
- Port & starboard molded steps leading to side & fore deck
- Teak accent stripe
- Back Cove white iso-npg gelcoat w/ graystone anti-skid on walking surfaces
- Multiaxial E glass reinforcement
- Lewmar hatch with screen in main cabin
- Lewmar hatch with screen over island berth
- Lewmar hatch with screen over head compartment
- Lewmar hatch with screen over guest stateroom
- Lewmar pilot hatches with screens/shades in hardtop
- (6) opening Port lights with screens
- Clear anodized aluminum windshield with center opening
- Trumpet horn on hardtop
- Anchor locker
- Molded Composite bow sprit w/ stainless steel anchor roller and windlass
- Mooring cleats w/ skene chocks forward, aft & spring line cleats
- Pop-up cleats at transom corners
- Custom 1 1/4" 316L stainless steel bow rail
- (2) Stidd 1200 series helm seats
- Swim platform and swim ladder
- Hot and cold cockpit shower
- Self bailing cockpit
- Transom Door
- Seat in cockpit with storage below

Mechanical

- **Mechanical Systems**
- Cummins QSC 8.3L 600 hp electronic engine and marine gear
- Electronic single lever engine control
- Digital engine control panel with alarms and hour meter
- Internal sea strainer
- Fuel Filter
- (3) Engine room lights
- 2" Aquamet shaft
- 4 Blade NiBrAl propeller
- Dripless shaft log
- Electric trim tabs with indicators
- 6" Exhaust with two stage horizontal muffler
- Teleflex hydraulic steering with tilt helm pump
- Stazo teak steering wheel
- Hot and Cold pressurized water (110V and engine heated)
- 11 gallon hot water heater with heat exchanger
- Bow thruster with joy stick control
- Stern thruster with joy stick control
- Marelon sea valves on underwater thru hulls
- Fireboy extinguisher system & carbon monoxide detector
- Macerator with overboard discharge
- 9.0 kw gen set Onan
- Reverse cycle heat and air in three zones

Additional Equipment

- Engine Cummins QSC 8.3 @ 600 hp engine w/ BTS control (145 hrs)
- Hull Color - Flag Blue
- Main Salon Seating Ultralsuede
- Stidd Helm Seats Ultraleather Buckskin
- Cockpit Seat Cushions Sunbrella Cruiser Nautical
- Ocean Air Blinds (4) bi-fold aft doors, side windows in main salon
- Bow Thruster
- Ignition Protected Stern Thruster
- Oil Changing System
- 1800 Watt Inverter
- Mast for Hardtop
- Master Flat Screen TV / DVD Player

- SunSure 90% windshield cover
- Stamoid cockpit seat covers

DisclaimerThe Company offers the details of this vessel in good faith but cannot guarantee or warrant the accuracy of this information nor warrant the condition of the vessel. A buyer should instruct his agents, or his surveyors, to investigate such details as the buyer desires validated. This vessel is offered subject to prior sale, price change, or withdrawal without notice.

PRESENTED BY

SCOTT MACLEAN

CELL 207-318-0627

OFFICE 207-773-7632 x289

scott@dimillos.com

