

2009 Chaparral 275 SSi \$51,000



New to Market

BASIC INFORMATION

Manufacturer:	Chaparral	Model:	275 SSi
Year:	2009	Category:	Power
Condition:	Used	Location:	Glen Cove, US
Hull Material:	Fiberglass		

DIMENSIONS & WEIGHT

Length:	28.83 ft	Beam:	9 ft
Draft - max:	2.92 ft	Dry Weight:	7,300 lb

ENGINE

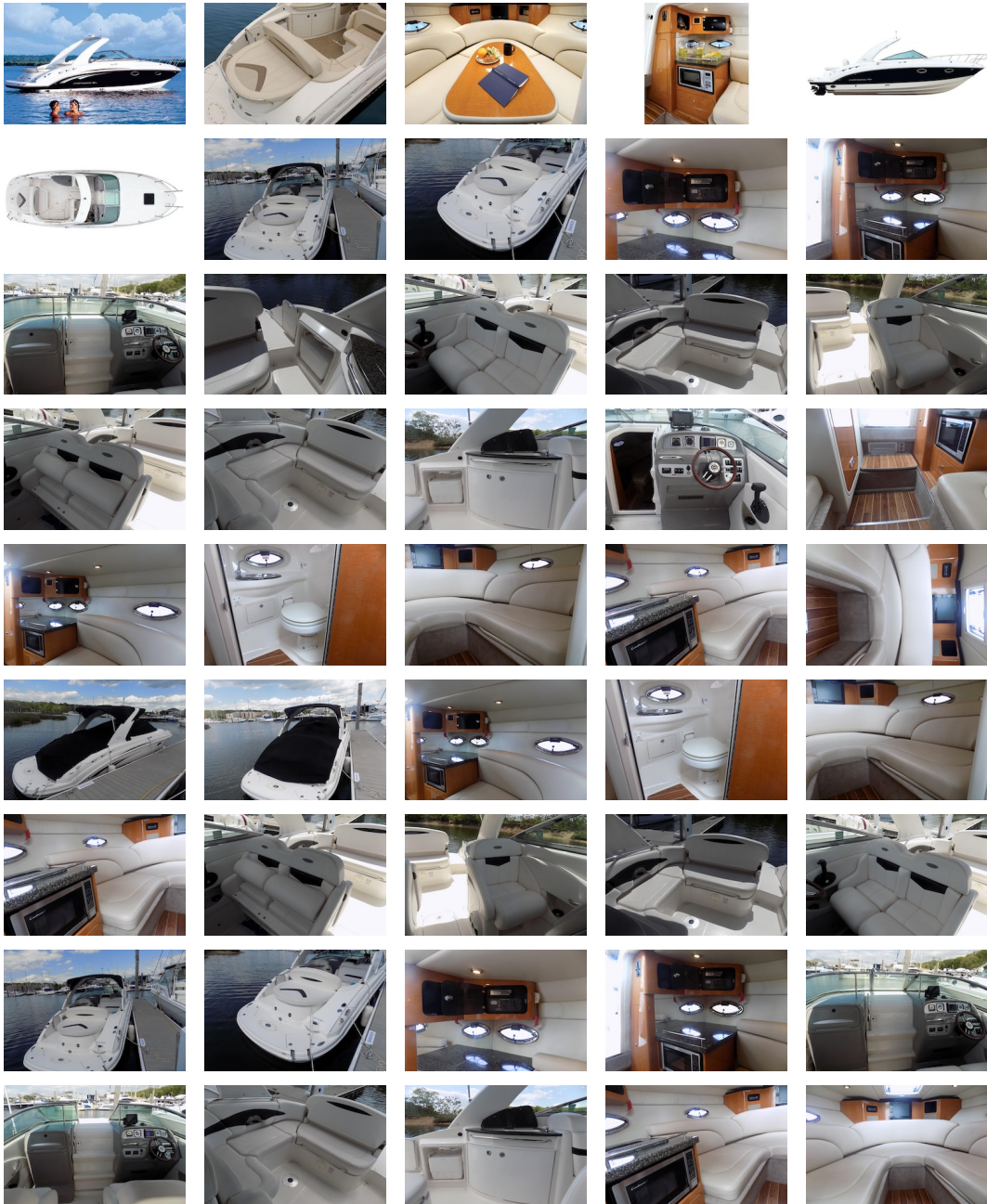
Make:	MerCruiser	Model:	Merc 8.1 196 MAG SEACORE 375 HP
Engine(s):	1	Hours:	435
Engine Type:	Inboard	Drive Type:	Stern
Fuel Type:	unleaded	Horsepower:	375 horsepower

TANK CAPACITIES

Fuel Tank: 105 gallon - 1 tank(s) **Fresh Water Tank:** 14 gallon - 1 tank(s)
Holding Tank: - tank(s)

ACCOMODATIONS

Total Berths: 2 **Total Heads:** 1



Manufacturer Provided Description

Part performance boat, part family day cruiser and all Chaparral, our 275 SSI can best be described in three words: Exceptional. Exciting. Extraordinary. A dual wide helm bolster includes individual flip up bases. Sporting 5'3" of welcome cabin headroom, the 275 is more elegantly detailed than most cuddys in this size range. A stainless steel capped walk-thru windshield highlights a premium hardware package. Fore and aft ladders solve all boarding problems and the transom walk-thru allows easy passage. Key options include a 5,000 BTU air conditioning system, transom shower, elevated forward bow rail and 40 ounce snap-in carpet with action backing. U-shaped cockpit seating is enhanced by a dinette table with built-in drink holders. Aft, a reversible back seat angles to create a chaise lounge or folds flat to form a sun lounge. Storage is available underneath.

Engine Notes

Max hp displayed as standard.

Optional Factory Equipment

Premium Package

Convenience Package

Speaker upgrade Radio

VHT Vacuflush System with Macerator

Overnight Package

Head Cabinet with Sink and Solid Surface Countertops

Stainless Steel Cockpit Refrigerator

Stainless Steel Transom Shower

Mahogany Steering Wheel

Teak and Holly Floor in floor in Head

Trim Tabs

Trim Tabs Indicator Lights

Radar Arch

Cabin Table

Air Conditioning

DisclaimerThe Company offers the details of this vessel in good faith but cannot guarantee or warrant the accuracy of this information nor warrant the condition of the vessel. A buyer should instruct his agents, or his surveyors, to investigate such details as the buyer desires validated. This vessel is offered subject to prior sale, price change, or withdrawal without notice.

PRESENTED BY

DAVE TISCHER

CELL 516-668-1055

OFFICE 516-623-6256 x403

dave@dimillos.com

