

## 2018 Monte Carlo Yachts MCY 65 **\$2,959,000**



Available for a personal VIP Showing

This is the only Monte Carlo Yachts 65 Available for Immediate Delivery in US Waters

Genuinely Italian in its management, designers and artisanal skills Monte Carlo Yachts is the fastest growing Italian brand in the luxury motor yacht segment, supported by the industrial strengths of French Group Beneteau. It has developed and launched a range of award winning models that have been recognised internationally both for their iconic style and their performance.

Since their first appearance in the American market five years ago, the yachts of the MCY collection have made a strong impact across the region. The incredibly spacious interiors, the original and noble design and unprecedented levels of customization attracted much attention and positive feedback from those attending the most important American Boat Shows.

Designed by world-renowned Superyacht Designer, Nuvolari Lenard, the 65' MCY features best in-class flybridge, master cabin and ensuite, and a 3 cabin design that is not easily duplicated. Monte Carlo Yachts provides a customized experience to ensure the needs of all their clients are being met.

Monte Carlo Yachts is an important addition to DiMillo's Yacht Sales portfolio of luxury motor yachts, at a time when demand for bespoke luxury motor yachts is increasing in the United States.

### BASIC INFORMATION

<b>Manufacturer:</b>	Monte Carlo Yachts	<b>Model:</b>	MCY 65
<b>Year:</b>	2018	<b>Category:</b>	Power
<b>Condition:</b>	New	<b>Location:</b>	Ft. Lauderdale, US
<b>Vessel Name:</b>	MCY 65	<b>Hull Material:</b>	Fiberglass

### DIMENSIONS & WEIGHT

**Length:** 65 ft **Beam:** 17.08 ft  
**Draft - max:** 5.08 ft

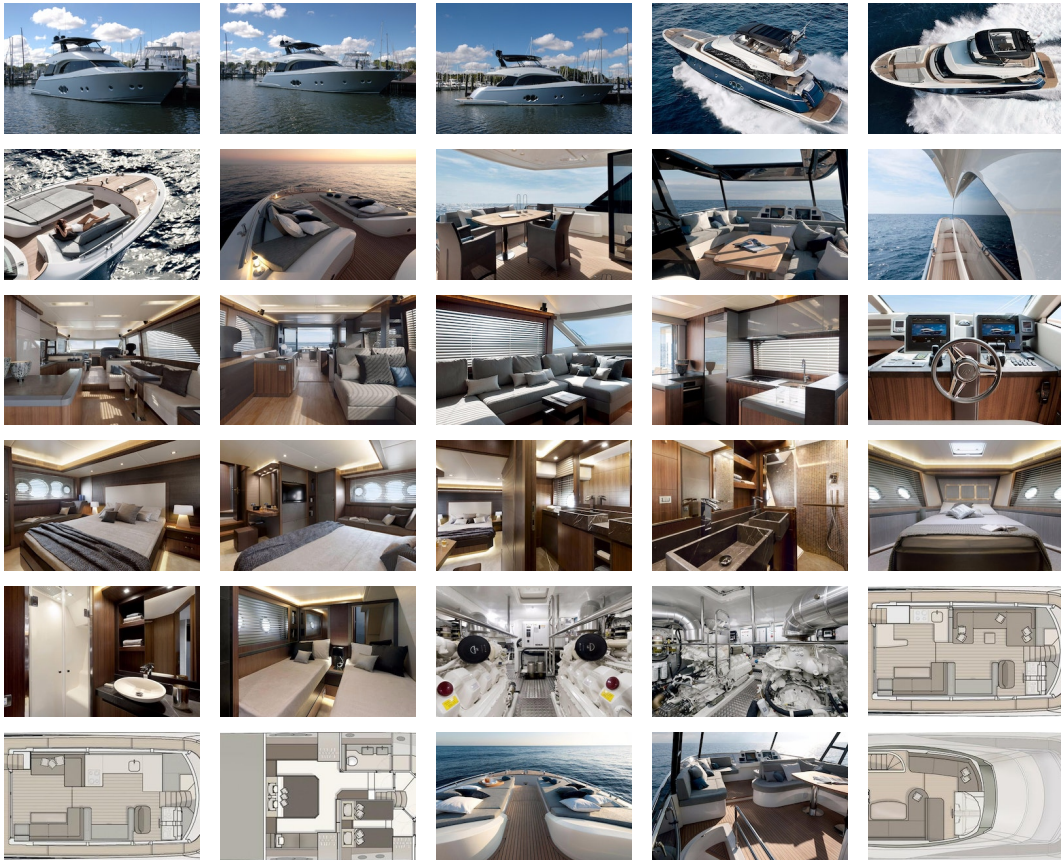
### ENGINE

**Make:** Man **Model:** V8 1200  
**Engine(s):** 2 **Cruise Speed:** 26 kn  
**Engine Type:** Inboard **Drive Type:** Direct  
**Fuel Type:** diesel **Horsepower:** 1000 horsepower  
**Max Speed:** 30 kn

### TANK CAPACITIES

**Fuel Tank:** 925 gallon - 1 tank(s) **Fresh Water Tank:** 198 gallon - 1 tank(s)  
**Holding Tank:** 66 gallon - 1 tank(s)

### ACCOMODATIONS



#### Hull Design and Characteristics

- MCY 65 has a planing hull, with a 15° deadrise angle along the entire bottom, deep “V” bow, with 6 iso-parametric spray rails.
- Hull, deck and superstructure are made in sandwich lamination using only vinylester resin in the external skin to prevent osmosis phenomena and DCPD resin.
- A bow crash box to improve the resistance to waves and impacts is provided. Furthermore, in that same area, the hull is

- reinforced by using kevlar lamination.
- Structural bulkheads are in sandwich.
- The other internal partition walls are built using LARICROSS composite
- The structural project of the hull is according to CE-Design Category A

### **Power and Drive Systems**

- Engines
  - (2) MAN V8 1200, 8 cylinders, 90° V design
- Gearbox
  - ZF 510 - 1 A
  - Direct mount marine transmission
- Shafts
  - Aquamet 22, diam. 80 mm
- Propellers
  - NiBrAl alloy, four blades, 880 mm diameter
- Rudders and Steering System
  - Steel, 0.25 sqm surface
  - Power assisted steering system
- Dual Station Bow Thruster
  - 24V 10kW (210kgf)
  - Manoeuvring system option:
    - Manoeuvring joysticks (main helm and flybridge) for easy control at docking, with electronic control of bow thruster and engines (and stern thruster when option is installed)
  - Flaps:
    - Hydraulic Trim Tabs System
  - Option1 :
    - Humphree ATOS
  - Option2:
    - Humphree ATOS +BTOS+CTOS

### **Mooring**

- 40 kg anchor with 70 m chain
- Reversible electric anchor winch, with foredeck, main helm and flybridge controls (controls on floor for up/down/captain operation)
- Stern head roller with automatic anchor launch and retrieve
- Bow stainless steel protection
- Stainless steel bow fairleads with stainless steel protection
- Stainless steel bow, stern and 6 spring cleats ( and additional 2 as option)
- Option: twin stern mooring electric winches
- Stern stainless steel fairleads with rollers

### **External Layout and Equipment**

- **Flybridge**
  - External staircase with teak steps
  - Option: teak floor
  - Lights and perimeter courtesy lights
  - Plexiglass and aluminium access hatch to flybridge
  - Plexiglass and stainless steel windscreen
  - Stainless steel protection pulpit and handrails
  - Fiberglass radar mast, black painted, with aluminium wings supporting:
    - navigation lights,
    - radar and GPS antennas equipment,
    - TV antenna,
    - horn
    - lighting protection
    - flybridge lights
  - Pilot console with navigation and engine control screens, including instrumentation as per section 9, plus:
    - steering wheel
    - main engines and reversing gear levers
    - key switches for port and starboard engines
    - rudder angle indicator
    - horn, windscreen wipers, rudder pump, anchor winch and chain counter, search light
    - panel with warning and alarms for monitoring system

- Helm Seat with storage
- C-shape sofa with cushions, decorative cushions and large capacity storages
- "L" sofa on port side, with cushions
- Teak table for 6 people with 2 stainless steel legs.
- Sunbathing aft platform
- Galley with sink, hot and cold water supply, fridge, ice maker and storages
- Barbecue grill (option)
- **Stern**
  - Bathing platform with:
    - hydraulic up/down lifting system – 600 kg max loading capacity
    - platform size suitable for a 3.25 m tender length
    - platform teak floor and teak grating
    - stainless steel fender bar with rubber insert reinforcement
  - Foldable bathing ladder
  - Water proof access hatch to engine room, and crew cabin
  - Stern stairs to aft cockpit, with stainless steel handrails and hatches for shore power connection and stern platform shower (cold and hot supply)
  - Option: electro-hydraulic concealed stainless steel gangway, with teak grating, automatic stanchions.
- **Aft Cockpit**
  - Option: teak handrails on bulwark with stainless steel handrails
  - Teak floor with perimeter courtesy lights
  - Stainless steel and tempered glass fashion plates for lateral protection of the cockpit, with courtesy lights
  - Salon door in stainless steel and tempered glass
  - Stainless steel and plexiglass gates to stern staircases
  - Stern sofa with cushions and storage
  - Teak table for 8 people with two stainless steel legs
  - LED power and courtesy lights on ceiling
  - Flush deck hatch for engine room
- **Sideways**
  - Option: teak floor with perimeter courtesy lights
  - Storages covered with teak door and step, containing fresh water intake (on port side) and black and grey waste discharges (on starboard side)
  - Option: teak handrails on bulwark with stainless steel handrails
  - Stainless steel fender rubber with rubber insert reinforcement
  - LED power lights on ceilings
  - Tempered high thickness glass windows glued to the superstructure
  - Window on starboard side (manual)
  - Option: semi-automatic electric watertight door from saloon to starboard sideways, in lieu of manual window
- **Bow cockpit**
  - Chain locker in the anchor winch area, with:
    - two storages and handrails to fix fenders
    - chain guiding support
    - cold and hot water shower
  - Teak floor with perimeter courtesy lights
  - Flush deck hatch for VIP cabin emergency exit
  - Sofas with cushions and storages
  - Complete Portuguese bridge with storages
  - Stainless steel handrails
  - Option: teak handrails on bulwark along the Portuguese bridge
  - Forward windscreen in sandwich tempered glass
  - 2 electric windscreen wipers for forward windscreen

## Internal Layout and Equipment

### 1. Internal Layout and Equipment

- **Main deck – saloon**
  - Cabinet with drawers on starboard side on starboard side.
  - Electric panels along stairs to lower deck
  - Dishware and cutlery storage
  - Sofa on port side with sofa table
  - Sofa on starboard side with foldable dining table
  - Option: TV with up/down rotating lifting mechanism for a 40" LED full HD TV
  - Direct LED lights on ceilings, indirect lights on ceiling
  - Venetians blinds on port and starboard sides
  - Electrical panel on starboard side
  - Stairs to lower deck
  - Galley on portside
  - Electric venetian blinds (option)
- **Wheelhouse**
  - Instruments console
  - Option: semi-automatic electric watertight door to access sideways

- Helm seats (for 2)
  - Direct LED lights on ceilings (day and night navigation lights)
  - Pilot station includes, further to the instrumentation as per paragraph.9:
  - Steering wheel in leather
  - Main engines and reversing gear levers
  - key switches for port and starboard engines
  - Rudder angle indicator
  - Horn, windscreen wipers, rudder pump, anchor winch and chain counter, search light, fire extinguisher controls
- **Galley**
    - Working top with cooking top and stainless steel sink
      - Storage under cooking top and sink
      - Storage shelves
      - Direct LED lights on ceilings
    - Equipment of galley includes:
      - four induction hobs
      - extractor
      - combined oven
      - fridge + freezer 190 liters total capacity
      - option: dishwasher
      - hanging furniture and cabinets
      - option: front opening freezer + 260 liters fridge
  - **Crew Cabin**
    - Two beds with mattresses, bedspreads and pillows
    - Wardrobe
    - Direct LED lights on ceilings
    - Opening porthole with mosquito net
    - Storage underneath the bed
    - Weather tight door to engine room
    - Sink
    - Mirror
    - Cabinet
  - **Crew Bathroom**
    - Tecma WC
    - Direct LED spotlights on ceiling
    - Shower
  - **Master Cabin**
    - King size bed with mattress, bedspread and pillows
    - Two nightstands
    - Power LED indirect light and LED spotlights
    - MCY design large windows with opening portholes and mosquito nets
    - Chaise longue with cushions
    - Venetians blinds on port and starboard sides
    - 2 wardrobes with hanging bars
    - Large storage and drawers on portside
    - Vanity table with pouf- Carpet
  - **En-suite bathroom**
    - Tecma WC
    - Option: Tecma bidet
    - Marble with two large size basins and floor
    - Venetian blinds
    - Mirror and cabinet
    - Power LED indirect light and LED spotlights
    - Separate shower room with:
      - Mosaic tiles
      - Shower column with central rain shower on the ceiling
      - LED lights on ceiling and in the shower
    - Extractor
  - **Guest Cabin**
    - Twin beds with mattress, bedspreads, pillows and storage underneath
    - One nightstand
    - Two opening portholes with mosquito nets
    - Power LED indirect light and LED spotlights
    - Wardrobe with hanging bar, mirror and light
    - Venetian blinds
    - Carpet
- **Guest Bathroom**
    - The guest head can be used as a day toilet with direct access also from the lower deck corridor
    - Tecma WC
    - Sink
    - Mirror
    - Cabinet under the sink and behind

- Shower with circular box
- Opening porthole with mosquito net
- LED spotlights on ceiling and in the shower
- **VIP Cabin**
  - Double bed with mattress, bedspread, pillows and storage underneath
  - Two nightstands
  - Wall reading lamps in leather
  - Power LED indirect light and LED spotlights
  - Four opening portholes with mosquito nets
  - Wardrobes with hanging bar and light
  - Emergency hatch on ceiling, with mosquito net
  - Venetian blinds
  - Carpet
- **VIP Bathroom**
  - Tecma WC
  - Sink
  - Mirror
  - Cabinet above and under the sink
  - Shower with glass and steel door
  - Shower column with central rain shower
  - Opening porthole with mosquito net
  - LED spotlights on ceiling and in the shower
  - Power LED indirect light

## Electrical Systems

- **General characteristics.** The whole system has been carried out according to:
  - 1) Directive 94/25/CE, amended by 2003/44/CE
  - 2) EN ISO 10133:2000 “Small craft – Electrical systems – Extra-low-voltage D.C. Installations”
  - 3) EN ISO 13297:2000 “Small craft – Electrical systems – Alternating current Installation”
  - 4) EN ISO 10134:2003 “Small craft – Electrical devices – Lightning protection systems”
  - 5) EN ISO 16147:2002 “Small craft – Inboard diesel engines – Engine-mounted fuel and electrical components”
- **Voltage system as follows:**
  - 24V DC with grounded negative for:
    - Bilge systems
    - Steering systems
    - Internal / External lights
    - Engine room lights
    - Navigation lights
    - Electronic monitoring system
    - Navigation systems
    - Emergency systems
    - Thrusters & Winches
    - Engine room ventilation
    - Other small utilities
  - 230/110V AC, single phase, 60Hz for:
    - Air conditioning systems (option)
    - Galley appliances
    - Battery chargers
    - Electrical outlets
    - Entertainment systems
    - Other small utilities
  - **Electrical panels**
    - Main electrical control panels are installed in the:
      - engine room
      - wheelhouse
    - Secondary electrical panels are installed in all the areas of the yacht
  - **Wiring / Conduits**
    - Electrical wiring is housed in metal or self-extinguishing closed PVC conduits.
    - Electrical wiring is developed with no flammable materials and with proper cross section related to the use.
  - **Ground Equipment**
    - Ground system for all the water intakes, the aluminium structure, steel components, etc...
    - Ground system for all the 230/110V AC equipment
    - Lightning protection
    - The ground system is connected to:
      - Stern and under hull zincs
      - Porous copper plates under the hull
    - **230/110V AC Power sources**
      - Shore Power
      - Two 230V AC, 50A shore inlets placed on stairs hatch – with Glendenning master cable systems (option)

- AC power source run to the main electrical panel in the engine room.
- Power sources are protected by magneto/thermal breakers and isolation transformers
- Each shore power line has a multi-meter, to control all the electrical parameters (Volt, Amp, Watt, frequency)
  
- **Generator**
  - One 23 kW Kohler generator, 230/110V AC, 60Hz, 12V DC starter, with sound shield box and electronic control panel located in the engine room.
  - AC power source run to the main electrical panel in the engine room
  - Power sources are protected by magneto/thermal switches
  - Generator has a multi-meter that control all the electrical parameters (Volt, Amp, Watt, frequency)
  - 230/110V AC distribution
  - Each appliance is protected by magneto/thermal breakers
  - 24V DC Power sources
  
- **Batteries**
  - Group of 24V AGM Mastervolt batteries for services
  - Group of 24V AGM Mastervolt batteries for engines
  - Group of 24V AGM Mastervolt batteries for anchor winch and bow thruster
  - 12V AGM Mastervolt battery for generator
  - Group of 24V AGM Mastervolt batteries for stern thruster (option)
  
- **Battery chargers**
  - 24V 100Amp Mastervolt battery charger for services / engine batteries
  - 24V 30Amp Mastervolt battery charger for anchor winch and bow thruster batteries
  - 12V 25Amp Mastervolt battery charger for generator
  - 24V 30Amp Mastervolt battery charger for stern thruster (option)
  
- **Alternators**
  - 24V 120Amp alternator connected to service battery.
  - 24V 120Amp alternator connected to anchor winch and bow thruster battery
  - 2 x 24V 120Amp alternators connected to engine battery

Generator alternator connected to the generator battery

## Lighting System

- **Engine Room**
  - Spotlights 24V DC are installed to the ceiling of the engine room.
  - Engine room lights are connected to service batteries
  
- **Master, VIP and Guests Cabin**
  - Power LED spotlights and strip power LED in the ceiling
  - Courtesy strip LED around the bed and under the furniture
  - Lights control close to the entrance door and near the bed
  
- **Saloon and Galley**
  - Power LED spotlights in the ceiling
  - Blue power LED spotlights in the dashboard ceiling (night navigation lights)
  - Lights control close to the entrance door and near the stairs
  
- **Crew**
  - Power LED spotlights and strip power LED in the ceiling
  - Courtesy LED under the bed
  - Lights control close to the entrance door
  
- **Bathrooms**
  - Power LED spotlights and strip power LED in the ceiling
  - Courtesy LED
  - Lights and shower ventilation control close to the entrance door
  
- **Exteriors**
  - Power LED spotlights and strip power led in the aft cockpit ceiling and in the side deck ceiling
  - Courtesy LED spotlights around the floor of the external deck and the floor of the fly bridge
  - Courtesy Power LED spotlights on the upper side of the fashion plates
  - Power LED spotlights in the radar mast wings
  - Lights control close to the entrance door and in the monitoring system

## Electronics

- **Dashboard & Navigation Instruments** (Due to the continuous updating in the electronics market, the following electronics package may change at any time)
  - Hull
    - N°1 Raymarine DT800 Depth / Temperature transducer
  - Wheelhouse

- 2x monitoring, navigation and engines control 10" displays (std)
- 2x monitoring, navigation and engines control 15" displays (option)
- 2x Raymarine ST70 displays
- 1x Raymarine GPM 400 G Series processor
- 1x Raymarine G Series keyboard
- Raymarine RAY 240E DSC VHF
- Flaps indicators
- Option: manoeuvring joystick
- Magnetic compass
- Flybridge
  - 2x MAN CLC 6.5" displays for engines monitoring (including voltmeter, engine oil temperature, water temperature, engine revs, gearbox oil temperature, etc)
  - 1x Raymarine G120 12" display
  - 1x Raymarine ST70 display
  - 1x Raymarine G Series compact keyboard
  - Raymarine RAY 240E VHF repeater
  - Flaps indicator
  - Option: manoeuvring joystick
  - Magnetic compass
- Radar Mast
  - 1x Raymarine PB200 weather station / GPS antenna
  - 1x Raymarine radar antenna radome 4 KW digital
- Monitoring System
- Salon Dashboard Display
  - 2 x 10" (15" option) touch screen displays with connection to Raymarine GPM processor and engines monitoring
  - External and engine room temperature indicators
  - Alarms and manual controls for bilge system
  - Fresh, Grey and Black water level indicators and alarms with discharge control systems
  - Fuel level indicators and alarms with engines consumption indication, water in Racor filters indicator (option), fuel valve ON/OFF indicator
  - Service battery indicators (Volt, Amp IN/OUT, Charge level)
  - Engine battery switch control and voltage indicator
  - Bow thruster and anchor winch battery switch control and voltage indicator
  - Stern thruster battery switch control and voltage indicator (option)
  - Generator battery switch control, voltage indicator, Start/Stop control, fuel valve ON/OFF indicator, water in Racor filter indicator (option)
  - Engine room ventilation alarms and control
  - 230V AC Source selection page with Volt, Amp, Watt, frequency, phase indicators
  - 230V AC main breaker status indicators
  - 230V AC overload and load shedding system
  - Navigation lights status (ON/OFF) and alarms indicators
  - Owner's manual pages viewer
  - Fly dashboard acoustic alarm activation
  - Fly dashboard optical alarm activation
  - Fly dashboard indicators
  - Acoustic remote alarm
  - Optical remote alarm
  - Emergency operation panel (included into 24V saloon panel)
  - Bilge pump alarm indicator and manual switch
  - VHF power supply selection

## **Entertainment Systems**

- Salon
  - Option: 40" Edge LED full HD TV with up/down lift
  - Option: Home Theatre Bose Lifestyle V-Class
  - Option: DVD player
- Owner Cabin
  - Option: 32" Edge LED full HD TV
  - Option: Home Theatre Bose Lifestyle V-Class
  - Option: DVD player
- VIP Cabin
  - Option: 26" Edge LED full HD TV
  - Option: DVD player
- Guest Cabin
  - Option: 20" Edge LED full HD TV
  - Option: DVD player
- Aft Cockpit
- Standard: Two External Loudspeakers (with remote control)
- Option: Two Bose External Loudspeakers (with remote control)
- Aft Cockpit
- Bow Sun pad Area



- Radio CD player (with remote control)
- Four External Loudspeakers
- Fly bridge
- Radio CD player (with remote control)
- Two External Loudspeakers

### **Fuel System**

- 2x stainless steel tanks, for a total capacity of 925 US gals (3.500 l).
- Each tank is provided with stainless steel breather pipe and electric sensor for level monitoring.
- Fuel tank levels are visible on the electronic monitoring system LCD screens at the wheelhouse dashboard operating with a safety magnetic system.
- Fuel filling operation is carried out through inlets placed on each deck side.

### **Black and Grey Water System**

- 1x grey water tank with 80 US gals (300 l) capacity.
- 1x black water tank with 66 US gals (250 l) capacity.
- Grey and black water tank levels are visible on the electronic management system LCD screens at the wheelhouse dashboard.
- Tank's emptying has automatic or manual outboard through 2 dedicated electric pumps.

### **Bilge System**

- Centralized system with suction in each compartment connected to the main collector positioned in the engine room
- 24 V DC electric pump with controller in main helm on the electronic monitoring system
- Emergency manual pump in the engine room.
- 24V automatic bilge pumps.
- High capacity emergency bilge pump in engine room through engine sea intakes and water pump.
- Bilge level alarm.

### **Fresh Water System**

- Fresh water system is fed by tanks in the midship bilge (capacity 200 US gals - 750 l) or by the shore connection on stern.
- Water tank levels are visible on the electronic monitoring system LCD screens at the wheelhouse dashboard.
- 2x 16 US gals (60 l) water heaters

### **Sea Water System**

- 4x main brass sea water intakes with valves and filters: 2 for the engines, 1 for the generator and 1 for general utility.
- Chain washing with sea water supplied by an electric pump positioned under the floor of VIP cabin

### **Venting and Extraction System**

- Interiors ventilation
- Centralized system for toilet air extractors
- Galley extractor
- Engine Room ventilation
- Engine room ventilation system:
  - 2x electrical ventilators 24V DC
  - 2x electrical extractor 24V DC
- Engine room ventilation system control is connected to the engine keys and to the electronic monitoring system.
- Cruisair air conditioning system with reverse cycle (cool and heat) (option)

### **Insulation**

- Hull and deck sandwich lamination together with absorbent, sound-proofing and heat insulation materials guarantee high level of noise reduction and thermal insulation.
- Interiors ceilings and floorings are soft mounted through vibration absorbers materials and system in order to maximize vibrations and noise reduction.
- Complete noise and thermal insulation of engine room through insulation materials, covered with aluminium sandwich finishing walls.

### **Additional Equipment**

- mooring ropes
- 6 fenders
- Dishware, glassware and cutlery for 6 people
- Towel sets for bathrooms, with MCY logo
- Owner's manual (with electronic copy available through the electronic monitoring system)

**Disclaimer** The Company offers the details of this vessel in good faith but cannot guarantee or warrant the accuracy of this information nor warrant the condition of the vessel. A buyer should instruct his agents, or his surveyors, to investigate such details as the buyer desires validated. This vessel is offered subject to prior sale, price change, or withdrawal without notice.

