

2006 Cobalt 282 \$45,000



New price, gimbal bearing, bellows, Impellor & bottom paint

This one-owner Cobalt 282 was just traded to us. Originally from Chesapeake Bay, the boat was just shipped up to us in Maine and is ready for the Summer. Easy to handle, she has a single Volvo Penta 8.1 L motor, seating for 10, a nice garmin GPS, and a good size head. If you're looking for a turn key opportunity, then don't miss out on this well found luxury bow rider.

BASIC INFORMATION

Manufacturer:	Cobalt	Model:	282
Year:	2006	Category:	Power
Condition:	Used	Location:	Freeport, US
Vessel Name:	Our Trade	Hull Material:	Fiberglass

DIMENSIONS & WEIGHT

Length:	28 ft	Beam:	9 ft
Draft - max:	2.58 ft	Bridge Clearance:	5.58 ft
Dry Weight:	6,670 lb		

ENGINE

Make:	Volvo Penta	Model:	8.1 L
Engine(s):	1	Hours:	189
Engine Type:	Inboard/Outboard	Drive Type:	Stern

Fuel Type:

unleaded **Horsepower:**

380 horsepower

TANK CAPACITIES

Fuel Tank:

90 gallon - 1 tank(s)

Fresh Water Tank:

18 gallon - 1 tank(s)

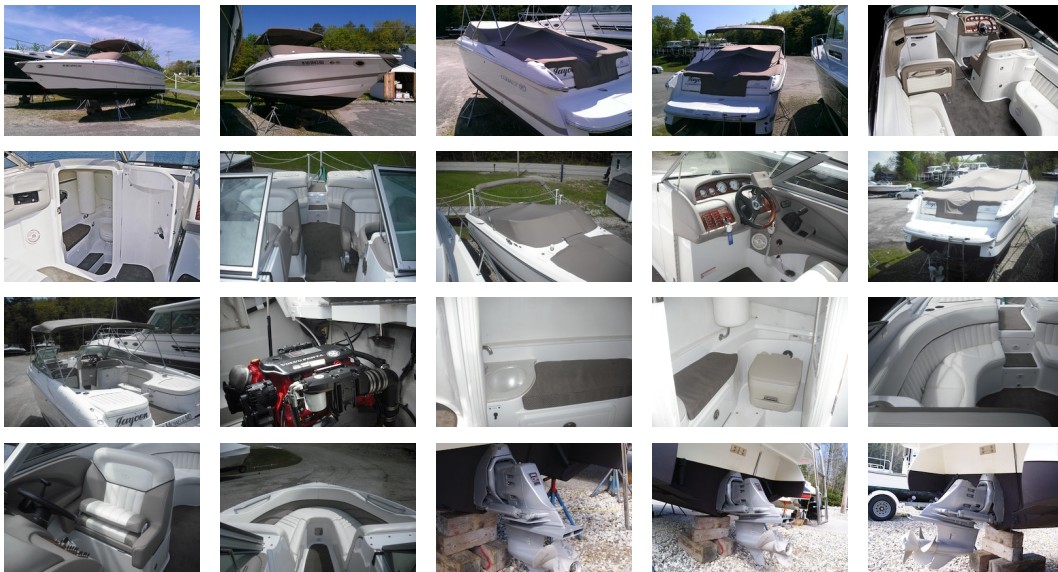
Holding Tank:

- tank(s)

ACCOMODATIONS

Total Heads:

1



DisclaimerThe Company offers the details of this vessel in good faith but cannot guarantee or warrant the accuracy of this information nor warrant the condition of the vessel. A buyer should instruct his agents, or his surveyors, to investigate such details as the buyer desires validated. This vessel is offered subject to prior sale, price change, or withdrawal without notice.

Manufacturer Provided DescriptionA bowrider at the top end of the runabout class, the 282 handles with all the agility and responsiveness of a smaller craft, but it insists upon much of the size and spaciousness of a cruiser. Function complements style; entertainment centers stand next to massive storage; Kevlar meets stainless steel, and a Cobalt settles in for the night. Look, and discover structural heft, all the details of fit and finish that have defined Cobalt boats since 1968, a built-in sense of fun, and room, Kansas kinds of room for family and friends and, when all is said and done, room to think. The raw materials of the ideal are here: meaningful power options, aircraft-like instrumentation, wood trim highlighting the dash, chest-pounding stereo packages, walk-thru doors at the bow and filler carpet at the aft walk-thru, a super-comfortable and double-wide helm seat, a convenient and highly serviceable galley unit, a pump-out porta potti, wraparound lounge seating, and an ice chest for crisp hors d' oeuvres all around.

Additional DescriptionDry weight with big block engine is 7790 lbs.

