

## 2011 Sea Ray 280 Sundeck **\$55,000**



A very well cared for example of the popular Sea Ray 280 Sundeck. Recently, she was professionally detailed and stored inside for the off season. Always maintained by a the local yard. Equipped with popular Sea Ray features such as;

- Flag Blue gel coat hull
- Raymarine MFD at helm
- Freshwater head
- Wetbar and solid countertop behind helm
- Full deck carpeting
- Fold out Bimini top
- Much more!

Kept in indoor heated storage area and easy to see at our office in Glen Cove, NY.

### BASIC INFORMATION

<b>Manufacturer:</b>	Sea Ray	<b>Model:</b>	280 Sundeck
<b>Year:</b>	2011	<b>Category:</b>	Power
<b>Condition:</b>	Used	<b>Location:</b>	Glen Cove, US
<b>Hull Material:</b>	Fiberglass		

### DIMENSIONS & WEIGHT

<b>Length:</b>	28.08 ft	<b>Beam:</b>	8.83 ft
<b>Draft - max:</b>	3.5 ft	<b>Dry Weight:</b>	5,726 lb

### ENGINE

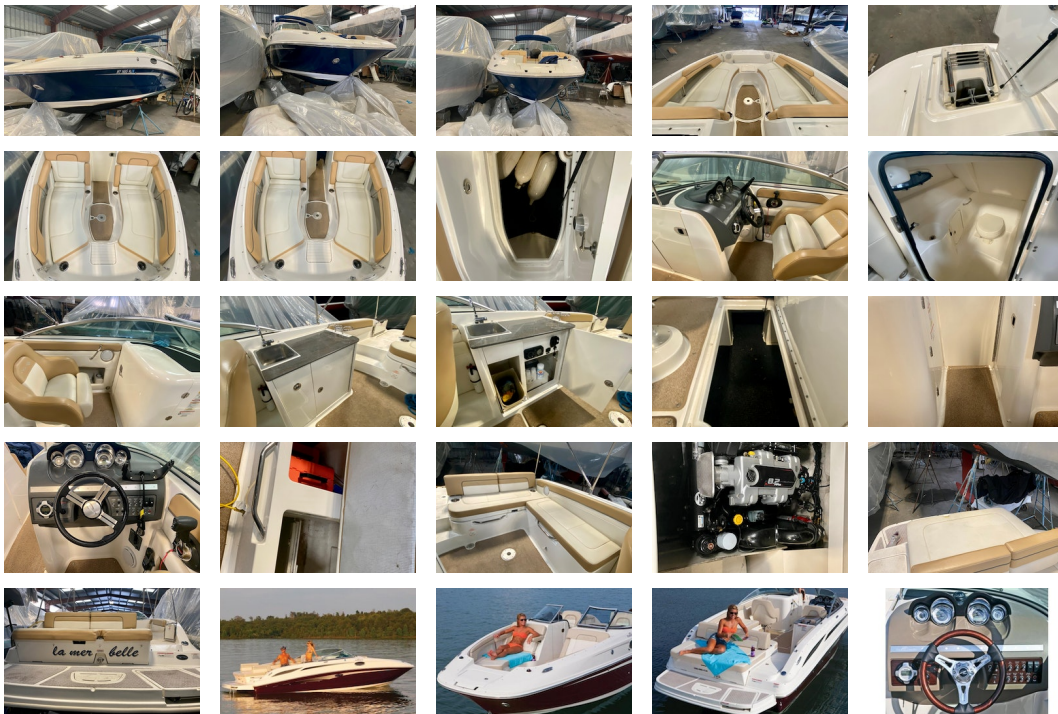
**Model:** 350 Magnum Bravo III **Engine(s):** 1  
**Drive Type:** Stern **Fuel Type:** unleaded  
**Horsepower:** 300 horsepower

## TANK CAPACITIES

**Fuel Tank:** 85 gallon - 1 tank(s) **Fresh Water Tank:** 20 gallon - 1 tank(s)  
**Holding Tank:** 10 gallon - 1 tank(s)

## ACCOMODATIONS

**Total Heads:** 1



**Manufacturer Provided Description** The 280 Sundeck is another amazing example of progressive product engineering in action. This boat strikes a perfect balance between function, style, and innovation with its abundant seating, sporty good looks, and voluminous storage.

### Key Features

- MerCruiser 350 MAG ECT w/Bravo III and Digital Throttle and Shift
- Blue two-tone gel-coat finish with Sundeck graphics.
- Two large storage lockers in cockpit sole, and transom access ski/wakeboard storage.
- L-shaped cockpit lounge that converts to four different configurations including extended sun pad.
- Solid-surface cockpit entertainment center with sink and faucet.
- Sony 12V AM/FM CD player with digital display remote and iPod connector.
- SmartCraft diagnostics system standard.
- Sunbrella bimini top standard.
- Forward boarding ladder in concealed anchor hatch.
- Large head compartment with vanity, sink, and portable head standard.

- Extended swim platform with non-slip rubber inserts and concealed ladder.

**Disclaimer**The Company offers the details of this vessel in good faith but cannot guarantee or warrant the accuracy of this information nor warrant the condition of the vessel. A buyer should instruct his agents, or his surveyors, to investigate such details as the buyer desires validated. This vessel is offered subject to prior sale, price change, or withdrawal without notice.

PRESENTED BY

**ANDREW COUSINS**

CELL 781-502-1580

OFFICE 516-623-6256 x405

[andrew@dimillos.com](mailto:andrew@dimillos.com)

