

## 2004 Mainship Pilot 34 Express **\$179,000**



On display at the Newport Spring Boat Show - May 16, 17, 18

2004 Mainship Pilot 34 Express is powered by the popular Yanmar 370hp single diesel, and exceptionally clean. She has low hours, under 390, and her maintenance schedule exceeds manufacturer's recommendations. She also offers a nice list of factory options as well as after-market upgrades. From the hull that shines as new to the bimini top that was cleaned and stored professionally every year, this Pilot 34 will not disappoint. Please contact our sales office for further information.

Trades ok!

### BASIC INFORMATION

<b>Manufacturer:</b>	Mainship	<b>Model:</b>	Pilot 34 Express
<b>Year:</b>	2004	<b>Category:</b>	Power
<b>Condition:</b>	Used	<b>Location:</b>	Portland, US
<b>Vessel Name:</b>	2004 Mainship Pilot 34 Express	<b>Hull Material:</b>	Fiberglass
		<b>Designer:</b>	Mainship Design Team

### DIMENSIONS & WEIGHT

<b>Length:</b>	34 ft	<b>Beam:</b>	12.25 ft
<b>Draft - max:</b>	3.25 ft		

### ENGINE

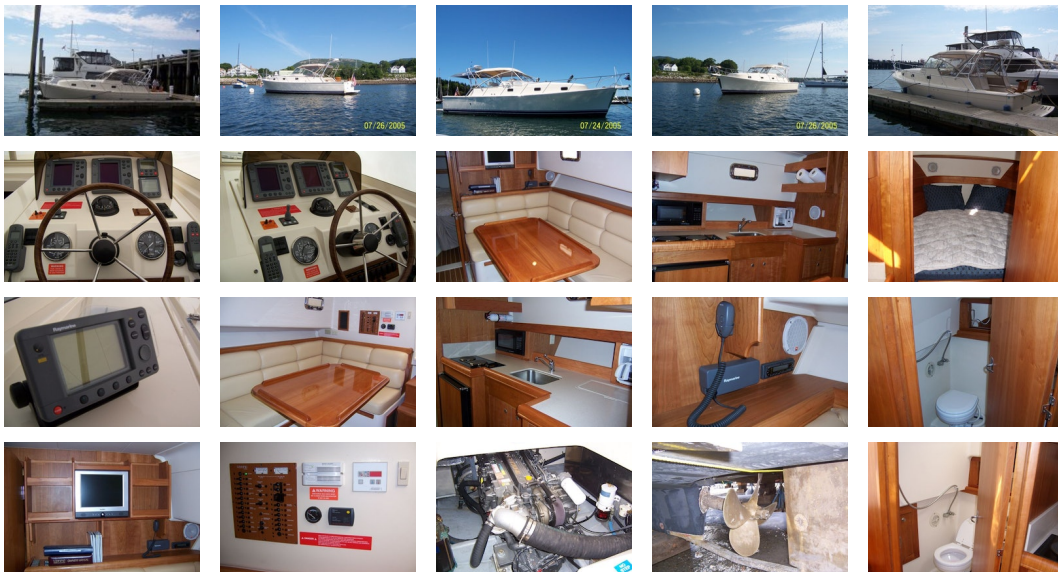
<b>Make:</b>	Single 370 Yanmar	<b>Model:</b>	6LYA-STP
--------------	-------------------	---------------	----------

<b>Engine(s):</b>	1	<b>Hours:</b>	375
<b>Cruise Speed:</b>	17 kn	<b>Fuel Type:</b>	diesel
<b>Max Speed:</b>	19 kn		

## TANK CAPACITIES

<b>Fuel Tank:</b>	250 gallon - 1 tank(s)	<b>Fresh Water Tank:</b>	70 gallon - 1 tank(s)
<b>Holding Tank:</b>	20 gallon - 1 tank(s)		

## ACCOMMODATIONS



**Dimensions** Displacement: 15,000

**Engines** Total Power: 370

### Accommodations

- Cherry interior
- Cabin with convertible U shaped dinette with storage below
- 15" flatscreen tv with stereo CD & DVD player
- Storage shelves
- Interior lighting
- Everwear laminate teak and holly soles
- (2) Overhead hatches w/screens
- (6) Opening, screened stainless hatches portlights
- FWD cabin V berth with filler
- Cedar lined hanging locker
- Storage under berth
- Reading and overhead lights

### Galley/Head

- Above and below counter storage
- Corian counters
- Countertop storage binds
- Designer faucet
- Microwave oven

- Oversized galley sink
- AC/DC refrigerator
- Two burner electric range
- Wine and liquor bottle storage
- Built-in vanity w/corrian counter
- Electric toilet w/holding tank and overboard macerator pump/discharge
- Mirror
- Molded fiberglass head compartment
- Power ventilator
- Shower hot and cold
- Waste tank monitor

### **Electronics**

- (2) Raymarine RL70C Plus LCD displays
- Raymarine 4 kW Radar
- Raynav 300 GPS Plotter at Mates Seat
- Ray 230VHF (cabin)
- Ray 215 full functioning 2nd station at helm with Speaker
- Upgraded VHF Antenna
- ST6001 Autopilot
- ST600 R Remote Control
- Gyro Sensor
- ST60 Tridata

### **Electrical**

- 3.5 kW Next Generation Generator with sound shield enclosure
- 120V Shore Power with inlet and 30A 50' shore cord
- 12V 8D Battery for house and start
- 12V G24 Battery for generator
- 120VAC/12VDC distribution panel
- On/Off battery switches

### **Hull and Deck**

- Deck, Bridge, and Cockpit
- Anchor Locker
- Bow Rail – Custom 316L Stainless Steel
- Bridge Seating for Six w/Storage Underneath
- Cleats – Bow, Stern and Spring
- Cockpit Storage
- Engine Instrumentation – Tachometer, Voltmeter, Oil Pressure and Temperature Gauges
- Fiberglass Anchor Pulpit with Roller
- High Density Rub Rail w/Stainless Steel Insert
- Insulated Ready Box/Cooler
- Safety Rails – Stainless Steel
- Sliding Companionway Door
- Venting Windshield w/Wipers

### **Additional Equipment**

- Air conditioning with reverse cycle heat
- Bow thruster
- Bow thruster touchpad replaced with joystick controller
- Custom dual stage generator muffler
- SoundDown bridge deck and cockpit carpet
- Water tank monitor
- Red LED Lighting on Bridge
- Custom Sunbrella helm cover
- Evolution Shaft Razor Line Cutter
- AFI Dual Trimpet Air Horn
- Fogmate Automated horn control system
- Additional 12V Outlet and intermittent port wiper switch at mates station
- Carbon filter on head vent
- Edson Powerknob
- Tufted topper mattress pad
- Bronze Strut and Rudder(s)
- Engine Alarm System
- Fire Extinguisher System
- Freshwater Cooling on Engine
- Fuel Filter
- Full Keel and Sand Shoe w/Full Prop Protection

- Hot and Cold Pressurized Water
- Hydraulic Steering
- Sea Strainer
- Seacocks on Underwater Thru-Hull Fittings
- Stainless Steel Shaft – Aquamet
- Trim Tabs
- Welded Aluminum Fuel Tank
- Compass
- Courtesy Lights – Red LED Cockpit and Bridge Deck
- Dockside Water Connection

**Comments** Growler is an excellent example of the Pilot 34 Express Rum Runner, equipped and maintained to the hilt. The two-time Mainship owner have already moved up to a larger boat. If you are in the market for a Mainship Pilot 34, look no further than Growler.

**Disclaimer** The Company offers the details of this vessel in good faith but cannot guarantee or warrant the accuracy of this information nor warrant the condition of the vessel. A buyer should instruct his agents, or his surveyors, to investigate such details as the buyer desires validated. This vessel is offered subject to prior sale, price change, or withdrawal without notice.

PRESENTED BY

**PETER OUELLETTE**

CELL 207-318-0626

OFFICE 207-773-7632 x285

[peter@dimillos.com](mailto:peter@dimillos.com)

