

1987 Wilbur Downeast Flybridge **\$119,000**



Clean, nicely equipped classic. Varnish intact, nice paint, very clean and ready for a new owner. Unique boat with great local history. Under shrinkwrap but very easy to see in downtown Portland, Maine.

*****\$30,000 PRICE REDUCTION MARCH 25***** Slip for 2012 available at DiMillo's!

BASIC INFORMATION

Manufacturer:	Wilbur	Model:	Downeast Flybridge
Year:	1987	Category:	Power
Condition:	Used	Location:	Portland, US
Hull Material:	Fiberglass		

DIMENSIONS & WEIGHT

Length:	38 ft	Beam:	12.75 ft
Draft - max:	4 ft		

ENGINE

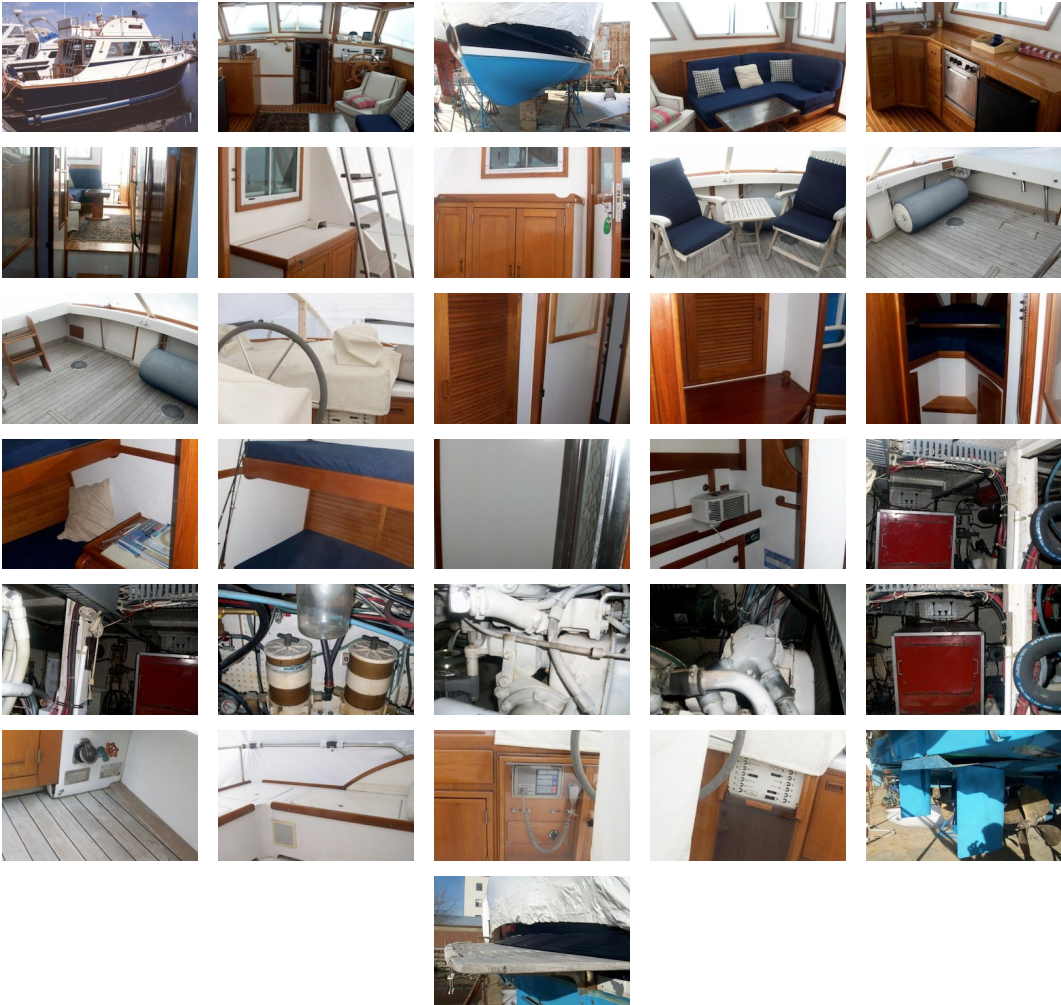
Make:	Caterpillar	Model:	3208TA
Engine(s):	2	Hours:	2900
Cruise Speed:	16 kn	Engine Type:	Inboard
Drive Type:	Direct	Fuel Type:	diesel
Horsepower:	375 horsepower	Max Speed:	20.3 kn

TANK CAPACITIES

Fuel Tank:	123 gallon - 4 tank(s)	Fresh Water Tank:	50 gallon - 2 tank(s)
Holding Tank:	15 gallon - 1 tank(s)		

ACCOMODATIONS

Total Cabins:	2	Total Berths:	2
Total Heads:	1		



Additional Equipment

Engine sync
Anchor windlass
Fuel and water guage
LPG Solenoid
Macerator Pump
Oil Change Pump
Saltwater pump
Windshield wipers
FRP Rudders

3 Fire Extinguishers

Danforth 22S Anchor

Bruce 33# Anchor

Some 3/8 chain

Nylon Rode

Life Ring

PFD Pack

Machinery/Propulsion

Engine Synchronizers

1 3/4" Aquamet Shafts

Twin Disc MG507 Transmissions

26x23 Props

Electrical

12V DC System

4 12V Batteries

Belt Driven Alternator

120V 30A two phase dockside electrical

8 kw Westerbeke Genset

Lewco 40 A Battery Charger

Hull and Deck

Vanished Teak Bow Pulpit with Anchor Roller

Stainless Steel Bow Rail

Flybridge Bimini with Full Enclosure

Transom mounted swimplatform

Edson Dinghy Brackets

Teak Flybridge Chair with Cushions

Electronics

Flybridge

Ritchie Powerdamp Magnetic Compass

Garmin 210 GPS Plotter

Northstart 800 Loran C

Datamarine Depth

Datamarine Speed

Simrad AP22 Autopilot
Cetec Benmar FMS 300 Fuel Management
Bennett Trim Tabs and Bar Gauges
Raytheon 410 Loud Hailer
Lower Station
Ritchie Powerdamp Compass
Furuno Radar
Simrad AP22 Autopilot
Datamarine Depth
Daramarine Speed
ICOM IC M100 Marine VHF Transciever
Sony CD Stereo
Northstar GPS/Loran 800

Accommodations

Entering the boat from the swimplatform and the transom door, you arrive in a large cockpit with bhlhead mounted storage cabinets, both with high glass teak doors and trim. The salon door enters into an open layout with galley up to port and settee and chair to starboard. Forward on starboard is the lower helm with the AC/DC panel just forward down the companion way. Also down the companionway you will find a head with separate shower, guest cabin with over under bunks and a master with v berth, filler and plenty of hanging lockers and drawer storage. The engine room is accessed through the salon sole. The flybridge is accsed from a ladder in the cockpit which leads up to a captains chair, L settee to port and straight bench to starboard.

DisclaimerThe Company offers the details of this vessel in good faith but cannot guarantee or warrant the accuracy of this information nor warrant the condition of the vessel. A buyer should instruct his agents, or his surveyors, to investigate such details as the buyer desires validated. This vessel is offered subject to prior sale, price change, or withdrawal without notice.

PRESENTED BY

CHRISTOPHER DIMILLO

CELL 207-671-3292

OFFICE 207-773-7632 x249

chris@dimillos.com

