

1985 Post 43 Sport Fisherman \$239,900



This impeccable 43' Post has been lovingly cared for by a father then his son, both knowledgeable boatowners, for the past 10 years. Their efforts show in its shining gelcoat, flawless brightwork, spotless interior and extensive equipment list. The cockpit is expansive and features beautiful teak covering boards, transom door and custom teak swimplatform. Although it has a Lee fighting chair, Rupp Outriggers and tackle center, Reel Love has never been fished. The salon is very roomy with an open mid-level galley, single head and two staterooms. The centerline queen in the master leaves adequate room for mobility and ample storage, as well as a roomy head with stall shower. The entire interior is finished in teak. All this plus only 1700 original hours, oil changes every 50 hours and a Northstar 961 Chartplotter! If you are looking for a solid convertible style boat in excellent condition, look no further. The boat is in the water and ready for your sea-trial. We are located just minutes from the Portland Airport and 90 minutes north of Logan in Boston. Call us for a personal showing! New Price 5/5/02, and OWNER IS ACCEPTING OFFERS!

BASIC INFORMATION

Manufacturer:	Post	Model:	43 Sport Fisherman
Year:	1985	Category:	Power
Condition:	Used	Location:	Portland, US
Vessel Name:	Reel Love	Hull Material:	Fiberglass
Designer:	W. Nickerson		

DIMENSIONS & WEIGHT

Length:	43 ft	Beam:	15.75 ft
Draft - max:	3.5 ft	Bridge Clearance:	13.58 ft

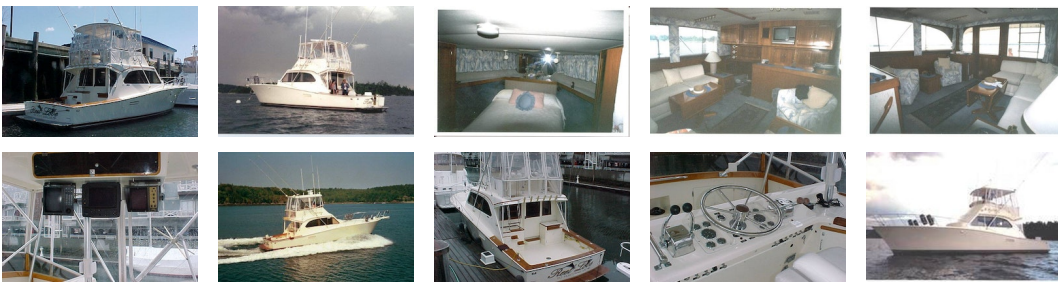
ENGINE

Make:	Twin Detroit Diesels	Model:	671 TI
Engine(s):	2	Hours:	1772
Cruise Speed:	22 kn	Fuel Type:	diesel
Max Speed:	25 kn		

TANK CAPACITIES

Fuel Tank:	- tank(s)	Fresh Water Tank:	- tank(s)
Holding Tank:	- tank(s)		

ACCOMODATIONS



Dimensions Displacement: 33000#

Engines Total Power: 450 hp

Tanks Fuel: 500 Fresh Water: 120

Accommodations

- "L" Shaped Sofa (with pull out double)
- Two Barrel Chairs
- Wet-bar with icemaker and liquor dispenser
- Entertainment center with TV/VCR, CD & Cassette Player
- Teak Cabinetry
- Valance and Overhead Lighting
- Teak Hi-Lo Table
- Teak End Table

Galley/Head

- HEAD
- Atlantes Electric Toilet
- Lectra-san Type II MSD treatment system
- Separate stall shower
- Ample storage
- Teak Parquet Flooring
- GALLEY
- Full Size Whirlpool Refrigerator with Ice Maker
- Insta-Hot Hot water
- Microwave Oven
- Princess 4 Burner Stove and Oven
- Parquet Flooring

Electronics

- Northstar 961 XD GPS and Chartplotter
- Furuno Radar
- Furuno Fishfinder
- Dual ICOM VHF Radios
- Datamarine Depth
- Datamarine Speed
- Cetrek Autopilot
- Standard Horizon Hailer/Intercom with Remote in Salon (DSC Capable)

Electrical

- 8.0 kW Onan Generator
- 50A/250V Shorepower System with 50' 50A Shorepower Cord
- 12V DC Electrical System
- 3 8D Batteries

Hull/Deck

- FLYBRIDGE
- Captain's and Mates helm chairs
- Two bench seats with storage.
- Factory Hardtop
- Full Enclosure
- COCKPIT
- Tackle Center/Wet Sink
- Lee Fighting Chair in new Condition
- Rupp Outriggers
- Remote Engine Guages
- Fresh Water Washdown
- Salt Water Washdown
- Dockside Water, Telephone, CATV hookups
- (2) 50A dockside connections

Engines and Machinery Space

- Block Heaters
- Air Seps
- Halon System
- Automatic Oil Changer for Engines and Generator
- Engine Room Lights
- Hi Pressure Water System
- Hot Water Heater

Additional Equipment

- Central Vacuum
- Cruisair Reverse Cycle Air Conditioning and Heat
- Electric Heater
- (2) Spare Propellers
- Glendenning Synchronizer
- Ideal Anchor Windlass
- Fuel Tank Transfer Pump
- Parallel Switch

Broker's Comments Reel Love is an excellent example of a Post 43. Professionally done brightwork, oil changes every 50 hours and a spotless interior make this a must see. Anyone looking for a cruising sportfish should inspect her. You will not be disappointed.

