

## 2000 Formula Bow Rider \$39,500



Nice boat, with low hours, and a ton of space for friends and Family. Twin 5.7L Mercruisers with Bravo 3 drives, Wet Bar, Two sunpads, Northstar Gps, Icom Vhf radio, tons of lines and fenders and safety gear, Mooring cover, full Bimini with camper Canvas.

### BASIC INFORMATION

<b>Manufacturer:</b>	Formula	<b>Model:</b>	Bow Rider
<b>Year:</b>	2000	<b>Category:</b>	Power
<b>Condition:</b>	Used	<b>Location:</b>	Freeport, US
<b>Vessel Name:</b>	Don Quixote	<b>Hull Material:</b>	Fiberglass

### DIMENSIONS & WEIGHT

<b>Length:</b>	28 ft	<b>Draft - max:</b>	2 ft
----------------	-------	---------------------	------

### ENGINE

<b>Make:</b>	Mercruiser	<b>Model:</b>	T-350 5.7L Mag MPI
<b>Engine(s):</b>	2	<b>Hours:</b>	144
<b>Fuel Type:</b>	unleaded		

### TANK CAPACITIES

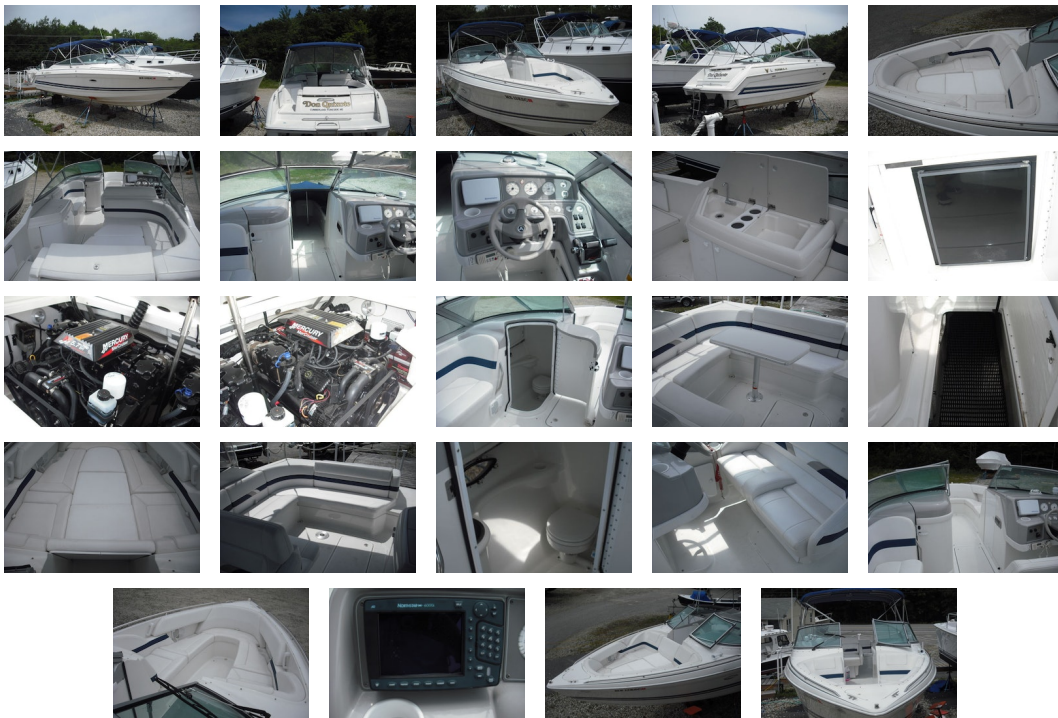
<b>Fuel Tank:</b>	- tank(s)	<b>Fresh Water Tank:</b>	- tank(s)
-------------------	-----------	--------------------------	-----------

**Holding Tank:**

- tank(s)

## ACCOMODATIONS

---



**Dimensions** Beam: 9'2" Displacement: 6300

**Engines** Total Power: 300 Cruising Speed: 35 Max Speed: 50

**Tanks** Fuel: 120 Fresh Water: 20 Holding: 5

### Accommodations

- Kenwood AM/FM CD Sound System
- Bennett Trim Tabs
- Dockside Power
- Battery Charger
- Transom Shower
- Private Head Compartment w/sink
- Holding Tank
- Filler bow Cushions
- Filler u-sette cushions
- 10 Cup holders
- Icom VHF Radio
- Richie compass
- Windshild Wiper
- Micron CSC white Bottom paint
- Northstar GPS
- Cockpit Carpet
- Bimini Top
- 2 Cockpit Tables
- Cockpit Wet Bar
- Cockpit AC/DC Fridge
- Full storage Cover Swim Ladder

**Disclaimer** The Company offers the details of this vessel in good faith but cannot guarantee or warrant the accuracy of this information nor warrant the condition of the vessel. A buyer should instruct his agents, or his surveyors, to investigate such details as

the buyer desires validated. This vessel is offered subject to prior sale, price change, or withdrawal without notice.

