

2003 Mainship Pilot 34 Sedan **\$169,000**



Price Reduced September 2008 Pamela Gail is an extremely clean and well-kept example of a 2003 Mainship Pilot 34 Sedan. She comes equipped with the twin 240hp Yanmars that will cruise her at 20 knots, Raymarine chart/radar GPS, Raymarine ST60, air conditioning, generator and much more. The 34' Pilot Sedan provides everything that one would look for in a boat: a spacious cockpit and deck with plenty of seating, a roomy interior with accommodations that can compare to a larger boat, and pure comfort when cruising from destination to destination. She handles nicely and with her twin engines, maneuverability in tight spaces will be a breeze. With only 250 hours on the engines, she certainly presents a great opportunity for her next owners. Contact our office today for more details.

BASIC INFORMATION

Manufacturer:	Mainship	Model:	Pilot 34 Sedan
Year:	2003	Category:	Power
Condition:	Used	Location:	Freeport, US
Vessel Name:	Pamala Gail	Hull Material:	Fiberglass
Designer:	Mainship Corp.		

DIMENSIONS & WEIGHT

Length:	34 ft	Beam:	12.25 ft
Draft - max:	3.25 ft	Bridge Clearance:	9 ft

ENGINE

Make:	Twin Yanmar	Model:	4LHA-STP
Engine(s):	2	Hours:	250

Cruise Speed: 20 kn **Fuel Type:** diesel

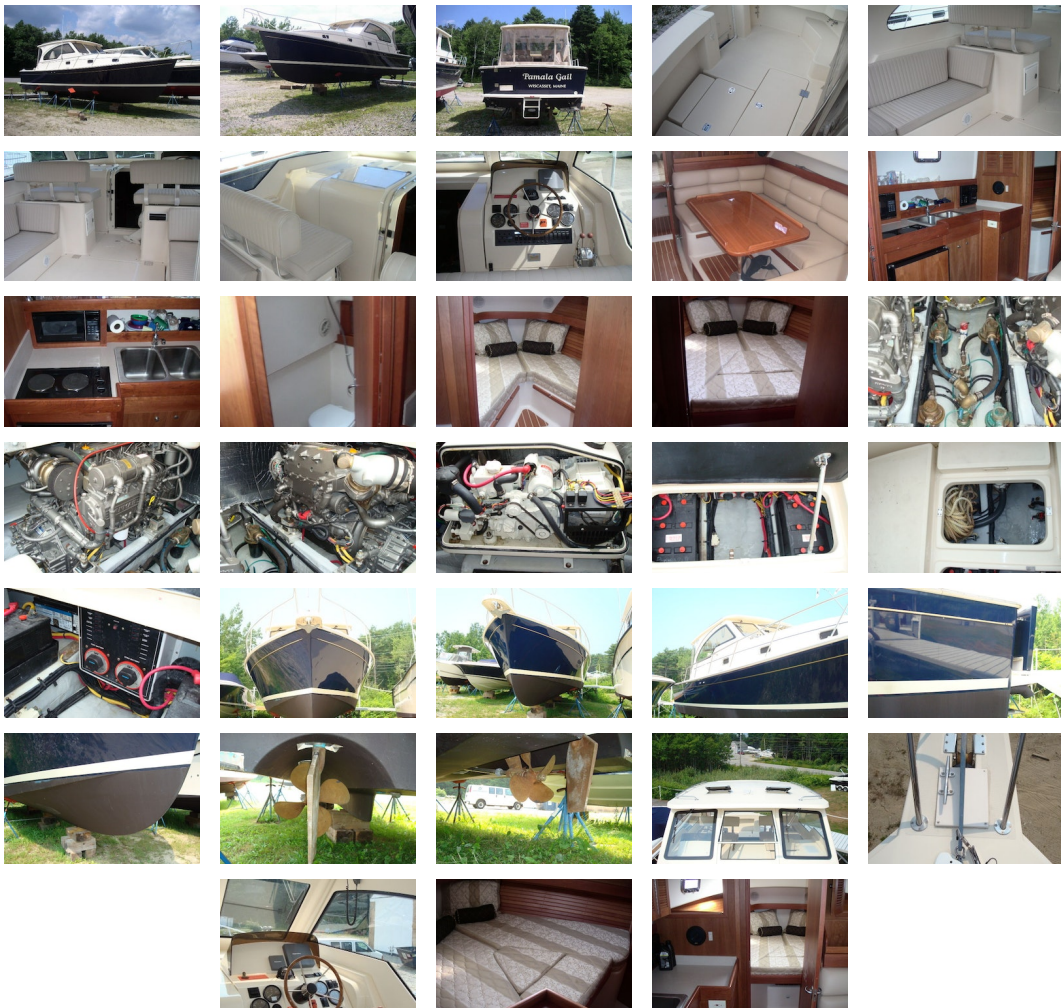
Max Speed: 23 kn

TANK CAPACITIES

Fuel Tank: 250 gallon - 1 tank(s) **Fresh Water Tank:** 70 gallon - 1 tank(s)

Holding Tank: 20 gallon - 1 tank(s)

ACCOMODATIONS



Dimensions Displacement: 15,000

Engines Total Power: 240

Accommodations

- Salon
- Cherry Interior
- Convertible Dinette to Double Berth
- Everwear Laminated Teak and Holly Flooring
- Interior Lighting
- Opening Stainless Steel Hatches w/Screens (2)

- Opening, Screened Stainless Steel Portlights (6)
- Am/ Fm Stereo, CD Player
- Forward Cabin
- Cedar-Lined Hanging Lockers (2)
- High-Intensity Reading Lights (2)
- Opening Stainless Steel Hatch w/Screen
- Storage Under Berths
- V-Berth w/Filler to Double Sleeper

Galley/Head

- Galley
- Above and Below Counter Storage
- Corian Counters
- Countertop Storage Bins
- Designer Faucet
- Microwave Oven
- Oversized Galley Sink
- Refrigerator/Freezer (AC/DC)
- Two Burner Electric Range
- Water Tank Monitor
- Wine & Liquor Bottle Storage
- Head
- Built-In Vanity w/Corian Counter
- Electric Toilet w/Holding Tank
- Mirror
- Molded Fiberglass Head – Durable, Easy to Clean
- Power Ventilator
- Shower – Hot & Cold
- Shower Sump Pump
- Waste Tank Monitor

Electronics

- Raymarine RL70C color radar/chartplotter
- 2kW radome scanner
- Ray 215 VHF
- 8ft. VHF antenna
- Raymarine ST60 Tri-data

Electrical

- Battery charger
- Battery Safety Switch
- Bonding System w/Zinc Anode
- Circuit Breakers (AC/DC)
- Color-Coded Wiring Harnesses
- Electric Bilge Pumps w/Auto Switch(3)
- Electrical Distribution Panel
- GFCI Protection Throughout
- High Water Alarm w/4000 gph Emergency Bilge Pump
- Interior Lights – 12 V
- Macerator w/Overboard Discharge
- Reverse Polarity Indicator
- TV/Telephone Dockside Connection
- Water Heater
- Water Tank Monitor
- 50 Foot, 30 Amp Shore Power Cord
- 3.5 kw Generator

Hull and Deck

- Dark Blue Fiberglass Hull
- Anchor Locker
- Bow Rail – Custom 316L Stainless Steel
- Bridge Seating for Six w/Storage Underneath
- Cleats – Bow, Stern and Spring
- Cockpit Storage
- Courtesy Lights – Cockpit and Bridge Deck
- Dockside Water Connection
- Engine Hour Meter
- Engine Instrumentation – Tachometer, Voltmeter, Oil Pressure and Temperature Gauges
- Fiberglass Anchor Pulpit with Roller

- High Density Rub Rail w/Stainless Steel Insert
- Insulated Ready Box/Cooler
- Safety Rails – Stainless Steel
- Sliding Companionway Door
- Venting Windshield w/ Wipers

Mechanical

- Bronze Struts and Rudders
- Engine Alarm System
- Fire Extinguisher System
- Freshwater Cooling on Engine
- Fuel Filter
- Hot and Cold Pressurized Water
- Hydraulic Steering
- Sea Strainer
- Seacocks on Underwater Thru-Hull Fittings
- Stainless Steel Shafts – Aquamet
- Dripless Shaft Logs
- Trim Tabs
- Welded Aluminum Fuel Tank

Disclaimer The Company offers the details of this vessel in good faith but cannot guarantee or warrant the accuracy of this information nor warrant the condition of the vessel. A buyer should instruct his agents, or his surveyors, to investigate such details as the buyer desires validated. This vessel is offered subject to prior sale, price change, or withdrawal without notice.

PRESENTED BY

CHRISTOPHER DIMILLO

CELL 207-671-3292

OFFICE 207-773-7632 x249

chris@dimillos.com

