

1996 Webbers Cove Downeast 29 **\$110,000**



Just Listed!

Donna Marie is available for sale for the very first time! This beautiful 29' Webbers cove designed by Spencer Lincoln was built by the original owner, the hull and deck were built by Webbers cove and shipped to Strout point boatyard in South Freeport Maine where she was finished. The owner wanted a Lobster boat to use as a day boat for friends and family but also for the occasional weekend over night trips.

- Just out of the paint shop 1/25/21, Fresh off white hull paint with a flag blue boot stripe.
- Repowered in 2013 with a Yanmar 6BY3 260 w/92hrs
- Espar diesel heater with helm and Cabin vents.
- Garmin Gps/ Chartplotter/ depth
- Simrad auto pilot
- Furuno radar
- Stored indoors and cared for by the crew at GIBY

BASIC INFORMATION

Manufacturer:	Webbers Cove	Model:	Downeast 29
Year:	1996	Category:	Power
Condition:	Used	Location:	Harpswell, US
Hull Material:	Fiberglass		

DIMENSIONS & WEIGHT

Length:	29 ft	Beam:	10.5 ft
Draft - max:	3 ft		

ENGINE

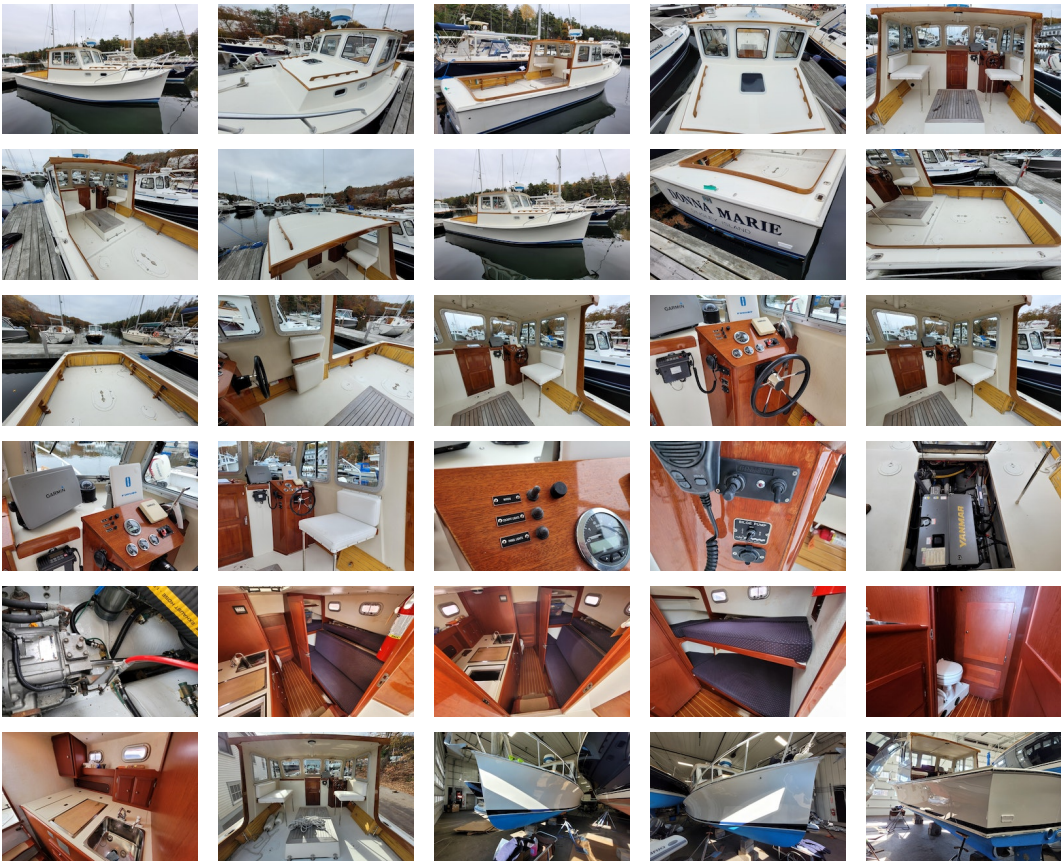
Make:	Yanmar	Model:	6BY3-260
Engine(s):	1	Hours:	92
Cruise Speed:	15 kn	Engine Type:	Inboard
Drive Type:	Direct	Fuel Type:	diesel
Horsepower:	260 horsepower	Max Speed:	20 kn

TANK CAPACITIES

Fuel Tank:	50 gallon - 2 tank(s)	Fresh Water Tank:	35 gallon - 2 tank(s)
Holding Tank:	20 gallon - 1 tank(s)		

ACCOMODATIONS

Total Berths:	2	Total Heads:	1
----------------------	---	---------------------	---



Electronics

- Garmin 4212 Gps/ Chartplotter/ Fishfinder
- Simrad Auto pilot
- Furuno Radar/ display
- 6" Ritchie compass
- Icom VHF
- Espar diesel heater helm/ Cabin
- Remote spot light

Helm

- Teak helm pod
- Single lever Throttle
- Electronics
- Yanmar digital Tach display hr meter 92hrs
- Ignition
- 2 wiper's & controls switches
- Open windshield
- Side opening window
- Helm & Mate seat/ fold down option
- Hydraulic steering
- Remote spot light control
- Windlass control
- Varnished Cabin Door
- Aft canvas for helm deck
- 12v accessory plug

Cabin

- **Galley to port**
- SS sink
- Propane cooktop/ w cutting board cover
- Ice box with overboard drain
- Storage cabinets
- shelves
- Plenty of Drawers and cabinets below the counter
- 2 port lights
- **Bunk Berths to Starboard**
- **Twin bunks with Navy blue sunbrella fabric**
- **12 volt panel**
- **2 port lights**
- **Battery switches**
- **Reading light**
- **Overhead bomar hatch**

Head

- Head Forward
- Electric pump toilet
- 2 large storage cabinets
- Head door
- Teak & Holly flooring

Engines

The boat was repowered in 2013 with a Yanmar 6BY3-260 with 92 hrs

Hull/Deck

- Solid Fiberglass hull
- Full keel
- Hand Laid
- Fiberglass Bulkheads
- Self Bailing deck
- 3 big waterproof deck Hatches
- Nonskid deck
- Propane storage in aft compartment
- Salt water washdown
- Fresh water washdown
- Aluminum bow rail
- Running and Navigation lights
- Rod storage under the gunwales
- Engine box finished with raw teak flooring
- Varnished exterior grab rails/ eyebrow, Helm trim, Gunwales trim
- SS swim ladder

Disclaimer The Company offers the details of this vessel in good faith but cannot guarantee or warrant the accuracy of this information nor warrant the condition of the vessel. A buyer should instruct his agents, or his surveyors, to investigate such details as the buyer desires validated. This vessel is offered subject to prior sale, price change, or withdrawal without notice.

PRESENTED BY

JIM MCAULIFFE

CELL 207-252-2737

OFFICE 207-865-0432 x300

jim@dimillos.com

